

Sanctuary at San Elijo Hills  
**JOANNA**



**Elevation A**

**Approx. square feet:** 3,200

**Stories:** 1

**Bedrooms:** 3 - 4

**Garage:** 2-car

**Plan Number:** S32J

Welcome home to the ranch-style Joanna plan. From its covered front porch to the massive great room to a luxurious kitchen with walk-in pantry, central island and breakfast nook, this beautiful new home was designed with your livability in mind. It also offers a formal dining room, a spacious den that can be optioned as an extra bedroom and a relaxing master suite with two walk-in closets.

**Available elevations:**



**Elevation A**



**Elevation B**



**Elevation E**



**Elevation F**

**COMMUNITY LOCATION**

1212 Lexi Court  
San Elijo, CA 92078  
800-852-9714

**HOME GALLERY**

5171 California Avenue, Suite 120  
Irvine, CA 92617  
800-852-9714

**COMMUNITY LOCATION**

1212 Lexi Court  
San Elijo, CA 92078  
800-852-9714

**HOME GALLERY**

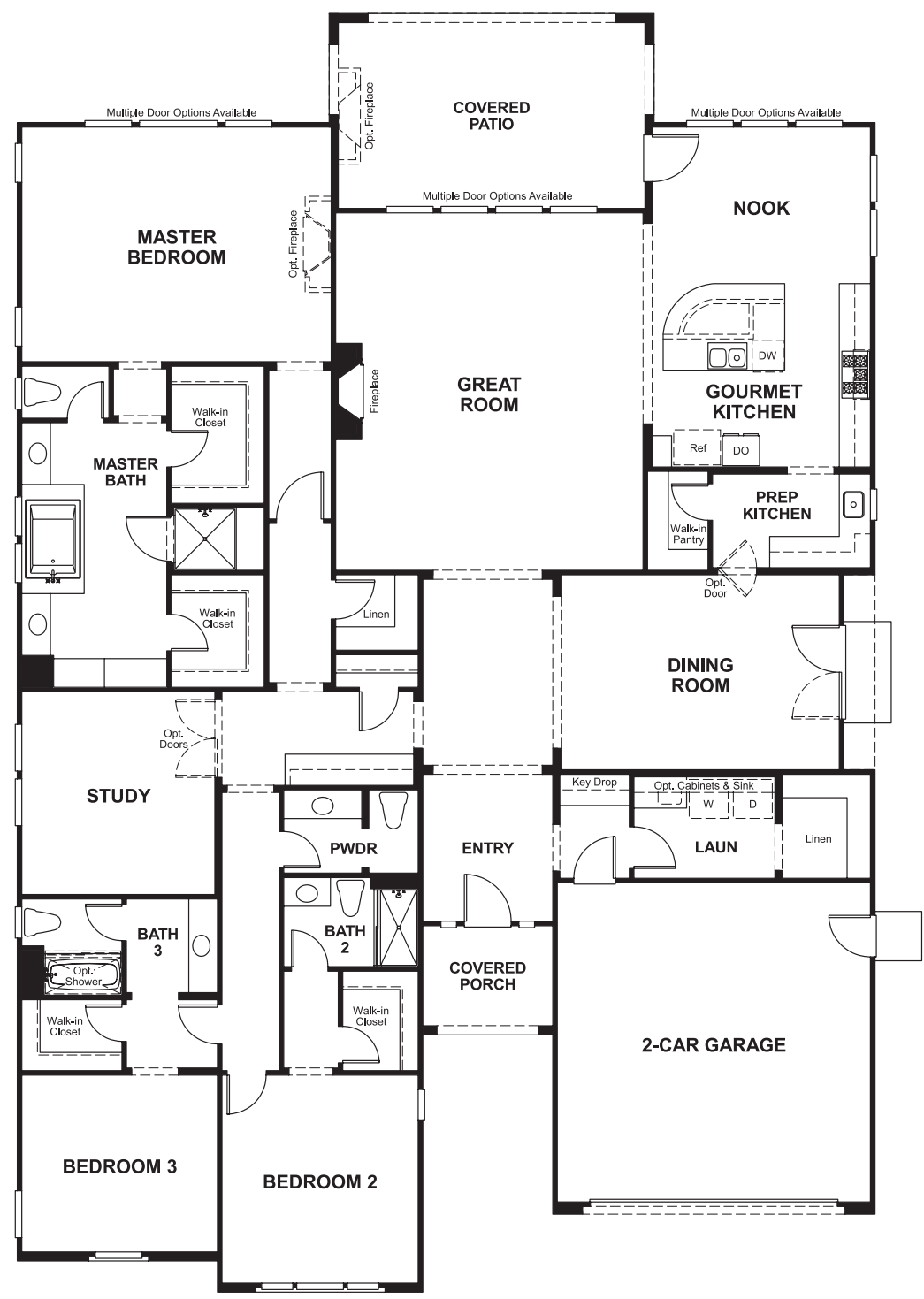
5171 California Avenue, Suite 120  
Irvine, CA 92617  
800-852-9714

Sanctuary at San Elijo Hills  
**JOANNA**

**Approx. square feet:** 3,200  
**Stories:** 1  
**Bedrooms:** 3 - 4

**Garage:** 2-car  
**Plan Number:** S32J

**Floor Plan**  
First Floor



**Floor Plan**  
First Floor Options

