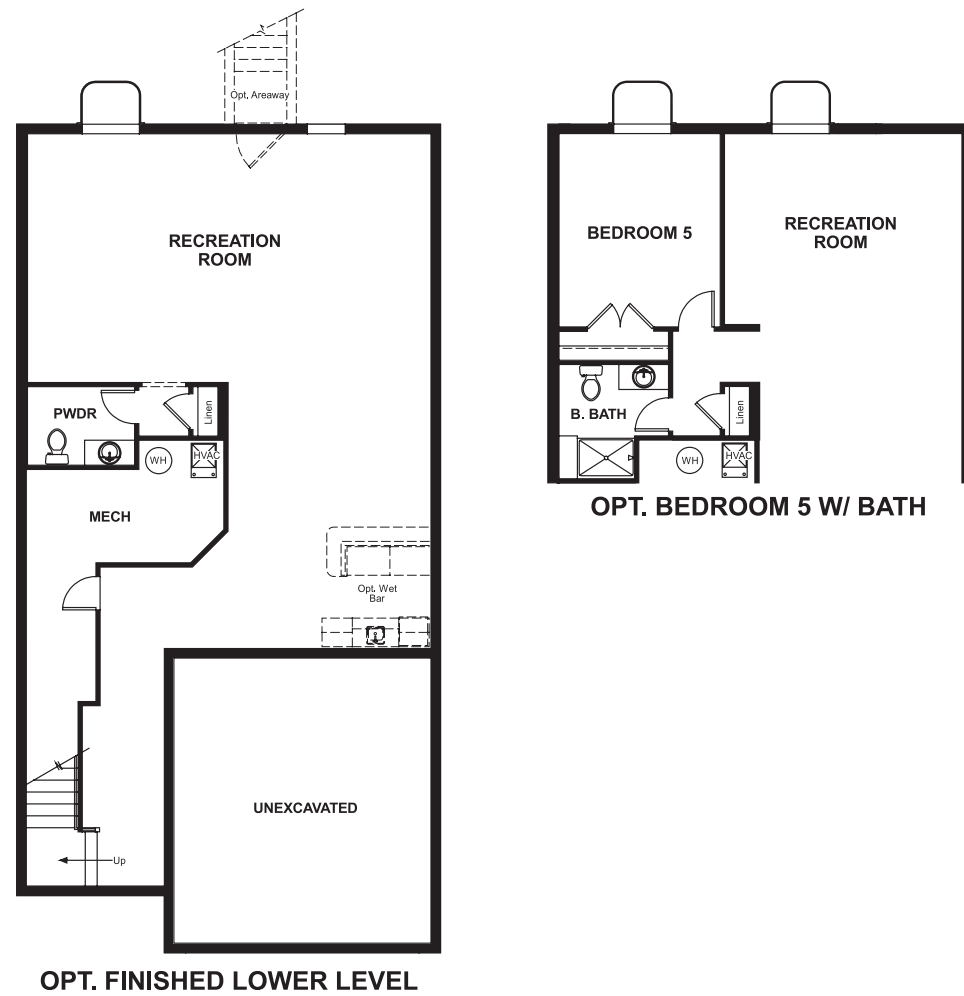


Tanyard Cove  
**KALEB**

**Approx. square feet:** 2,450  
**Stories:** 2  
**Bedrooms:** 3 - 5

**Garage:** 2-car  
**Plan Number:** M628

**Floor Plan**  
Lower Floor



Tanyard Cove  
**KALEB**

**Approx. square feet:** 2,450  
**Stories:** 2  
**Bedrooms:** 3 - 5  
**Garage:** 2-car  
**Plan Number:** M628



Elevation B, C, D, A

The Kaleb plan greets guests with a grand two-story entry and continues to impress with a spacious great room, an open dining room and a well-appointed kitchen with an island and optional gourmet features. The main floor also includes a lavish master suite and a powder room. Upstairs, enjoy a loft and two bedrooms with walk-in closets. Personalize this plan with an optional second master suite, fourth bedroom and a finished basement with a wet bar.

**Available elevations:**



Elevation B, C, D, A

**COMMUNITY LOCATION**  
302 Daleview Drive  
Glen Burnie, MD 21060  
410-424-0822

**HOME GALLERY**  
6210 Old Dobbin Lane, Suite 190  
Columbia, MD 21045  
888-791-8330



**COMMUNITY LOCATION**  
302 Daleview Drive  
Glen Burnie, MD 21060  
410-424-0822

**HOME GALLERY**  
6210 Old Dobbin Lane, Suite 190  
Columbia, MD 21045  
888-791-8330

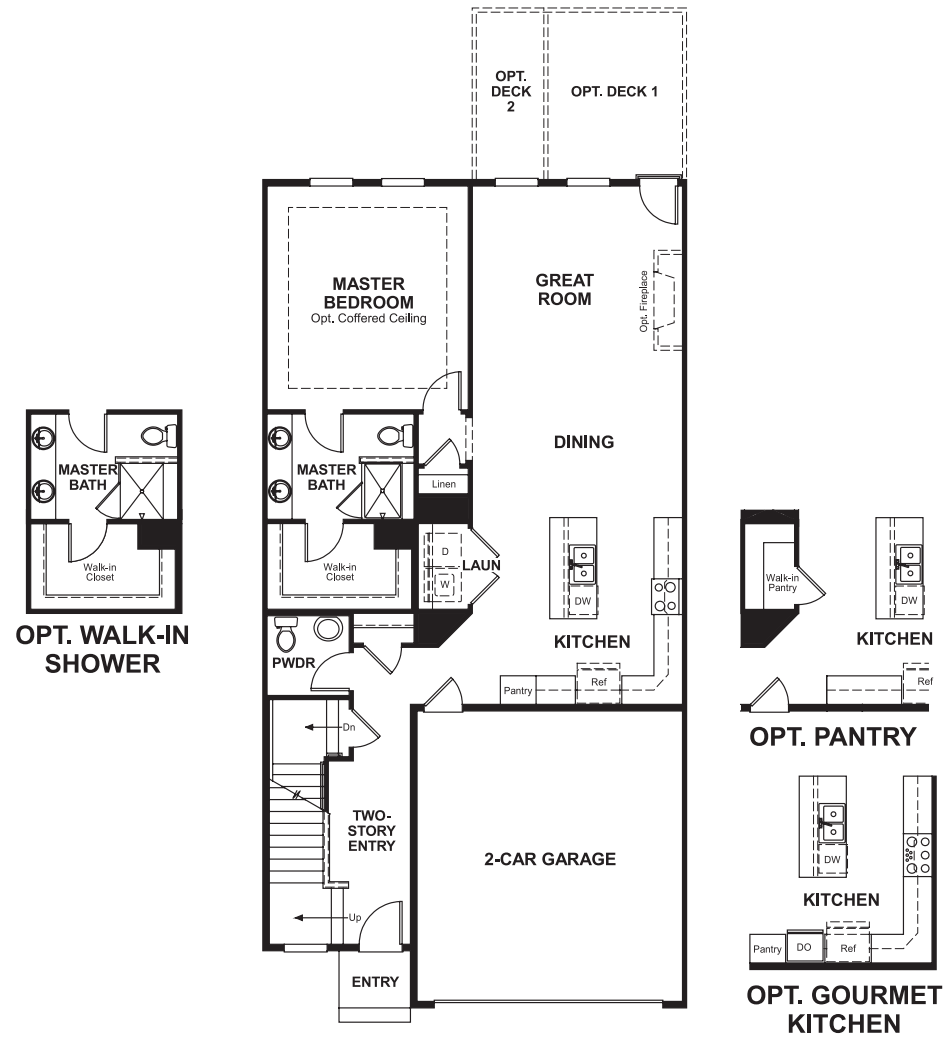


Tanyard Cove  
**KALEB**

**Approx. square feet:** 2,450  
**Stories:** 2  
**Bedrooms:** 3 - 5

**Garage:** 2-car  
**Plan Number:** M628

**Floor Plan**  
Main Floor



**Floor Plan**  
Second Floor

