

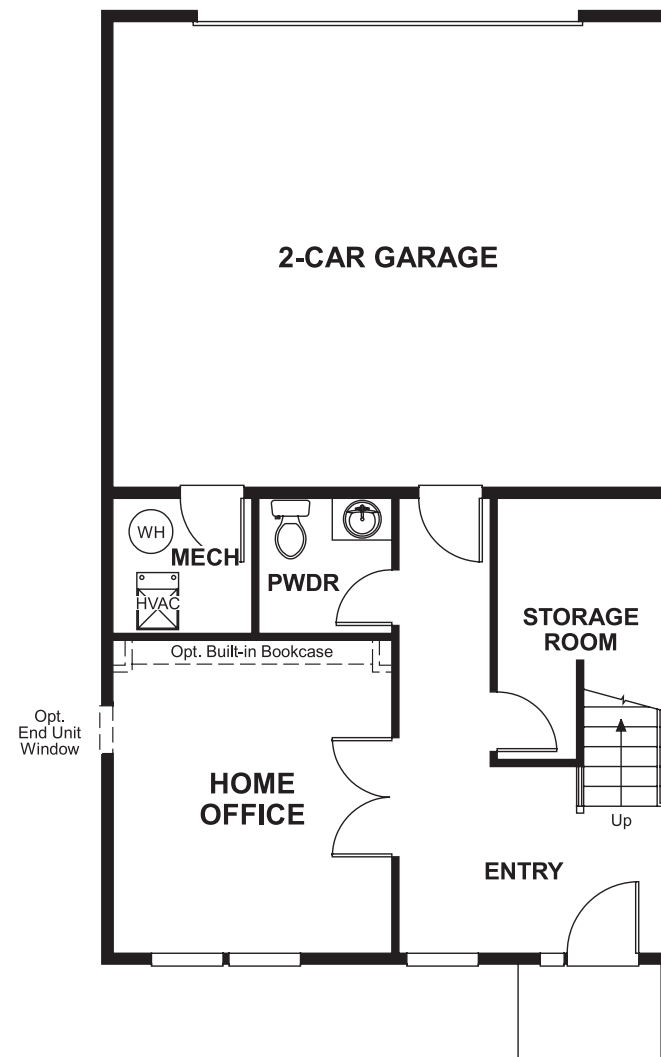
Madison Crescent
KENDRA

Approx. square feet: 2,250
Stories: 3
Bedrooms: 3

Garage: 2-car
Plan Number: M23K

Madison Crescent
KENDRA

Floor Plan
Lower Floor



Elevation D,A,C,B

Available elevations:



Elevation D,A,C,B

Approx. square feet: 2,250
Stories: 3
Bedrooms: 3
Garage: 2-car
Plan Number: M23K

Looking for a new home with the right live/work balance? Put the Kendra plan at the top of your list! Just off the entry, you'll find a dedicated home office space with an optional built-in bookcase and nearby powder bath. When you're ready to leave your desk behind, your dining and living rooms, open kitchen and nook are only a staircase away. The top floor offers three inviting bedrooms, including a master suite with optional deluxe bath and walk-in closet.

COMMUNITY LOCATION

Lee Highway and Route 15
Gainesville, VA 20155
888-891-7349

HOME GALLERY

11393 Government Center Parkway
Fairfax, VA 22030
888-891-7349



COMMUNITY LOCATION

Lee Highway and Route 15
Gainesville, VA 20155
888-891-7349

HOME GALLERY

11393 Government Center Parkway
Fairfax, VA 22030
888-891-7349

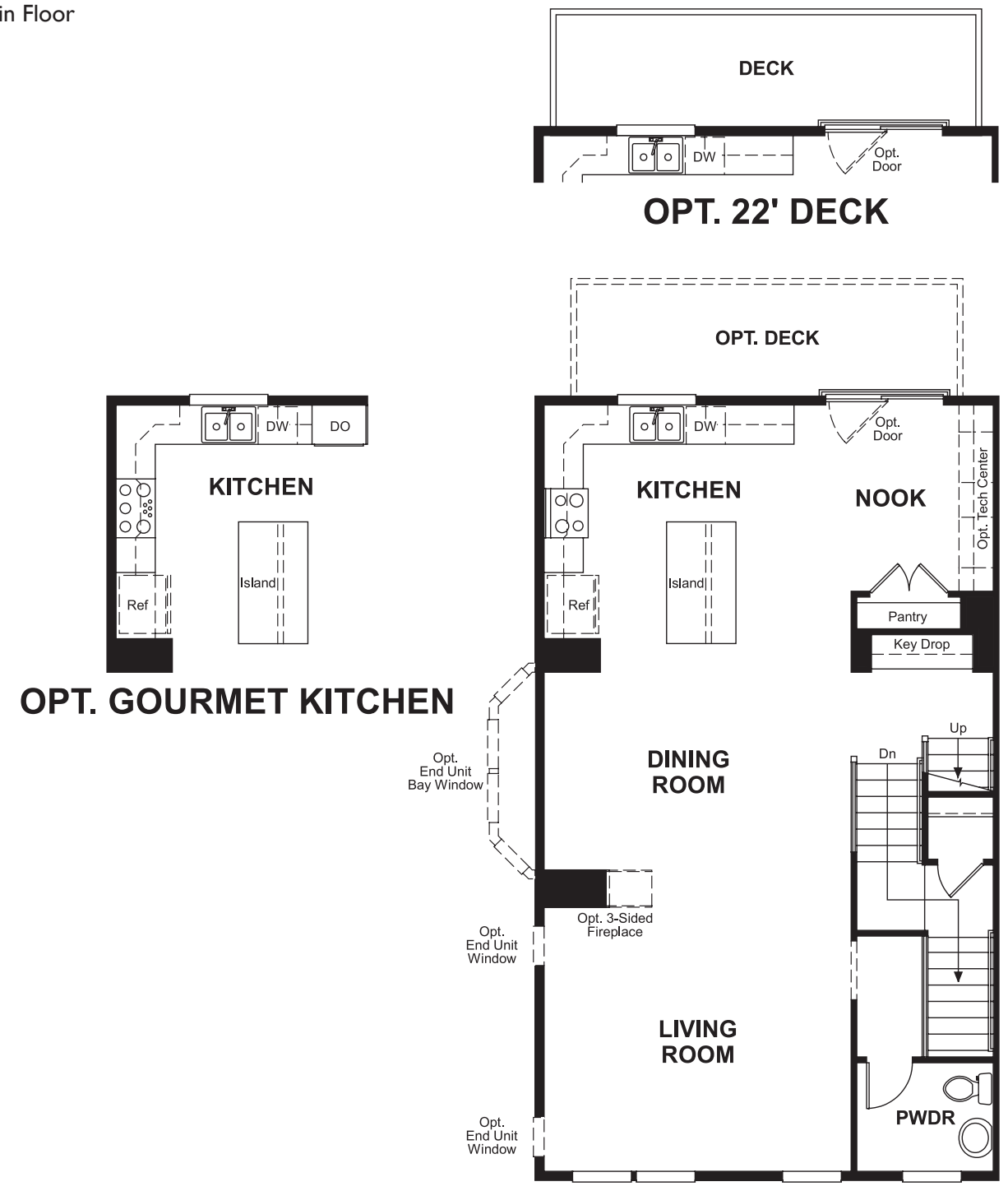


Madison Crescent
KENDRA

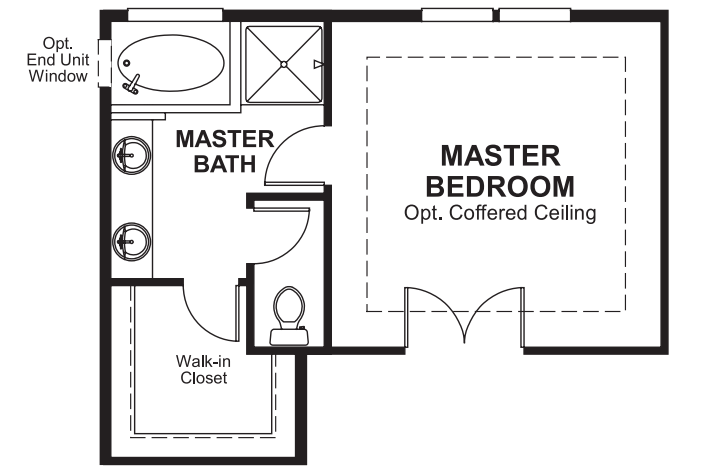
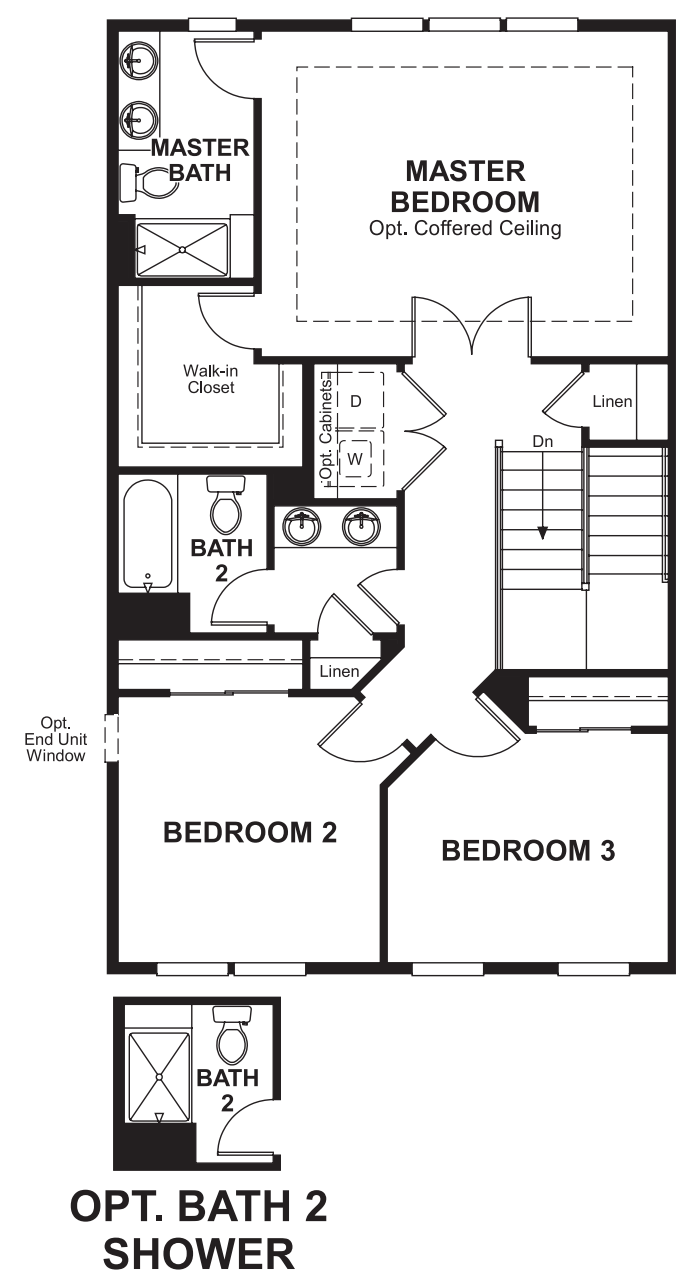
Approx. square feet: 2,250
Stories: 3
Bedrooms: 3

Garage: 2-car
Plan Number: M23K

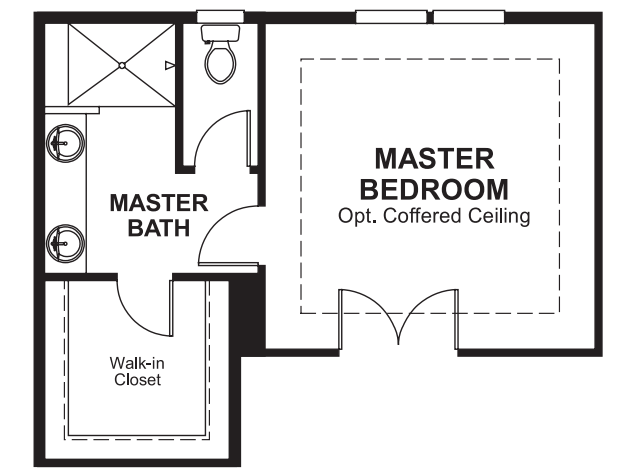
Floor Plan
Main Floor



Floor Plan
Second Floor



OPT. DELUXE MASTER BATH



OPT. WALK-IN SHOWER

OPT. BATH 2 SHOWER