

Villages of Piedmont  
**KEVIN**

**Approx. square feet:** 2,950  
**Stories:** 3  
**Bedrooms:** 3 - 4

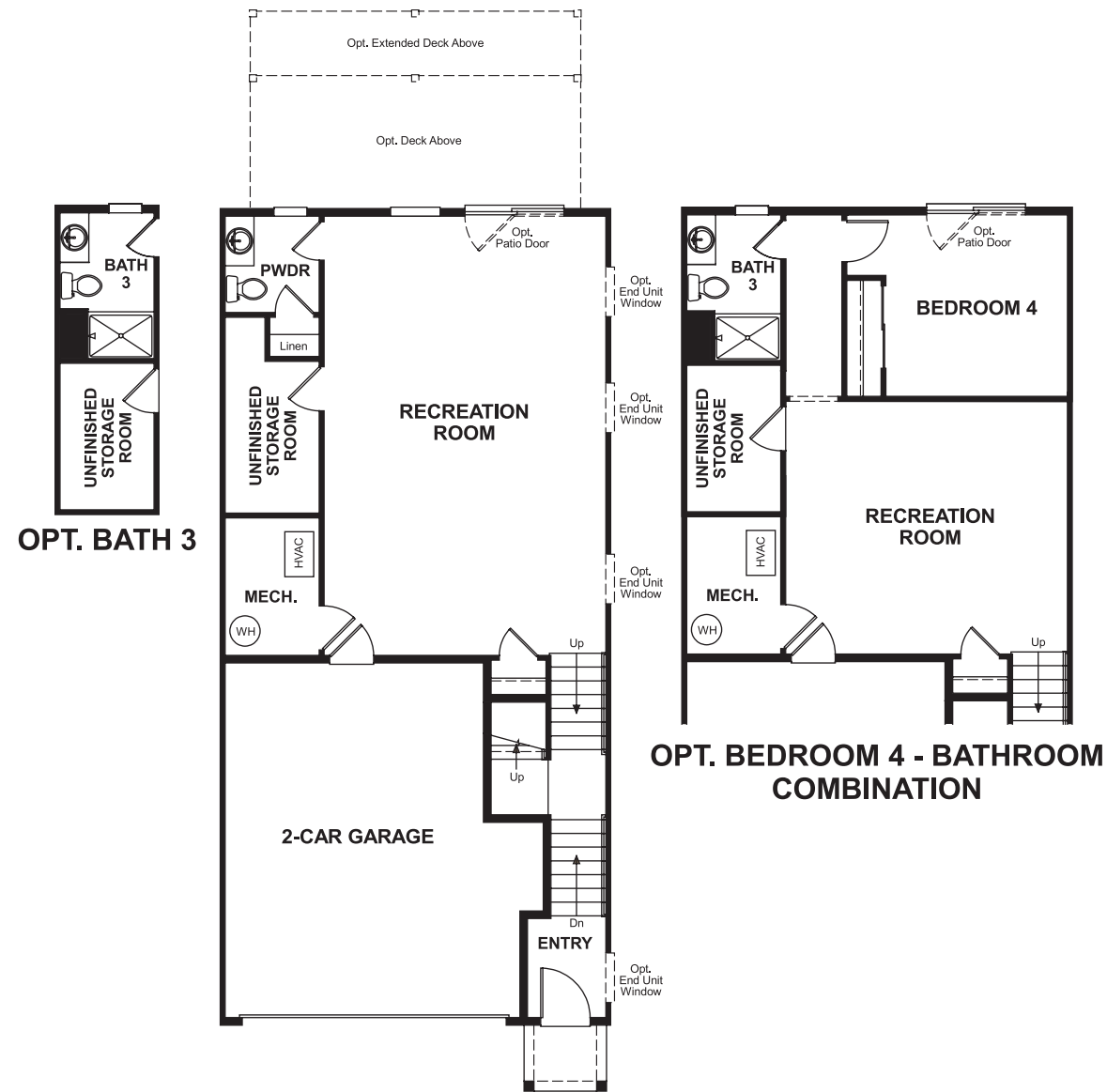
**Garage:** 2-car  
**Plan Number:** V299

Villages of Piedmont  
**KEVIN**

**Approx. square feet:** 2,950  
**Stories:** 3  
**Bedrooms:** 3 - 4  
**Garage:** 2-car  
**Plan Number:** V299

The main floor of the luxurious Kevin plan offers a formal dining room, a spacious great room with an optional fireplace and a well-appointed kitchen with a center island, walk-in pantry and optional gourmet features. Upstairs, you'll find a convenient laundry and a lavish master suite with a sitting area and optional deluxe bath. You'll also appreciate the 2-car garage and expansive recreation room on the lower floor.

**Floor Plan**  
Lower Floor



Elevation F/A/C/D/G/B/H/E

Available elevations:



Elevation F/A/C/D/G/B/H/E

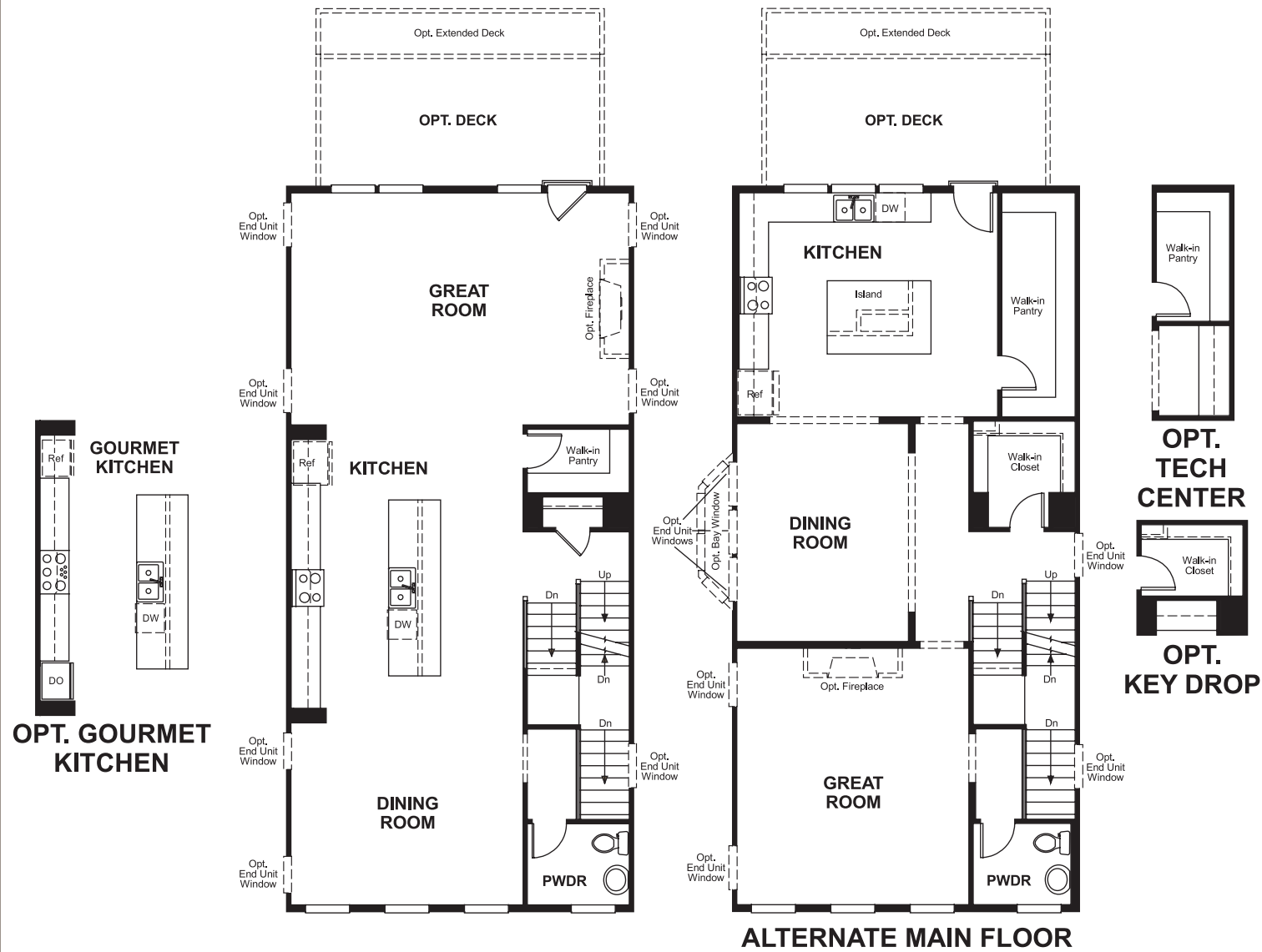
**COMMUNITY LOCATION**  
6801 Bryson Circle  
Haymarket, VA 20169  
888-891-7349

**HOME GALLERY**  
1139 Government Center Parkway  
Fairfax, VA 22030  
888-891-7349

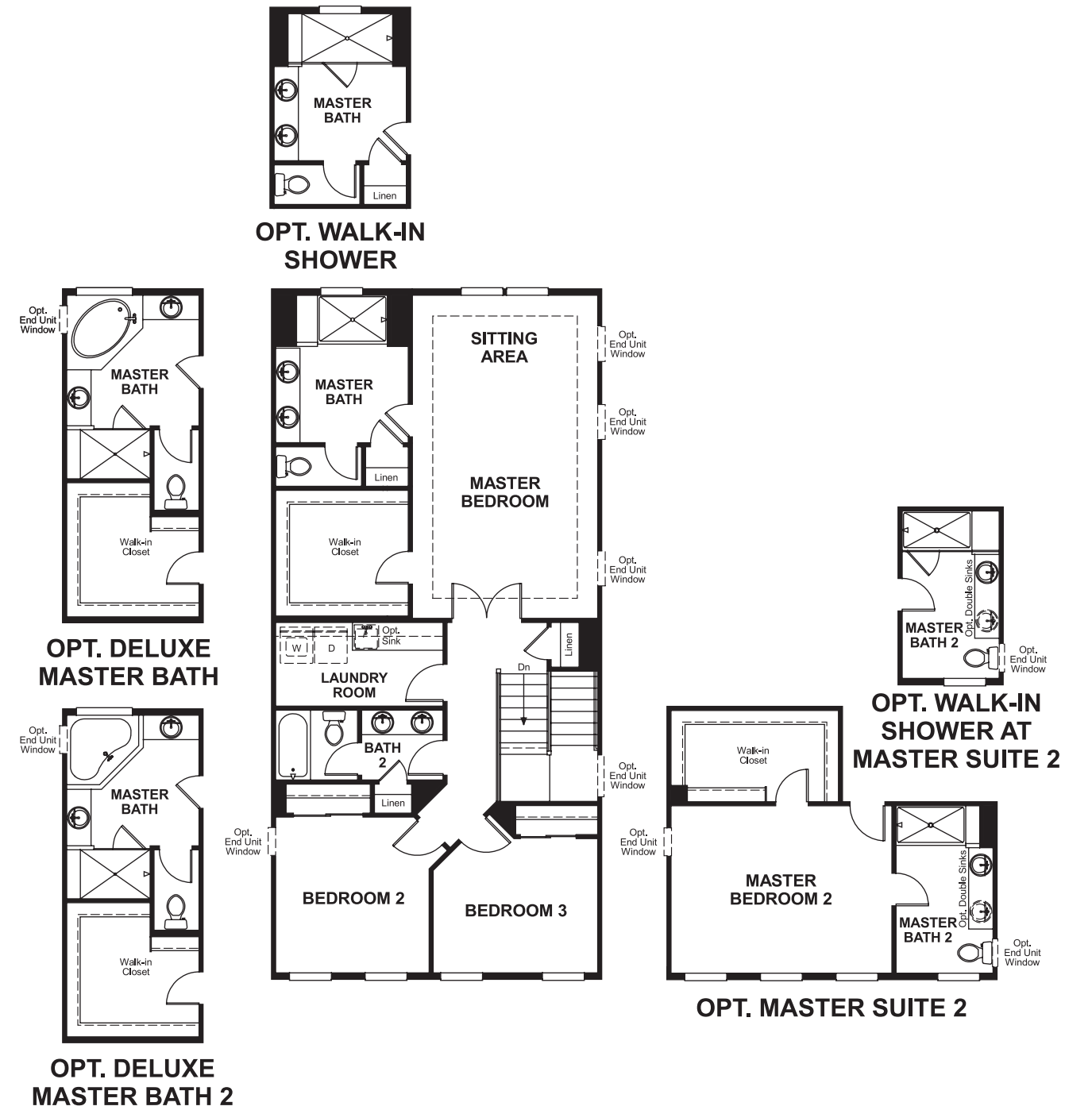
**COMMUNITY LOCATION**  
6801 Bryson Circle  
Haymarket, VA 20169  
888-891-7349

**HOME GALLERY**  
1139 Government Center Parkway  
Fairfax, VA 22030  
888-891-7349

**Floor Plan**  
Main Floor



**Floor Plan**  
Second Floor



**THIS PLAN'S PROJECTED HERS® INDEX = 65\***  
Projected Rating Based on Plans – Field Confirmation Required

**How does this floor plan rate?**  
Take a look: **100** = Standard new home\* **130** = Typical resale home\*\*  
The lower the number, the better! Refer to the RESNET® HERS index brochure or go to [www.RESNET.us](http://www.RESNET.us) for details.

**What's a HERS® Index?** HERS stands for Home Energy Rating System, a system created by RESNET® to measure home energy efficiency.<sup>^</sup>  
A Projected HERS index or rating is a computer simulation performed prior to construction by a third-party HERS rater using RESNET-accredited rating software, rated feature and specification data derived from home plans, features and specifications, and other data selected or assumed by the rater. The projected HERS index is approximate and is subject to change without notice. Actual results will vary.

\*This information is presented for education purposes only. The HERS index for a confirmed rating will be determined by a third-party HERS rater based on data gathered from on-site observations and, if required, testing of rated features for a home as featured, optioned, located, oriented and/or built.  
+Standard new home is based on the RESNET® Reference Home definition with a HERS® index of 100 (based on the 2006 International Energy Conservation Code).  
++Typical resale home is based on the U.S. Department of Energy definition with a HERS® index of 130.

<sup>^</sup>RESNET® has developed the HERS® index to indicate the comparative efficiencies of homes. It is no guarantee that energy efficiencies will be achieved.