

Residences at Buckingham  
**KIMBERLY**

**Approx. square feet:** 1,950  
**Stories:** 3  
**Bedrooms:** 3 - 4

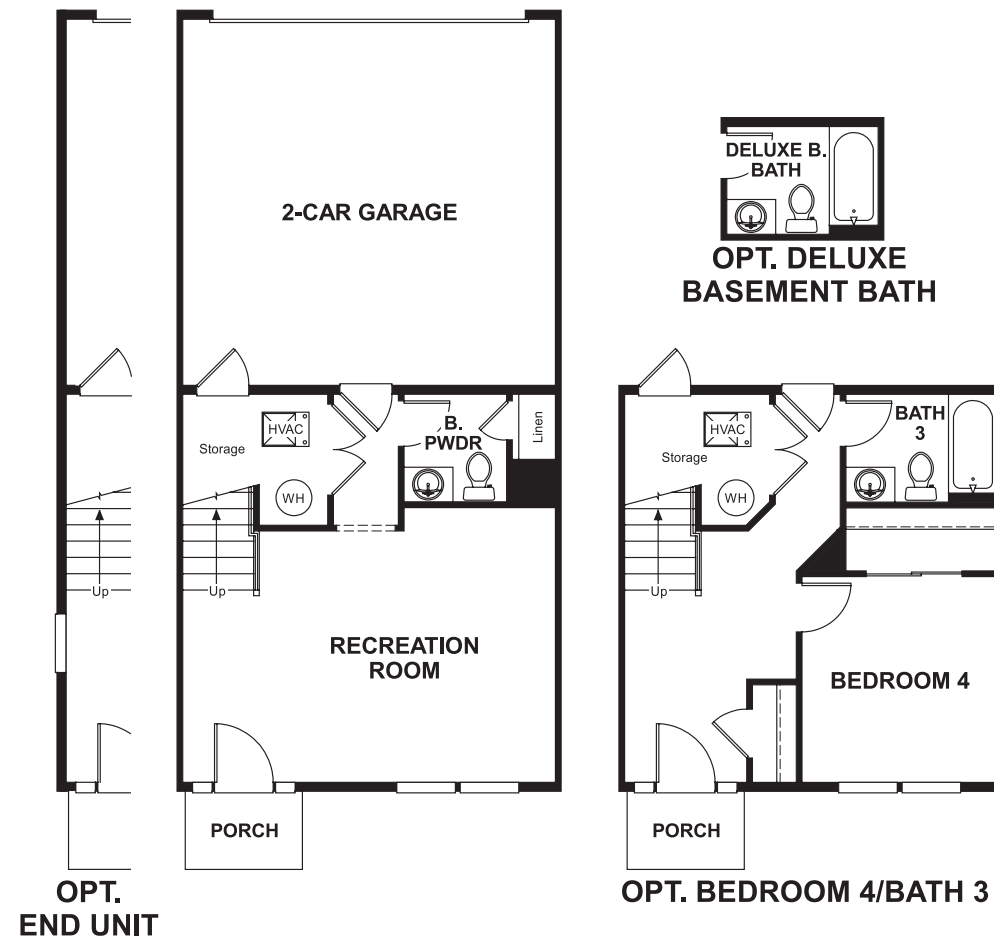
**Garage:** 2-car  
**Plan Number:** M19K

Residences at Buckingham  
**KIMBERLY**

**Approx. square feet:** 1,950  
**Stories:** 3  
**Bedrooms:** 3 - 4  
**Garage:** 2-car  
**Plan Number:** M19K

The unique Kimberly plan is spacious and elegant with ample options for personalization. The great room with optional fireplace overlooks a large deck, and the open kitchen with island flows into a formal dining room. A deluxe master bath upstairs, a powder room on the main level and a finished lower level are all included. Also available is an optional gourmet kitchen on the main level as well as a recreation room and optional fourth bedroom with the finished lower level.

**Floor Plan**  
Lower Level



**Elevation P, G, L, M, N**

**Available elevations:**



**Elevation P, G, L, M, N**

**COMMUNITY LOCATION**  
1117 Bayberry Avenue  
Hanover, MD 21076  
888-772-4545

**HOME GALLERY**  
6210 Old Dobbin Lane, Suite 190  
Columbia, MD 21045  
888-772-4545

**COMMUNITY LOCATION**  
1117 Bayberry Avenue  
Hanover, MD 21076  
888-772-4545

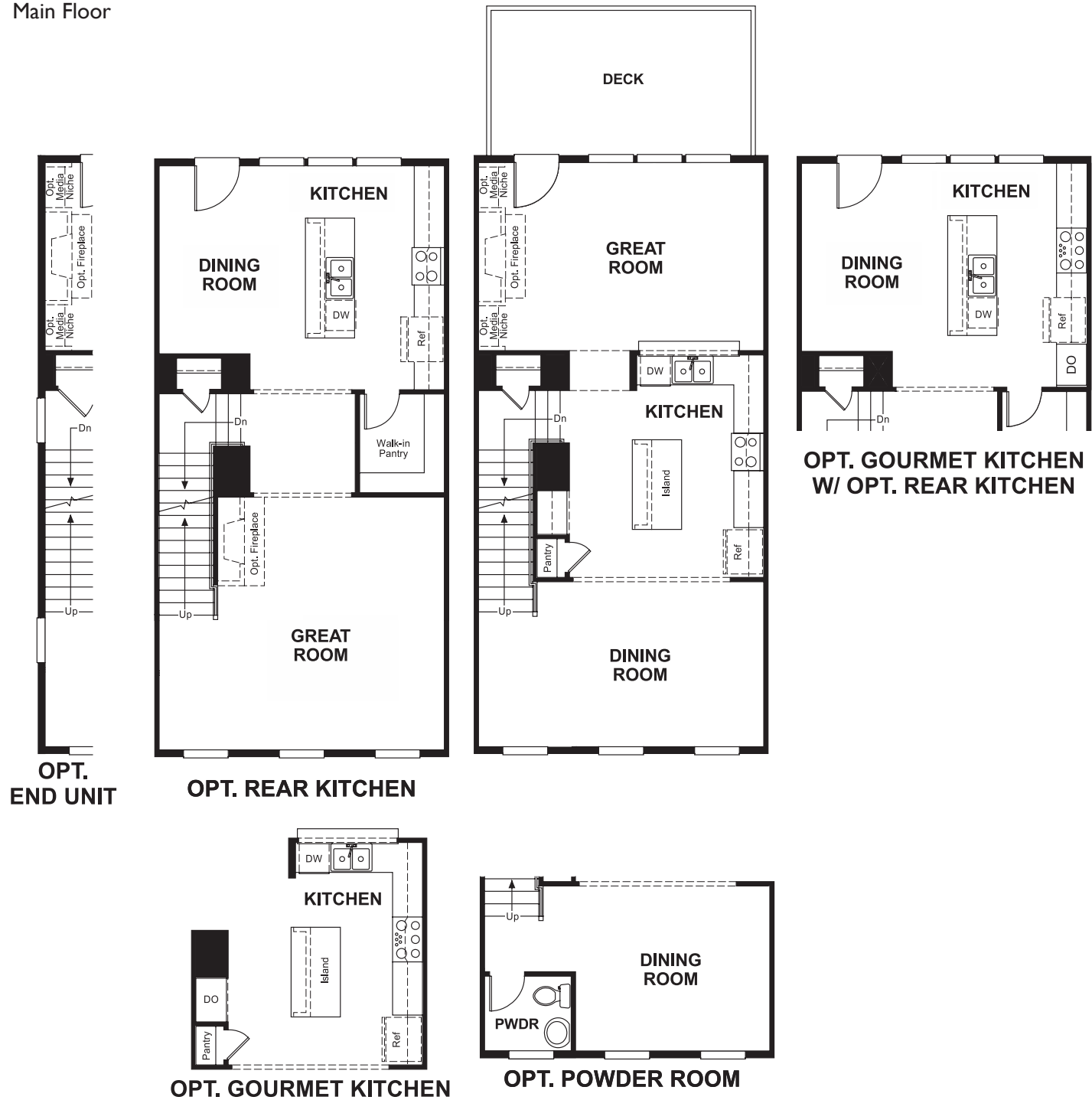
**HOME GALLERY**  
6210 Old Dobbin Lane, Suite 190  
Columbia, MD 21045  
888-772-4545

Residences at Buckingham  
**KIMBERLY**

**Approx. square feet:** 1,950  
**Stories:** 3  
**Bedrooms:** 3 - 4

**Garage:** 2-car  
**Plan Number:** M19K

**Floor Plan**  
Main Floor



**Floor Plan**  
Second Floor

