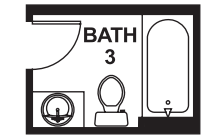
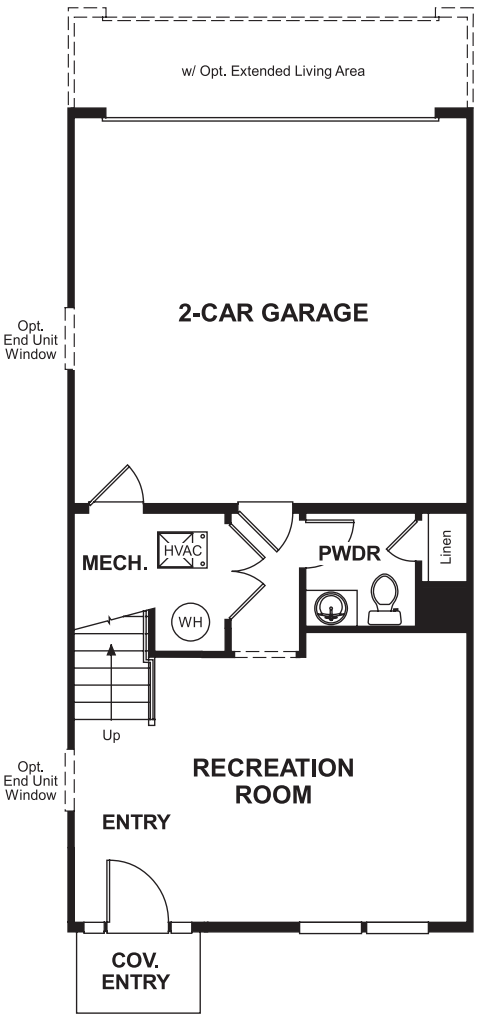


Eastchurch
KIMBERLY

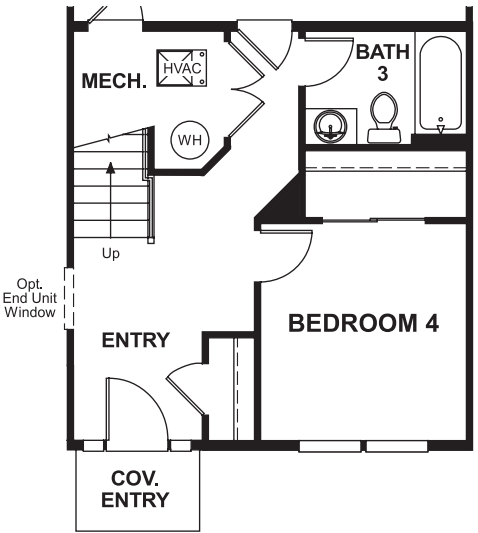
Approx. square feet: 1,950
Stories: 3
Bedrooms: 3 - 4

Garage: 2-car
Plan Number: M19K

Floor Plan
Lower Floor



OPT. BATH 3



**OPT. BEDROOM 4/
BATH 3**

COMMUNITY LOCATION
725 Holden Road
Frederick, MD 21701
410-312-2829



Eastchurch
KIMBERLY

Approx. square feet: 1,950
Stories: 3
Bedrooms: 3 - 4
Garage: 2-car
Plan Number: M19K

This 3-bedroom townhome offers both livability and sophistication. A 2-car rear-load garage gives this plan charming curb appeal. The main floor features an open kitchen overlooking a dining room and great room with standard deck. On the second floor, you'll find the spacious master bedroom with optional deluxe master bath. A rec room is located on the lower level.



Elevation HDCEAFBG

Available elevations:



Elevation HDCEAFBG

COMMUNITY LOCATION
725 Holden Road
Frederick, MD 21701
410-312-2829

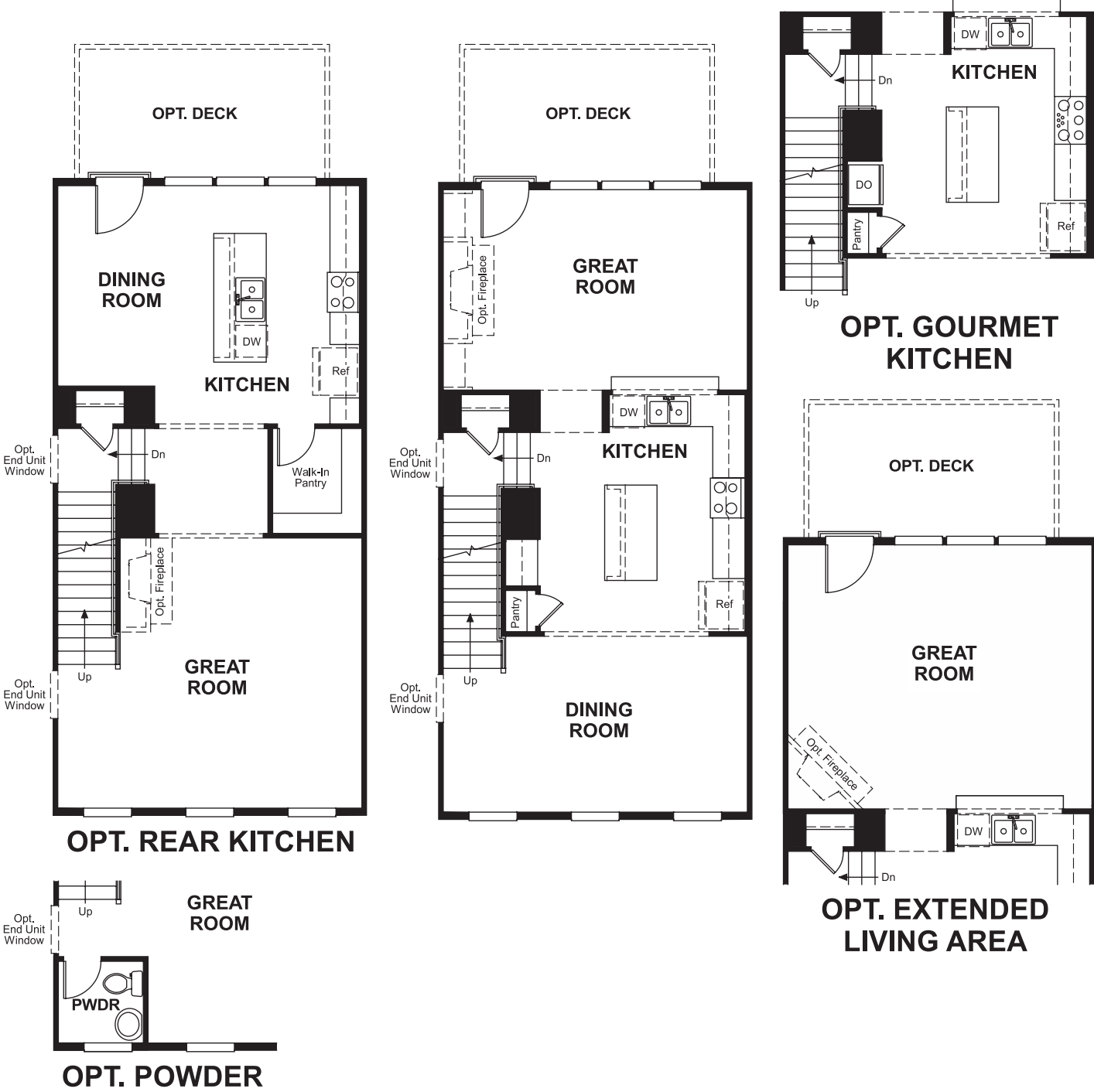


Eastchurch
KIMBERLY

Approx. square feet: 1,950
Stories: 3
Bedrooms: 3 - 4

Garage: 2-car
Plan Number: M19K

Floor Plan
Main Floor



Floor Plan
Upper Floor



**THIS PLAN'S PROJECTED
HERS® INDEX = 69 ***
Projected Rating Based on Plans – Field Confirmation Required

How does this floor plan rate?
Take a look: **100** = Standard new home* **130** = Typical resale home**
The lower the number, the better! Refer to the RESNET® HERS index brochure or go to **www.RESNET.us** for details.

What's a HERS® Index? HERS stands for Home Energy Rating System, a system created by RESNET® to measure home energy efficiency.^
A Projected HERS index or rating is a computer simulation performed prior to construction by a third-party HERS rater using RESNET-accredited rating software, rated feature and specification data derived from home plans, features and specifications, and other data selected or assumed by the rater. The projected HERS index is approximate and is subject to change without notice. Actual results will vary.

*This information is presented for education purposes only. The HERS index for a confirmed rating will be determined by a third-party HERS rater based on data gathered from on-site observations and, if required, testing of rated features for a home as featured, optioned, located, oriented and/or built.
+Standard new home is based on the RESNET® Reference Home definition with a HERS® index of 100 (based on the 2006 International Energy Conservation Code).
++Typical resale home is based on the U.S. Department of Energy definition with a HERS® index of 130.

^RESNET® has developed the HERS® index to indicate the comparative efficiencies of homes. It is no guarantee that energy efficiencies will be achieved.