

Sycamore Point
LACEY



Elevation A

Approx. square feet: 1,400
Stories: 1
Bedrooms: 3
Garage: 2-car
Plan Number: T577

The entry to the ranch-style Lacey plan is flanked by an expansive great room with an optional fireplace and an inviting kitchen with abundant counter space, a comfortable breakfast nook and optional gourmet features. You'll also appreciate three generous bedrooms, including a luxurious master suite with private bath, optional bay window and an adjacent covered patio.

Available elevations:



Elevation A



Elevation B - Shown with optional stone



Elevation C - Shown with optional stone



COMMUNITY LOCATION
 6741 East Neptune Cove Road
 Tucson, AZ 85756
 520-498-4144

HOME GALLERY
 3091 West Ina Road
 Tucson, AZ 85741
 520-498-4155



COMMUNITY LOCATION
 6741 East Neptune Cove Road
 Tucson, AZ 85756
 520-498-4144

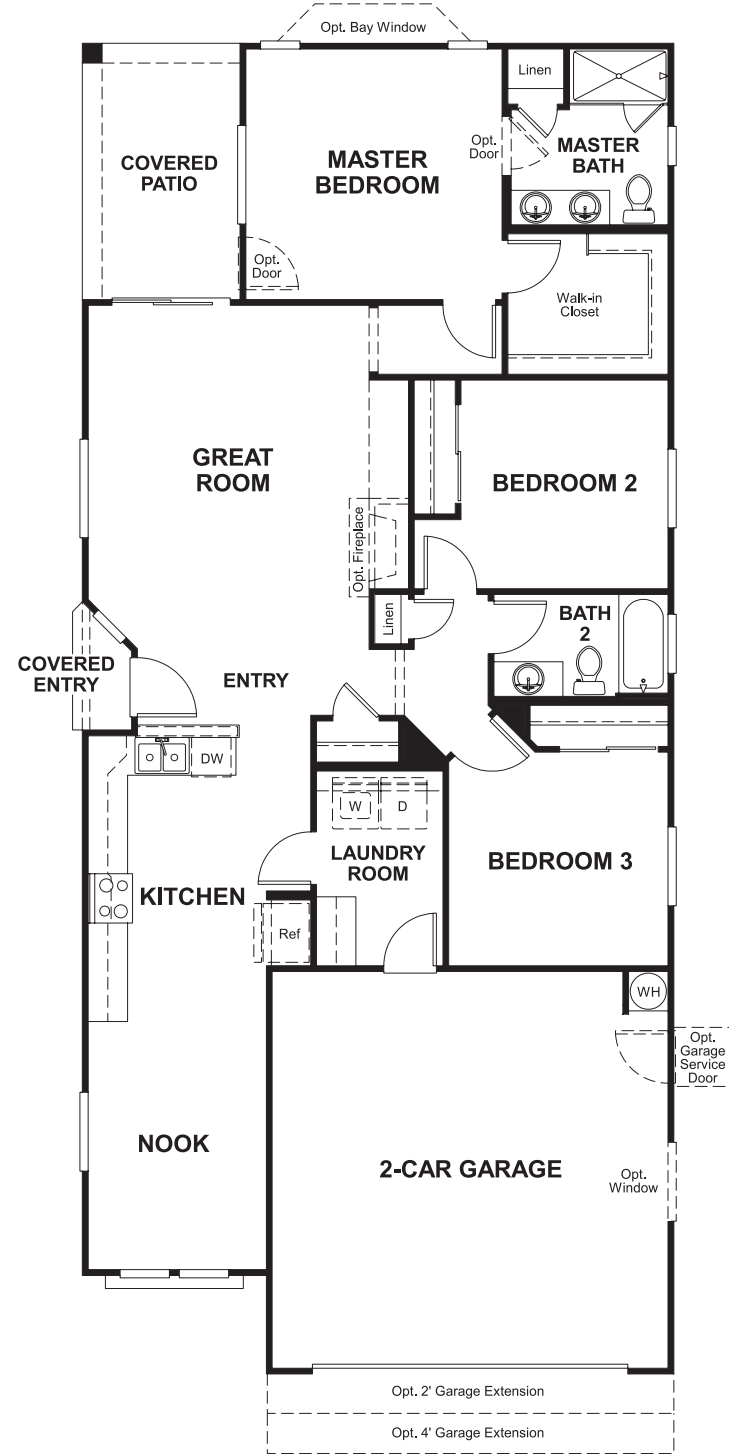
HOME GALLERY
 3091 West Ina Road
 Tucson, AZ 85741
 520-498-4155

Sycamore Point
LACEY

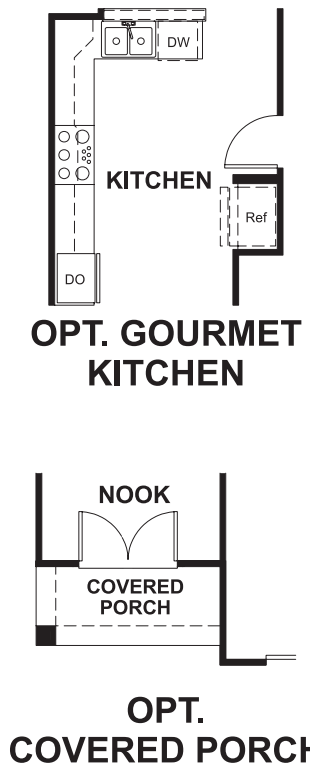
Approx. square feet: 1,400
Stories: 1
Bedrooms: 3

Garage: 2-car
Plan Number: T577

Floor Plan
First Floor



Floor Plan
First Floor Options



**THIS PLAN'S PROJECTED
HERS® INDEX = 71 ***
Projected Rating Based on Plans – Field Confirmation Required

How does this floor plan rate?
Take a look: **100** = Standard new home* **130** = Typical resale home**
The lower the number, the better! Refer to the RESNET® HERS index brochure or go to www.RESNET.us for details.

What's a HERS® Index? HERS stands for Home Energy Rating System, a system created by RESNET® to measure home energy efficiency.[^]
A Projected HERS index or rating is a computer simulation performed prior to construction by a third-party HERS rater using RESNET-accredited rating software, rated feature and specification data derived from home plans, features and specifications, and other data selected or assumed by the rater. The projected HERS index is approximate and is subject to change without notice. Actual results will vary.

*This information is presented for education purposes only. The HERS index for a confirmed rating will be determined by a third-party HERS rater based on data gathered from on-site observations and, if required, testing of rated features for a home as featured, optioned, located, oriented and/or built.
+Standard new home is based on the RESNET® Reference Home definition with a HERS® index of 100 (based on the 2006 International Energy Conservation Code).
++Typical resale home is based on the U.S. Department of Energy definition with a HERS® index of 130.

[^]RESNET® has developed the HERS® index to indicate the comparative efficiencies of homes. It is no guarantee that energy efficiencies will be achieved.