

Blueberry Lane
LAYNE



Elevation B

Approx. square feet: 2,000
Stories: 2
Bedrooms: 3 - 4
Garage: 2-car
Plan Number: W19L

The Layne plan offers an open layout, smart features and personalized design options to fit every style. The main floor has an open great room with fireplace and a corner kitchen with central island and optional gourmet or chef's features. Upstairs, you'll find three bedrooms, including a large master suite with walk-in closet, plus a roomy loft.

Available elevations:



Elevation B



Elevation C



Elevation E

COMMUNITY LOCATION

19651 11th Place South
Des Moines, WA 98148
206-757-2818

HOME GALLERY

20829 72nd Avenue South, Suite 115
Kent, WA 98032
253-446-7277



COMMUNITY LOCATION

19651 11th Place South
Des Moines, WA 98148
206-757-2818

HOME GALLERY

20829 72nd Avenue South, Suite 115
Kent, WA 98032
253-446-7277

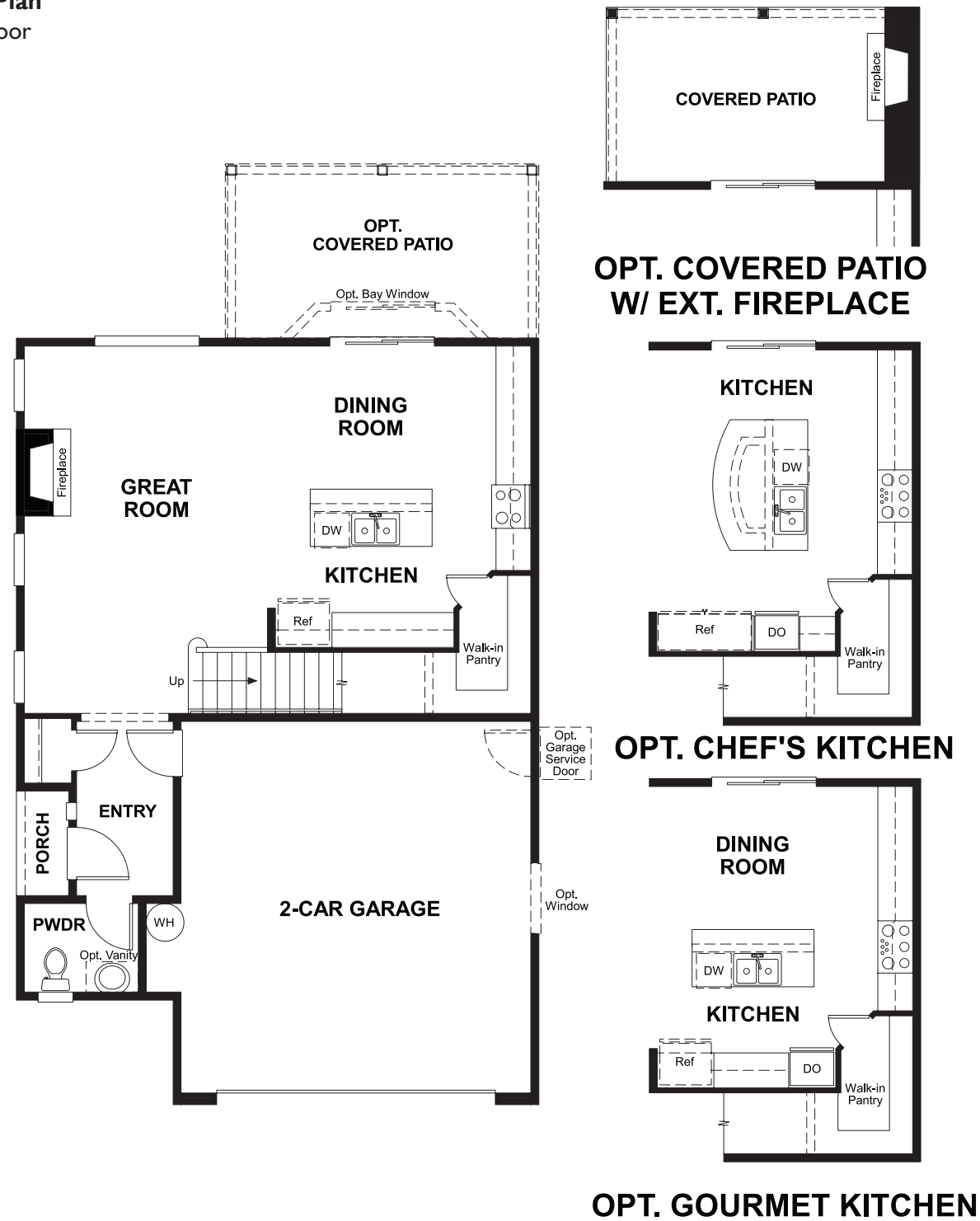


Blueberry Lane
LAYNE

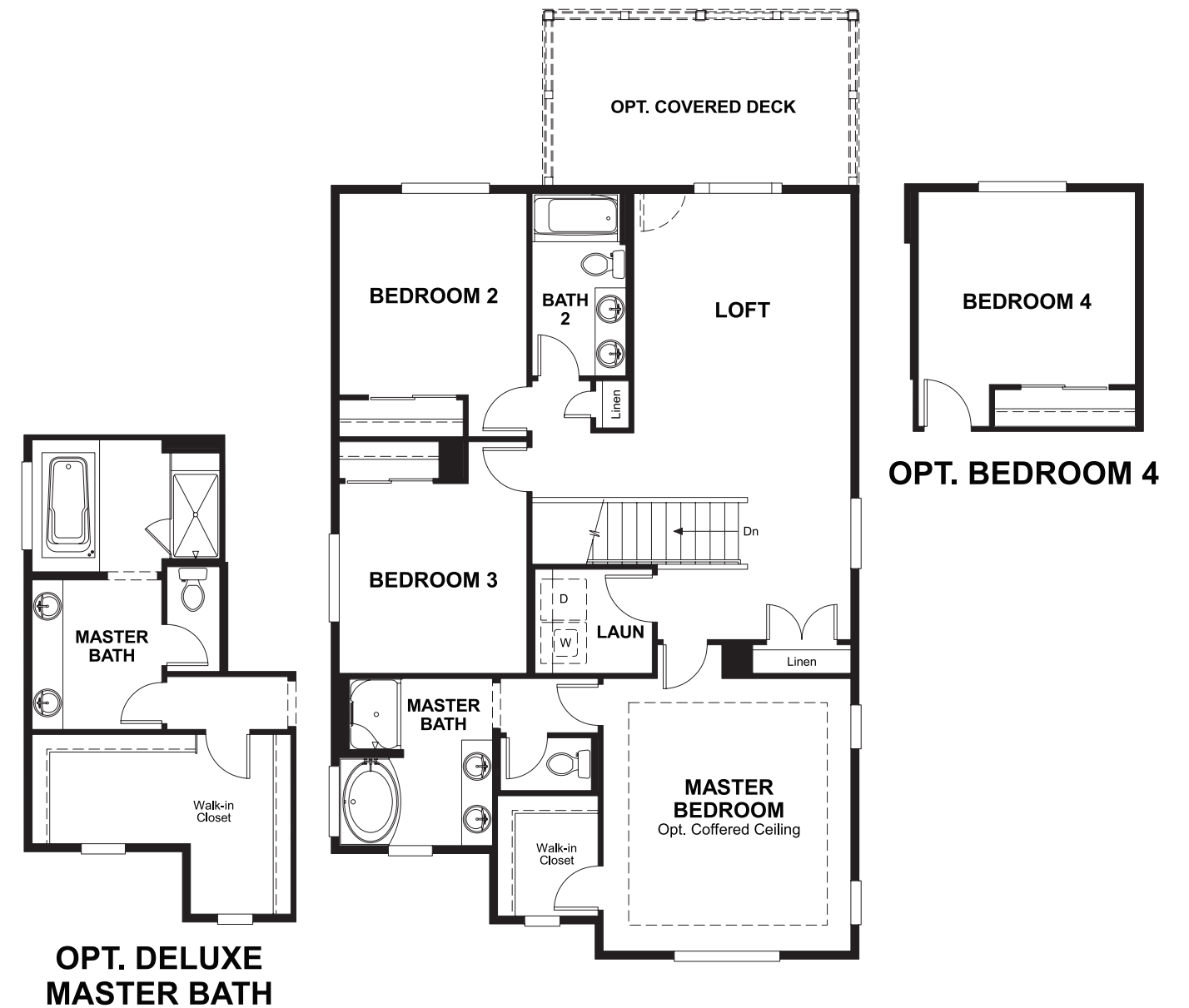
Approx. square feet: 2,000
Stories: 2
Bedrooms: 3 - 4

Garage: 2-car
Plan Number: W19L

Floor Plan
Main Floor



Floor Plan
Second Floor



THIS PLAN'S PROJECTED HERS® INDEX = TBD*
Projected Rating Based on Plans – Field Confirmation Required

How does this floor plan rate?
Take a look: **100** = Standard new home* **130** = Typical resale home**
The lower the number, the better! Refer to the RESNET® HERS index brochure or go to www.RESNET.us for details.

What's a HERS® Index? HERS stands for Home Energy Rating System, a system created by RESNET® to measure home energy efficiency.[^]
A Projected HERS index or rating is a computer simulation performed prior to construction by a third-party HERS rater using RESNET-accredited rating software, rated feature and specification data derived from home plans, features and specifications, and other data selected or assumed by the rater. The projected HERS index is approximate and is subject to change without notice. Actual results will vary.

*This information is presented for education purposes only. The HERS index for a confirmed rating will be determined by a third-party HERS rater based on data gathered from on-site observations and, if required, testing of rated features for a home as featured, optioned, located, oriented and/or built.
+Standard new home is based on the RESNET® Reference Home definition with a HERS® index of 100 (based on the 2006 International Energy Conservation Code).
++Typical resale home is based on the U.S. Department of Energy definition with a HERS® index of 130.

[^]RESNET® has developed the HERS® index to indicate the comparative efficiencies of homes. It is no guarantee that energy efficiencies will be achieved.