

Whispering Meadows  
**LILLIAN**



**Elevation B**

**Approx. square feet:** 2,050  
**Stories:** 2  
**Bedrooms:** 3  
**Garage:** 2-car  
**Plan Number:** W20L

From its covered porch to its open layout, the Lillian plan was designed with your livability in mind. On the main floor, the great room with optional fireplace opens to a large dining room, which flows into an inviting kitchen with central island, walk-in pantry and optional gourmet or chef's features. Upstairs, the master suite can be extended to include an optional retreat. Other options for personalization include a deluxe master bath and a loft.

**Available elevations:**



**Elevation B**



**Elevation C**



**Elevation E**

**COMMUNITY LOCATION**

3215 102<sup>nd</sup> Avenue Northeast  
Lake Stevens, WA 98258  
425-654-0132

**HOME GALLERY**

20829 72<sup>nd</sup> Avenue South, Suite 115  
Kent, WA 98032  
253-446-7277



**COMMUNITY LOCATION**

3215 102<sup>nd</sup> Avenue Northeast  
Lake Stevens, WA 98258  
425-654-0132

**HOME GALLERY**

20829 72<sup>nd</sup> Avenue South, Suite 115  
Kent, WA 98032  
253-446-7277

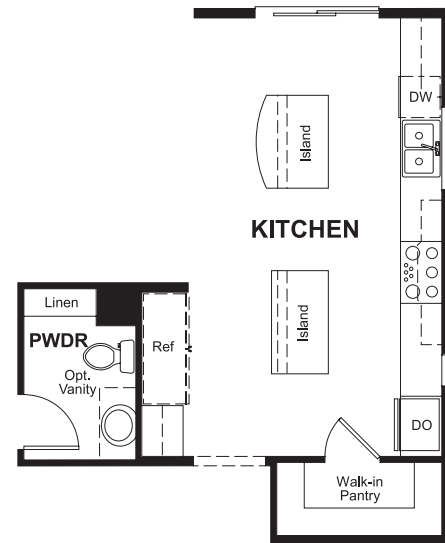


Whispering Meadows  
**LILLIAN**

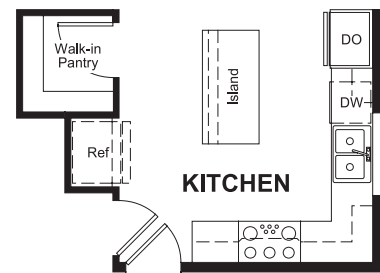
**Approx. square feet:** 2,050  
**Stories:** 2  
**Bedrooms:** 3

**Garage:** 2-car  
**Plan Number:** W20L

**Floor Plan**  
Main Floor

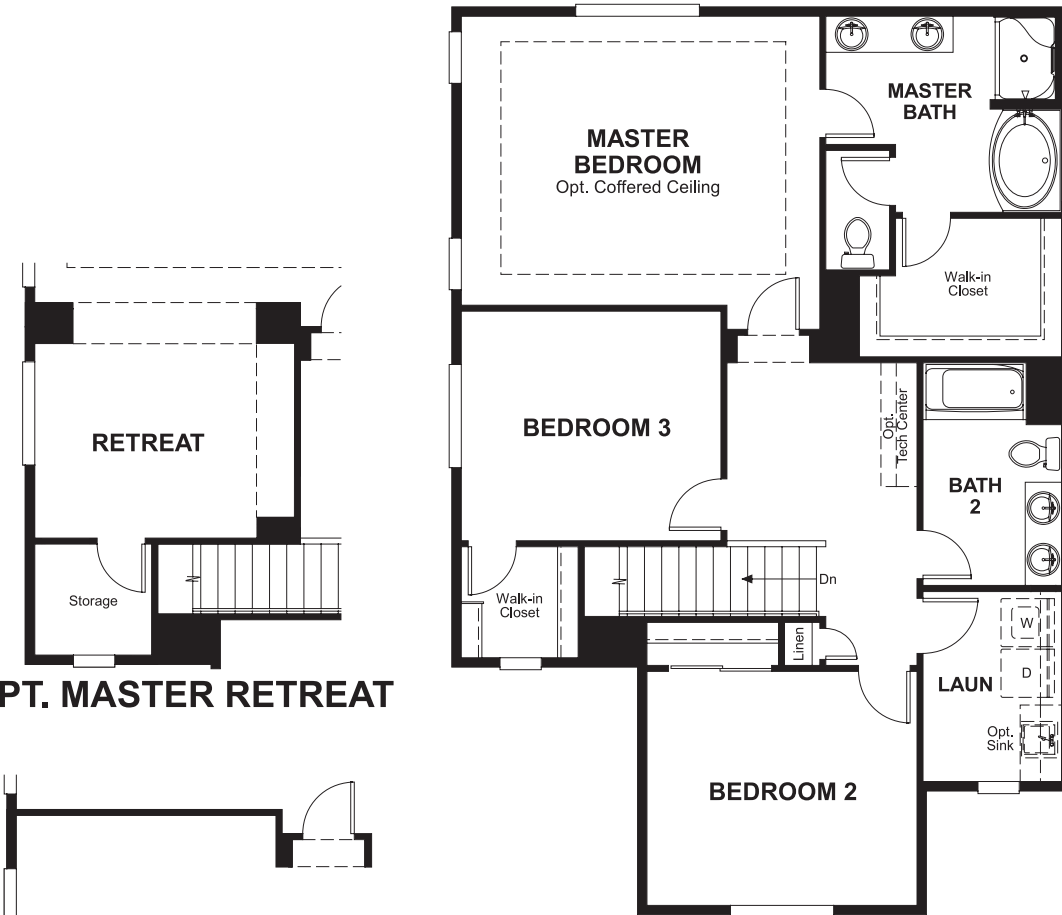


**OPT. CHEF'S KITCHEN**

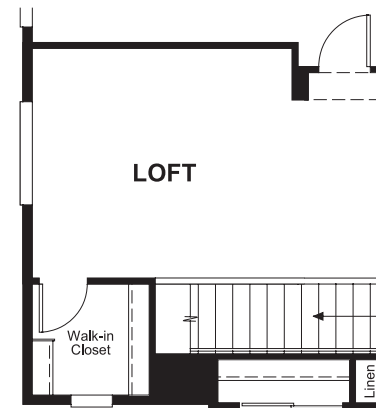


**OPT. GOURMET KITCHEN**

**Floor Plan**  
Second Floor



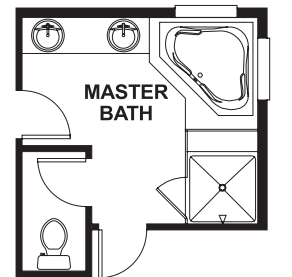
**OPT. MASTER RETREAT**



**OPT. LOFT**



**OPT. DELUXE MASTER BATH**



**OPT. MASTER BATH W/ 6' TUB**

**THIS PLAN'S PROJECTED HERS® INDEX = 69\***  
Projected Rating Based on Plans – Field Confirmation Required

**How does this floor plan rate?**  
Take a look: **100** = Standard new home\* **130** = Typical resale home\*\*  
The lower the number, the better! Refer to the RESNET® HERS index brochure or go to [www.RESNET.us](http://www.RESNET.us) for details.

**What's a HERS® Index?** HERS stands for Home Energy Rating System, a system created by RESNET® to measure home energy efficiency.<sup>^</sup>  
A Projected HERS index or rating is a computer simulation performed prior to construction by a third-party HERS rater using RESNET-accredited rating software, rated feature and specification data derived from home plans, features and specifications, and other data selected or assumed by the rater. The projected HERS index is approximate and is subject to change without notice. Actual results will vary.

\*This information is presented for education purposes only. The HERS index for a confirmed rating will be determined by a third-party HERS rater based on data gathered from on-site observations and, if required, testing of rated features for a home as featured, optioned, located, oriented and/or built.  
+Standard new home is based on the RESNET® Reference Home definition with a HERS® index of 100 (based on the 2006 International Energy Conservation Code).  
++Typical resale home is based on the U.S. Department of Energy definition with a HERS® index of 130.

<sup>^</sup>RESNET® has developed the HERS® index to indicate the comparative efficiencies of homes. It is no guarantee that energy efficiencies will be achieved.