

Sycamore Point  
**LYNDA**



**Elevation A**

**Approx. square feet:** 1,650  
**Stories:** 2  
**Bedrooms:** 3  
**Garage:** 2-car  
**Plan Number:** T16L

From the inviting covered entry, walk into this home's two-story foyer and expansive great room with optional fireplace. The great room opens to the sunny dining room and corner kitchen with optional gourmet features. Upstairs, three bedrooms, a versatile loft and an optional deluxe master bath await.

**Available elevations:**



**Elevation A**



**Elevation B**



**Elevation C - Shown with optional stone**



**COMMUNITY LOCATION**  
 6741 East Neptune Cove Road  
 Tucson, AZ 85756  
 877-346-8102

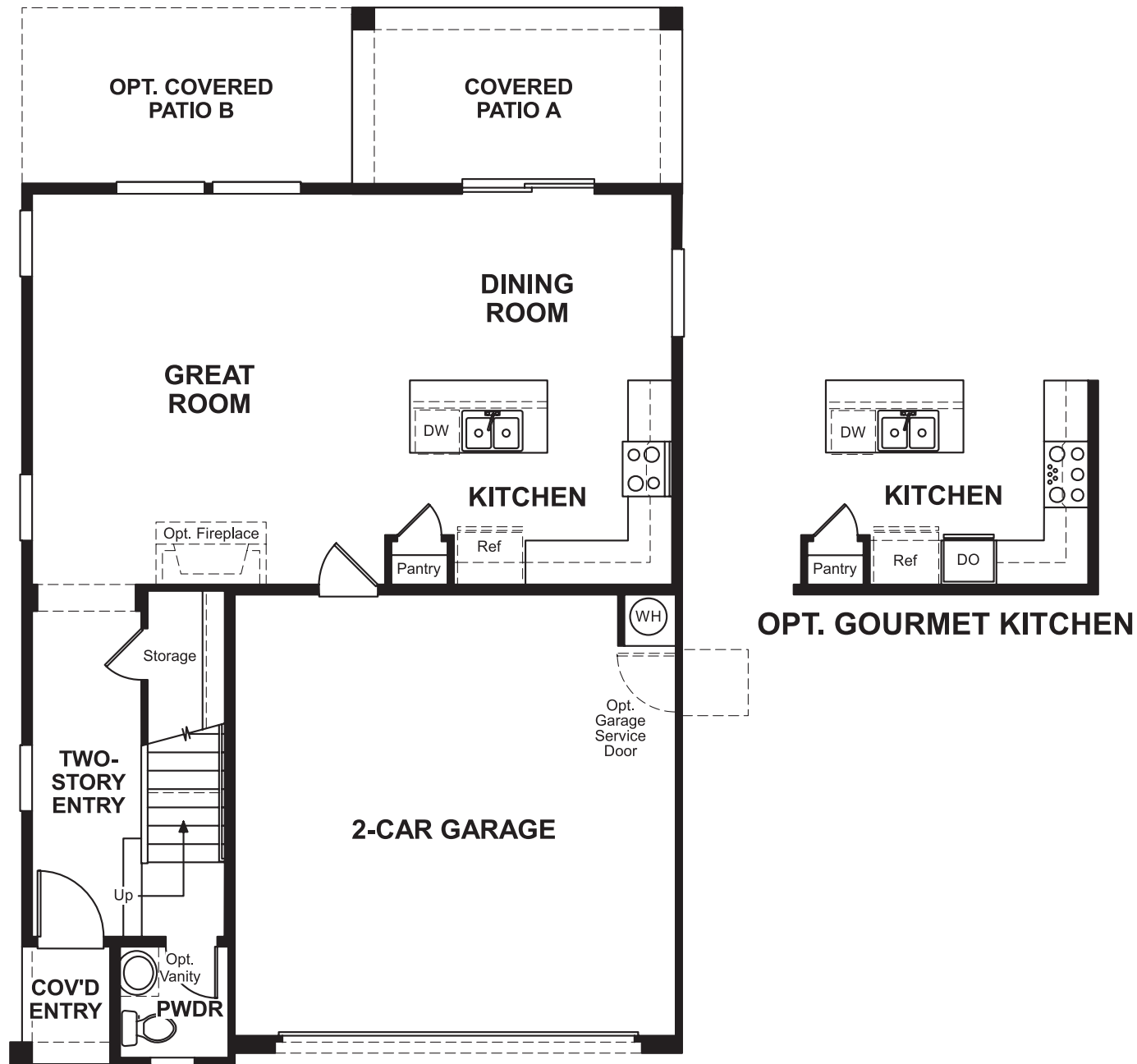
**HOME GALLERY**  
 3091 West Ina Road  
 Tucson, AZ 85741  
 877-346-8102



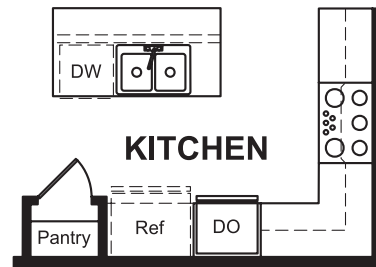
**COMMUNITY LOCATION**  
 6741 East Neptune Cove Road  
 Tucson, AZ 85756  
 877-346-8102

**HOME GALLERY**  
 3091 West Ina Road  
 Tucson, AZ 85741  
 877-346-8102

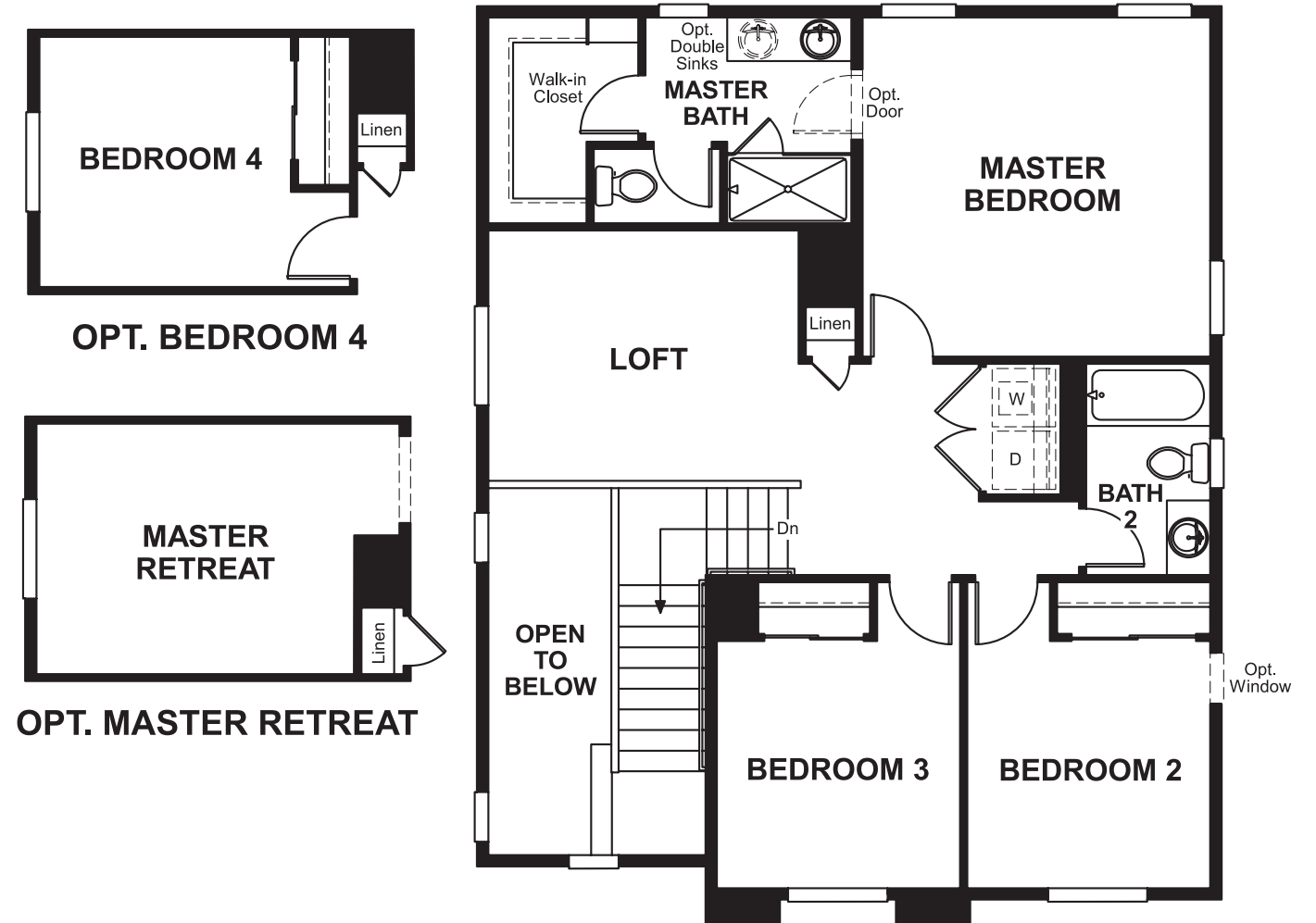
**Floor Plan**  
First Floor



**OPT. GOURMET KITCHEN**



**Floor Plan**  
Second Floor



**THIS PLAN'S PROJECTED  
HERS® INDEX = 68\***  
Projected Rating Based on Plans – Field Confirmation Required

**How does this floor plan rate?**  
Take a look: **100** = Standard new home\* **130** = Typical resale home\*\*  
The lower the number, the better! Refer to the RESNET® HERS index brochure or go to [www.RESNET.us](http://www.RESNET.us) for details.

**What's a HERS® Index?** HERS stands for Home Energy Rating System, a system created by RESNET® to measure home energy efficiency. A Projected HERS index or rating is a computer simulation performed prior to construction by a third-party HERS rater using RESNET-accredited rating software, rated feature and specification data derived from home plans, features and specifications, and other data selected or assumed by the rater. The projected HERS index is approximate and is subject to change without notice. Actual results will vary.

\*This information is presented for education purposes only. The HERS index for a confirmed rating will be determined by a third-party HERS rater based on data gathered from on-site observations and, if required, testing of rated features for a home as featured, optioned, located, oriented and/or built.  
+Standard new home is based on the RESNET® Reference Home definition with a HERS® index of 100 (based on the 2006 International Energy Conservation Code).  
\*\*Typical resale home is based on the U.S. Department of Energy definition with a HERS® index of 130.

^RESNET® has developed the HERS® index to indicate the comparative efficiencies of homes. It is no guarantee that energy efficiencies will be achieved.