

Serrano at Glenrose Ranch
NAOMI



Elevation A

Approx. square feet: 1,800
Stories: 2
Bedrooms: 3
Garage: 2-car
Plan Number: S681

Imagine your life in a new home with the Naomi floor plan. Wake up in the splendid second-floor master bedroom, then get ready for the day in your master bath with walk-in closet. On your way downstairs, you'll pass the laundry, two additional bedrooms and a shared bath. Enjoy breakfast at your kitchen island—or in the open dining room—before venturing out for the day. In the evenings, curl up by the optional fireplace or invite friends over to watch a movie in the great room.

Available elevations:



Elevation A



Elevation B



Elevation C

COMMUNITY LOCATION
7927 Prairie Rose Way
Highland, CA 92346
909-942-6780

HOME GALLERY
5171 California Avenue
Irvine, CA 92617
800-852-9714



COMMUNITY LOCATION
7927 Prairie Rose Way
Highland, CA 92346
909-942-6780

HOME GALLERY
5171 California Avenue
Irvine, CA 92617
800-852-9714

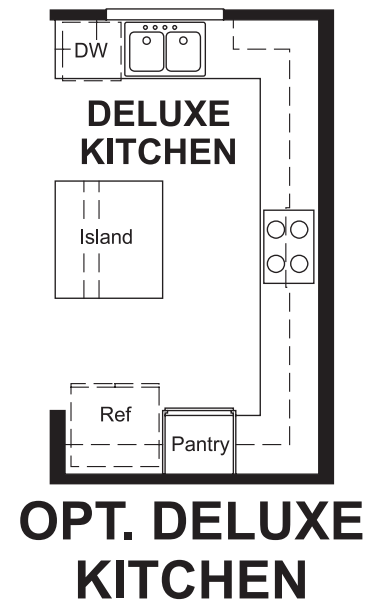
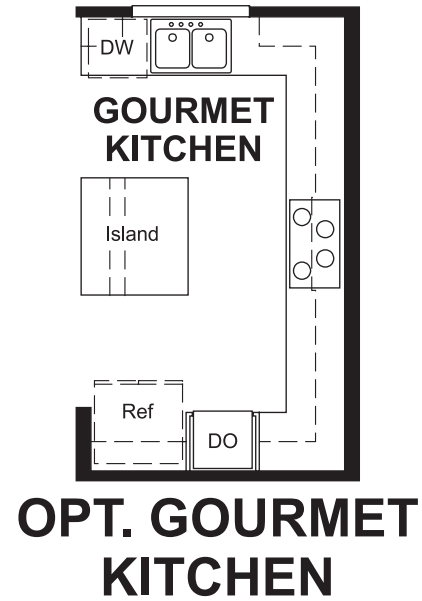
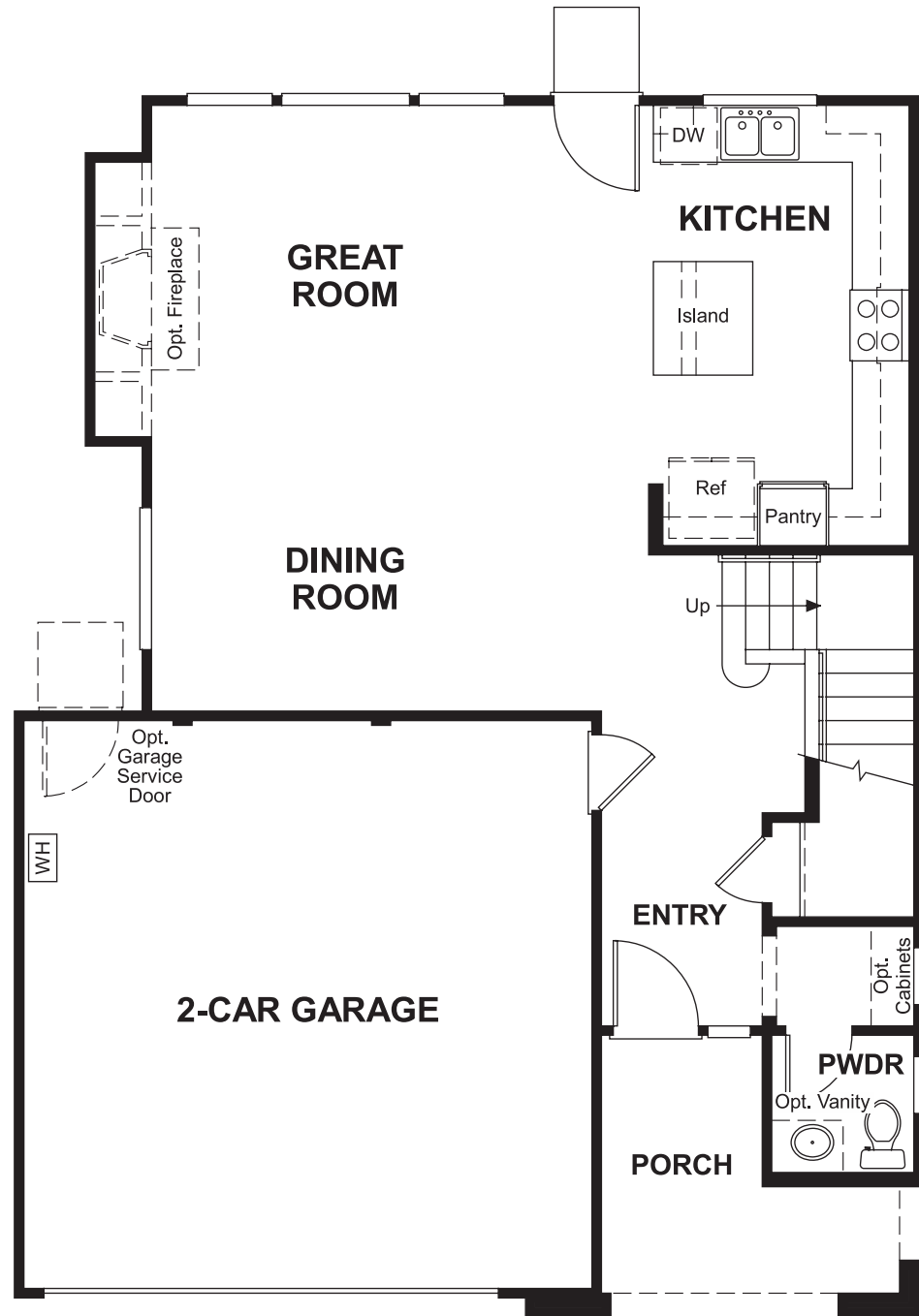


Serrano at Glenrose Ranch
NAOMI

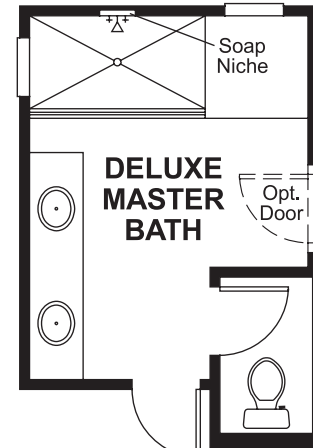
Approx. square feet: 1,800
Stories: 2
Bedrooms: 3

Garage: 2-car
Plan Number: S681

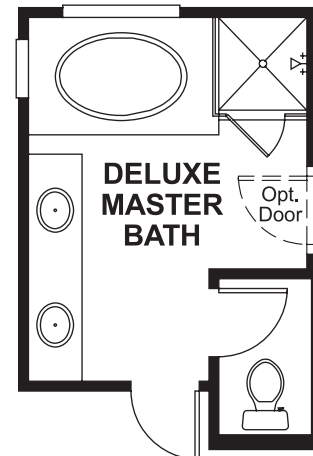
Floor Plan
Main Floor



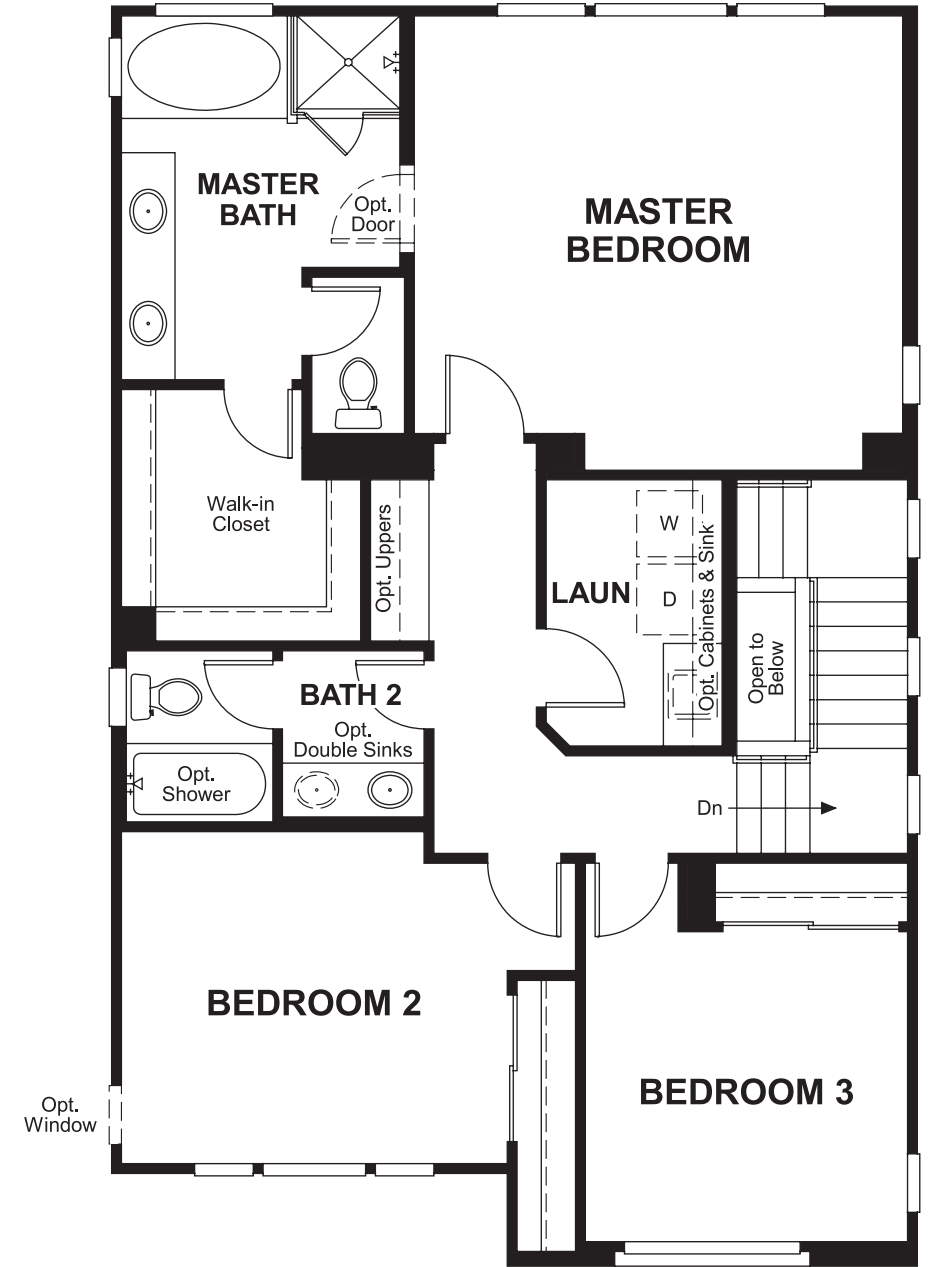
Floor Plan
Second Floor



OPT. WALK-IN SHOWER



OPT. DELUXE MASTER BATH



THIS PLAN'S PROJECTED HERS® INDEX = 67*
Projected Rating Based on Plans – Field Confirmation Required

How does this floor plan rate?
Take a look: **100** = Standard new home* **130** = Typical resale home**
The lower the number, the better! Refer to the RESNET® HERS index brochure or go to www.RESNET.us for details.

What's a HERS® Index? HERS stands for Home Energy Rating System, a system created by RESNET® to measure home energy efficiency.[^]
A Projected HERS index or rating is a computer simulation performed prior to construction by a third-party HERS rater using RESNET-accredited rating software, rated feature and specification data derived from home plans, features and specifications, and other data selected or assumed by the rater. The projected HERS index is approximate and is subject to change without notice. Actual results will vary.

*This information is presented for education purposes only. The HERS index for a confirmed rating will be determined by a third-party HERS rater based on data gathered from on-site observations and, if required, testing of rated features for a home as featured, optioned, located, oriented and/or built.
+Standard new home is based on the RESNET® Reference Home definition with a HERS® index of 100 (based on the 2006 International Energy Conservation Code).
**Typical resale home is based on the U.S. Department of Energy definition with a HERS® index of 130.

[^]RESNET® has developed the HERS® index to indicate the comparative efficiencies of homes. It is no guarantee that energy efficiencies will be achieved.