

Reagan's Run at Gold Ridge
NICOLE



Italian

Approx. square feet: 1,950
Stories: 2
Bedrooms: 3 - 4
Garage: 2-car
Plan Number: NI97

The main floor of the Nicole plan offers open spaces for entertaining—whether that's movie night in the great room, a formal meal in the dining room, a barbecue on the covered patio, or snacks at the kitchen island. Upstairs, walk-in closets and deluxe bath options complement the inviting bedrooms.

Available elevations:



Italian



Spanish



French Country C

COMMUNITY LOCATION

5290 Klingsell Place
Fairfield, CA 94533
704-416-0212

HOME GALLERY

One Harbor Center, Suite 150
Suisun City, CA 94585
800-852-9714



COMMUNITY LOCATION

5290 Klingsell Place
Fairfield, CA 94533
704-416-0212

HOME GALLERY

One Harbor Center, Suite 150
Suisun City, CA 94585
800-852-9714

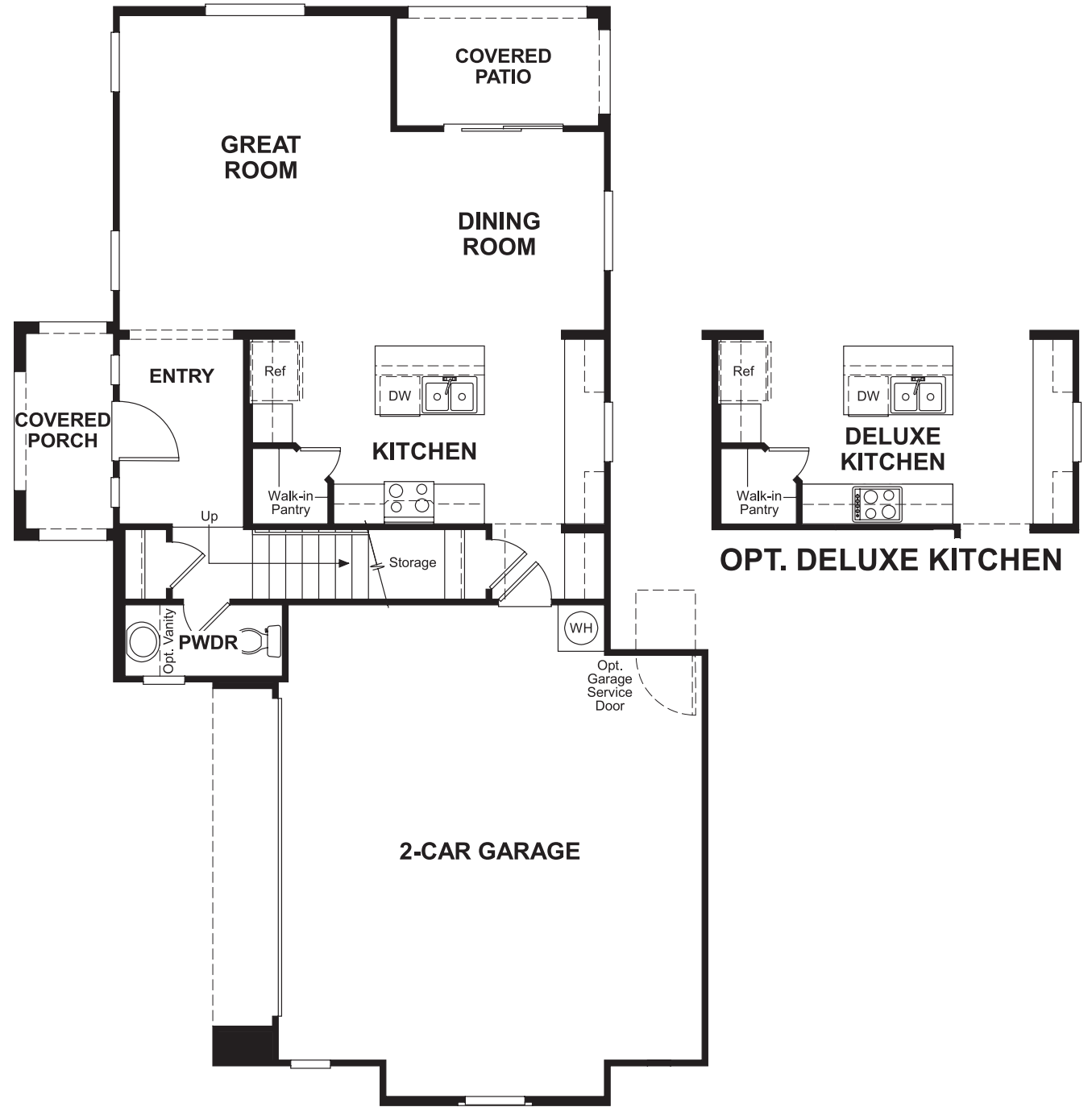


Reagan's Run at Gold Ridge
NICOLE

Approx. square feet: 1,950
Stories: 2
Bedrooms: 3 - 4

Garage: 2-car
Plan Number: N197

Floor Plan
Main Floor



Floor Plan
Second Floor



THIS PLAN'S PROJECTED HERS® INDEX = 68*
Projected Rating Based on Plans – Field Confirmation Required

How does this floor plan rate?
Take a look: **100** = Standard new home* **130** = Typical resale home**
The lower the number, the better! Refer to the RESNET® HERS index brochure or go to www.RESNET.us for details.

What's a HERS® Index? HERS stands for Home Energy Rating System, a system created by RESNET® to measure home energy efficiency.[^]
A Projected HERS index or rating is a computer simulation performed prior to construction by a third-party HERS rater using RESNET-accredited rating software, rated feature and specification data derived from home plans, features and specifications, and other data selected or assumed by the rater. The projected HERS index is approximate and is subject to change without notice. Actual results will vary.

*This information is presented for education purposes only. The HERS index for a confirmed rating will be determined by a third-party HERS rater based on data gathered from on-site observations and, if required, testing of rated features for a home as featured, optioned, located, oriented and/or built.
+Standard new home is based on the RESNET® Reference Home definition with a HERS® index of 100 (based on the 2006 International Energy Conservation Code).
**Typical resale home is based on the U.S. Department of Energy definition with a HERS® index of 130.

[^]RESNET® has developed the HERS® index to indicate the comparative efficiencies of homes. It is no guarantee that energy efficiencies will be achieved.