

Serrano at Glenrose Ranch
NIELSEN



Elevation A

Available elevations:



Elevation A



Elevation B



Elevation C

Approx. square feet: 1,900

Stories: 2

Bedrooms: 4

Garage: 2-car

Plan Number: S683

There's a lot to love in the Nielsen. The main floor includes a large great room and dining room, which open onto the well-equipped kitchen with a wide breakfast-bar island. Notice the convenient mudroom and powder room off the garage! Upstairs, you'll find four welcoming bedrooms, a laundry and the shared and master baths. Personalize this home with a covered back porch, a loft in lieu of a bedroom, master bath options, an extended garage, a deluxe or gourmet kitchen and a great room fireplace.

COMMUNITY LOCATION

7927 Prairie Rose Way
Highland, CA 92346
909-942-6780

HOME GALLERY

5171 California Avenue
Irvine, CA 92617
800-852-9714



COMMUNITY LOCATION

7927 Prairie Rose Way
Highland, CA 92346
909-942-6780

HOME GALLERY

5171 California Avenue
Irvine, CA 92617
800-852-9714

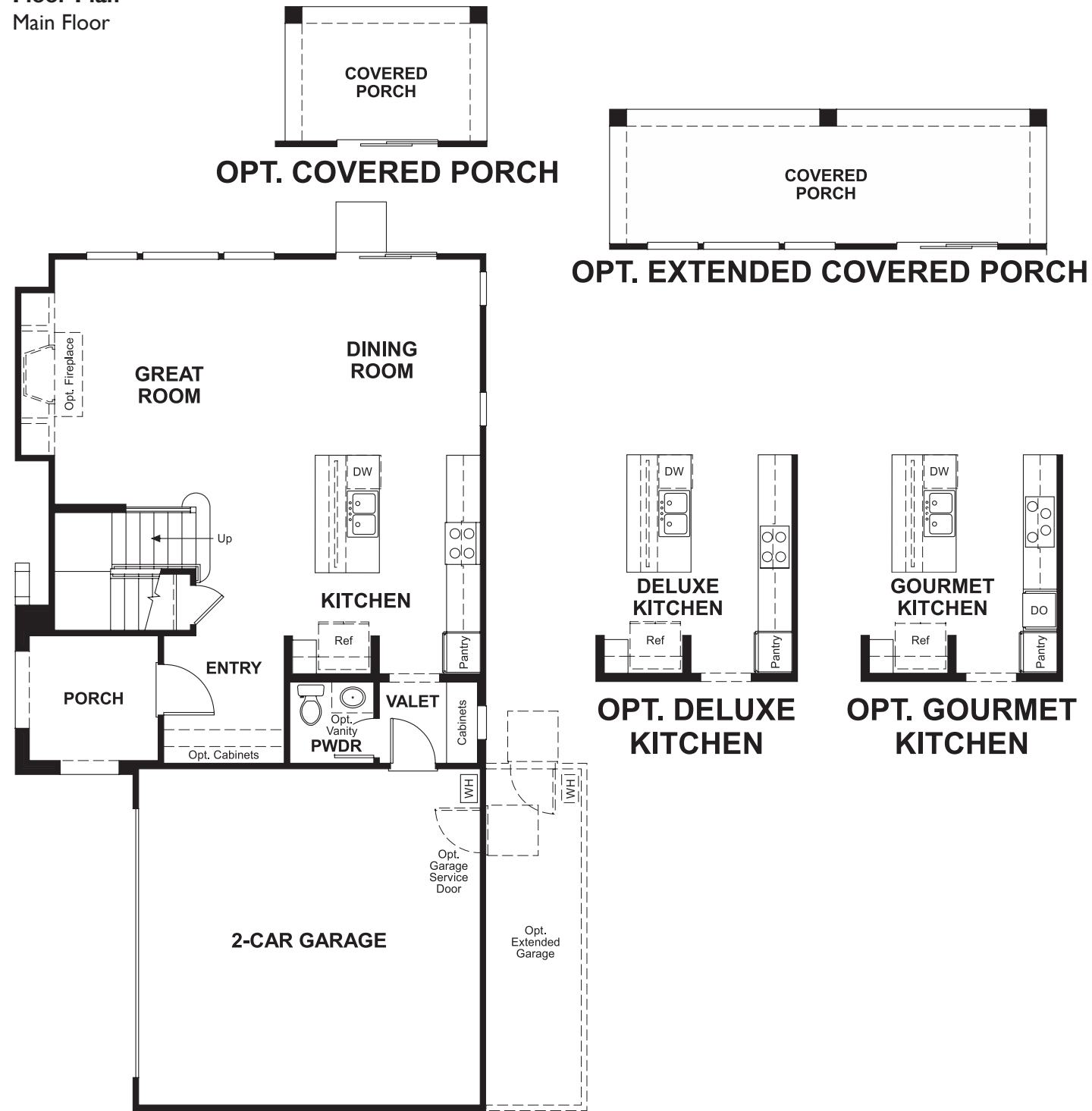


Serrano at Glenrose Ranch
NIELSEN

Approx. square feet: 1,900
Stories: 2
Bedrooms: 4

Garage: 2-car
Plan Number: S683

Floor Plan
Main Floor



Floor Plan
Second Floor



THIS PLAN'S PROJECTED
HERS® INDEX = 67*
Projected Rating Based on Plans – Field Confirmation Required

How does this floor plan rate?
Take a look: **100** = Standard new home* **130** = Typical resale home**
The lower the number, the better! Refer to the RESNET® HERS index brochure or go to www.RESNET.us for details.

What's a HERS® Index? HERS stands for Home Energy Rating System, a system created by RESNET® to measure home energy efficiency.[^]
A Projected HERS index or rating is a computer simulation performed prior to construction by a third-party HERS rater using RESNET-accredited rating software, rated feature and specification data derived from home plans, features and specifications, and other data selected or assumed by the rater. The projected HERS index is approximate and is subject to change without notice. Actual results will vary.

*This information is presented for education purposes only. The HERS index for a confirmed rating will be determined by a third-party HERS rater based on data gathered from on-site observations and, if required, testing of rated features for a home as featured, optioned, located, oriented and/or built.
+Standard new home is based on the RESNET® Reference Home definition with a HERS® index of 100 (based on the 2006 International Energy Conservation Code).
++Typical resale home is based on the U.S. Department of Energy definition with a HERS® index of 130.

[^]RESNET® has developed the HERS® index to indicate the comparative efficiencies of homes. It is no guarantee that energy efficiencies will be achieved.