

ELLWOOD AT BEACON PARK
NOLAN



Elevation A

Available elevations:



Elevation A



Elevation B



Elevation C

APPROX. SQUARE FEET: 2,300
STORIES: 2
BEDROOMS: 4
GARAGE: 2-CAR

This home features a foyer at entry, a guest bedroom down with a full bath a powder and a storage area. The kitchen looks into the living room and the dining area is off to the side. The upstairs has a large master with walk in closets for him and her. The master bath has a separate tub and shower and dual sinks. There is also 2 secondary bedrooms one with a WIC and a bath for both bedrooms.

COMMUNITY LOCATION

219 Radial
Irvine, CA 92618
800-852-9714

HOME GALLERY

5171 California Avenue
Irvine, CA 92617
800-852-9714



COMMUNITY LOCATION

219 Radial
Irvine, CA 92618
800-852-9714

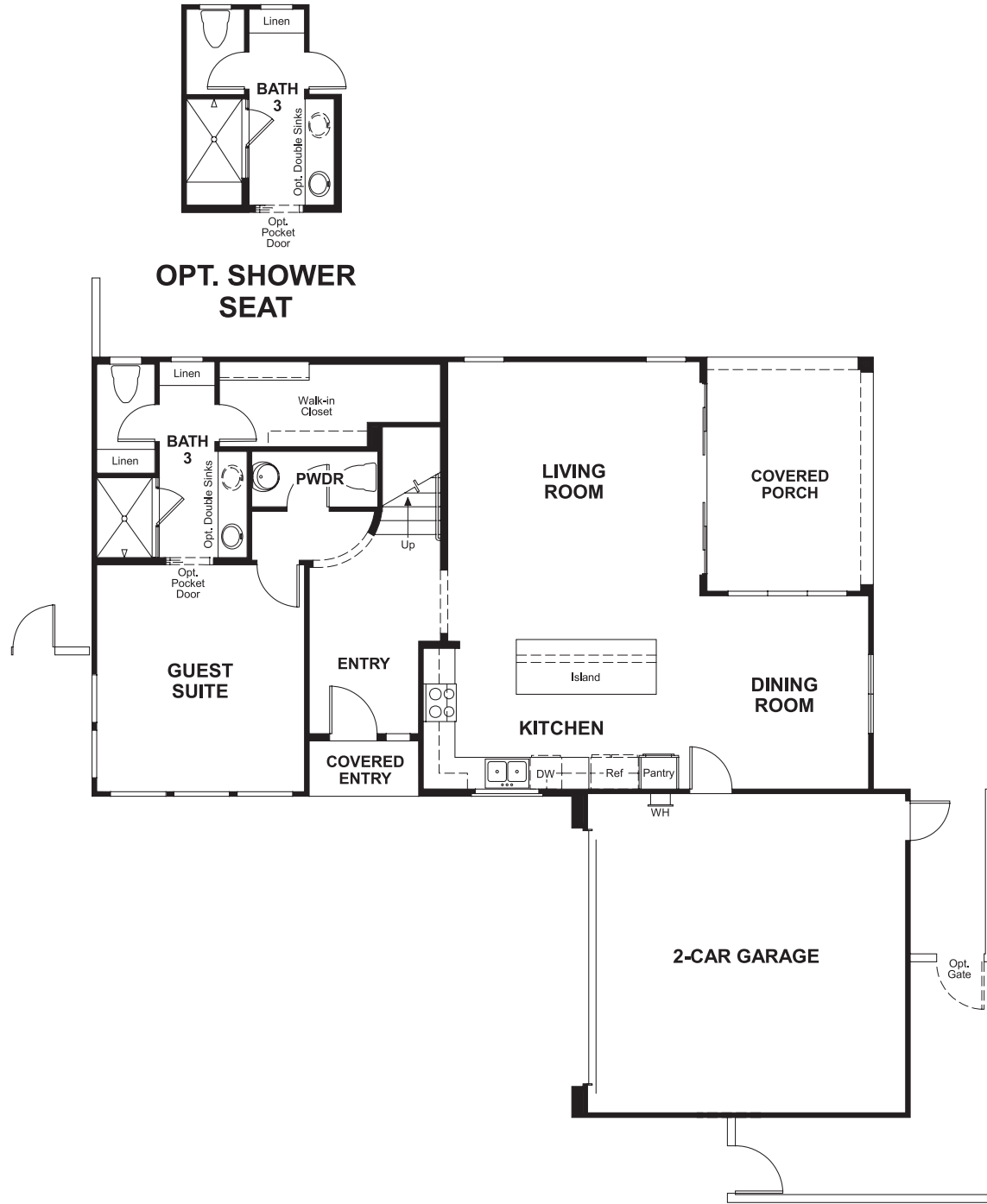
HOME GALLERY

5171 California Avenue
Irvine, CA 92617
800-852-9714



RICHMONDAMERICAN.COM

FLOOR PLAN
MAIN FLOOR



FLOOR PLAN
SECOND FLOOR

