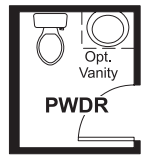


Woodmont Vista
OSCAR

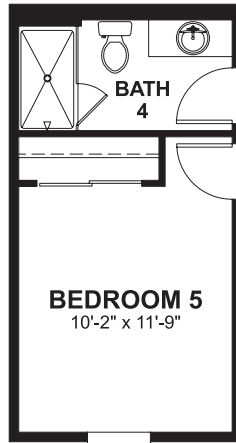
Approx. square feet: 3,300
Stories: 2
Bedrooms: 4 - 6

Garage: 3-car
Plan Number: W626

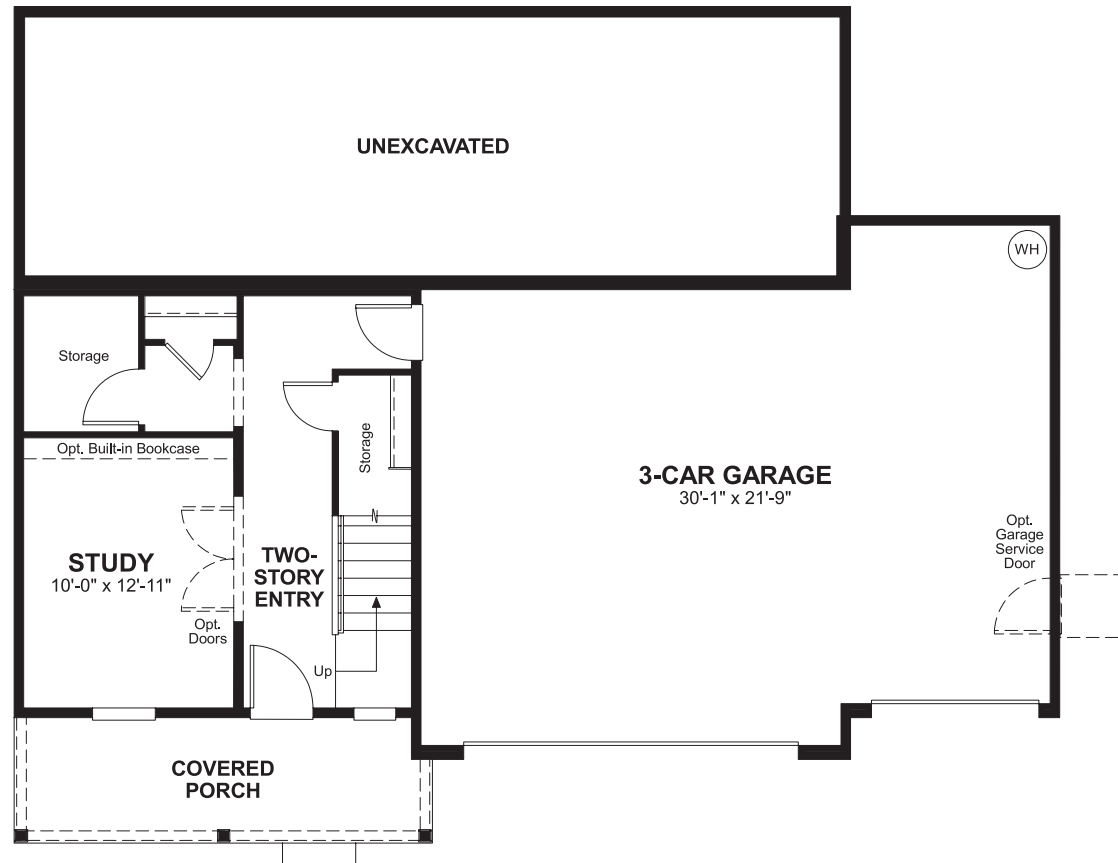
Floor Plan
Lower Floor



OPT. POWDER ROOM



**OPT. BEDROOM 5/
BATH 4**



Woodmont Vista
OSCAR

Approx. square feet: 3,300
Stories: 2
Bedrooms: 4 - 6
Garage: 3-car
Plan Number: W626



Elevation C

The lower floor of the Oscar plan features a 3-car garage, a private study and abundant storage space. The main floor is perfect for gatherings, with a great room, a chef's kitchen with a double-oven and a morning room overlooking the covered patio. There's also a convenient bedroom. Highlights of the upper floor include a loft, which can be optioned as an extra bedroom, and a sophisticated master suite with a deluxe bath.

Available elevations:



Elevation C



Elevation D



Elevation E

COMMUNITY LOCATION
26008 16th Court South
Des Moines, WA 98198
253-235-4570

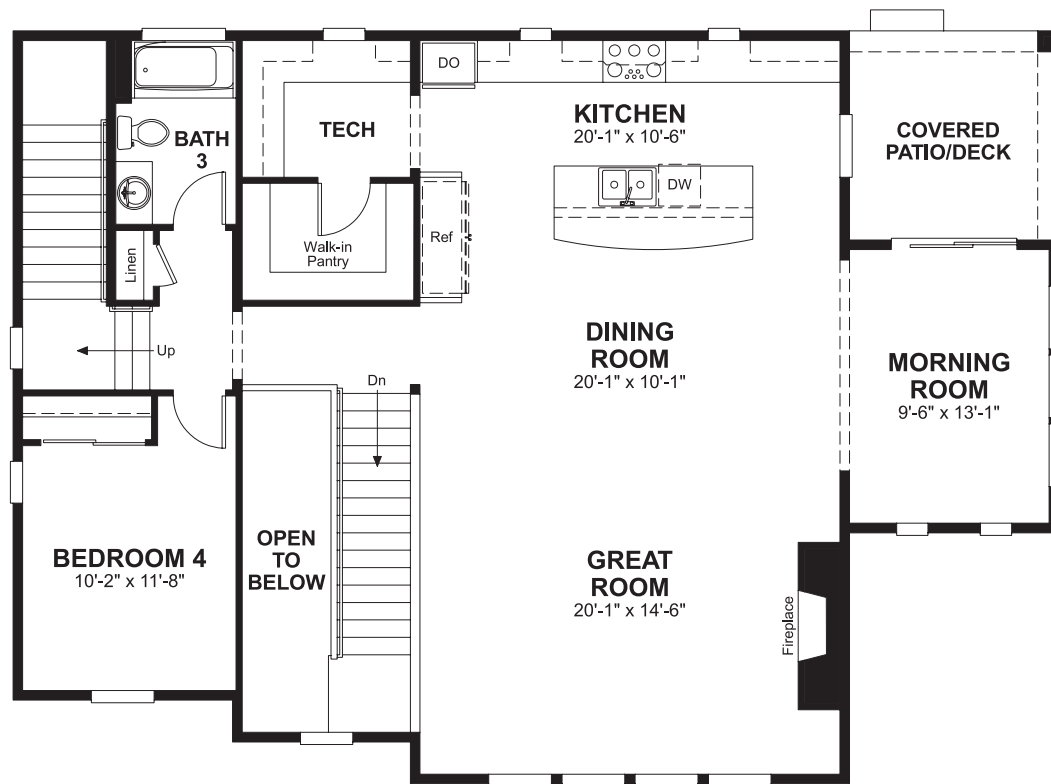
HOME GALLERY
20829 72nd Avenue South, Suite 115
Kent, WA 98032
253-446-7277



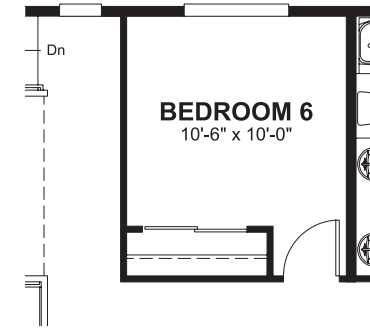
COMMUNITY LOCATION
26008 16th Court South
Des Moines, WA 98198
253-235-4570

HOME GALLERY
20829 72nd Avenue South, Suite 115
Kent, WA 98032
253-446-7277

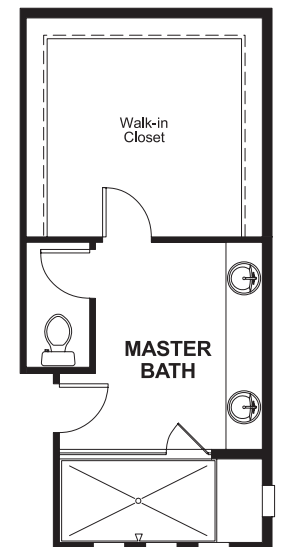
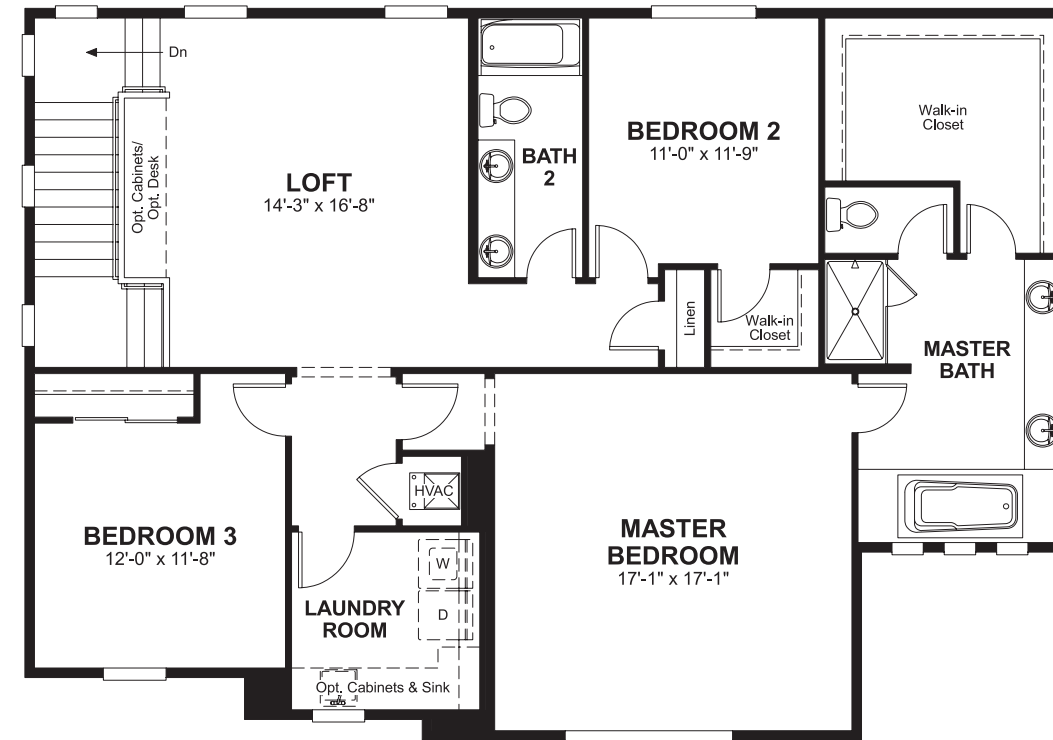
Floor Plan
Main Floor



Floor Plan
Second Floor



OPT. BEDROOM 6



OPT. WALK-IN SHOWER

**THIS PLAN'S PROJECTED
HERS® INDEX = 64***
Projected Rating Based on Plans – Field Confirmation Required

How does this floor plan rate?
Take a look: **100** = Standard new home* **130** = Typical resale home**
The lower the number, the better! Refer to the RESNET® HERS index brochure or go to www.RESNET.us for details.

What's a HERS® Index? HERS stands for Home Energy Rating System, a system created by RESNET® to measure home energy efficiency.[^]
A Projected HERS index or rating is a computer simulation performed prior to construction by a third-party HERS rater using RESNET-accredited rating software, rated feature and specification data derived from home plans, features and specifications, and other data selected or assumed by the rater. The projected HERS index is approximate and is subject to change without notice. Actual results will vary.

*This information is presented for education purposes only. The HERS index for a confirmed rating will be determined by a third-party HERS rater based on data gathered from on-site observations and, if required, testing of rated features for a home as featured, optioned, located, oriented and/or built.
+Standard new home is based on the RESNET® Reference Home definition with a HERS® index of 100 (based on the 2006 International Energy Conservation Code).
++Typical resale home is based on the U.S. Department of Energy definition with a HERS® index of 130.

[^]RESNET® has developed the HERS® index to indicate the comparative efficiencies of homes. It is no guarantee that energy efficiencies will be achieved.