

PAIGE



Elevation A

Approx. square feet: 2,450
Stories: 1
Bedrooms: 3 - 5
Garage: 2- to 3-car
Plan Number: F24P

The Paige boasts a beautiful ranch-style layout that's distinguished by the great room with adjacent kitchen and breakfast nook, the master suite with walk-in closet and optional deluxe bath, the study and the expansive garage. Exciting options like a covered patio, gourmet kitchen, dining room or extra bedroom complete this elegant home.

Available elevations:



Elevation A



Elevation B



Elevation C - Shown w/ optional stone



Elevation D



Elevation E



Elevation F

HOME GALLERY

762 South Northlake Boulevard, #1004
 Altamonte Springs, FL 32701
 321-418-3095



HOME GALLERY

762 South Northlake Boulevard, #1004
 Altamonte Springs, FL 32701
 321-418-3095

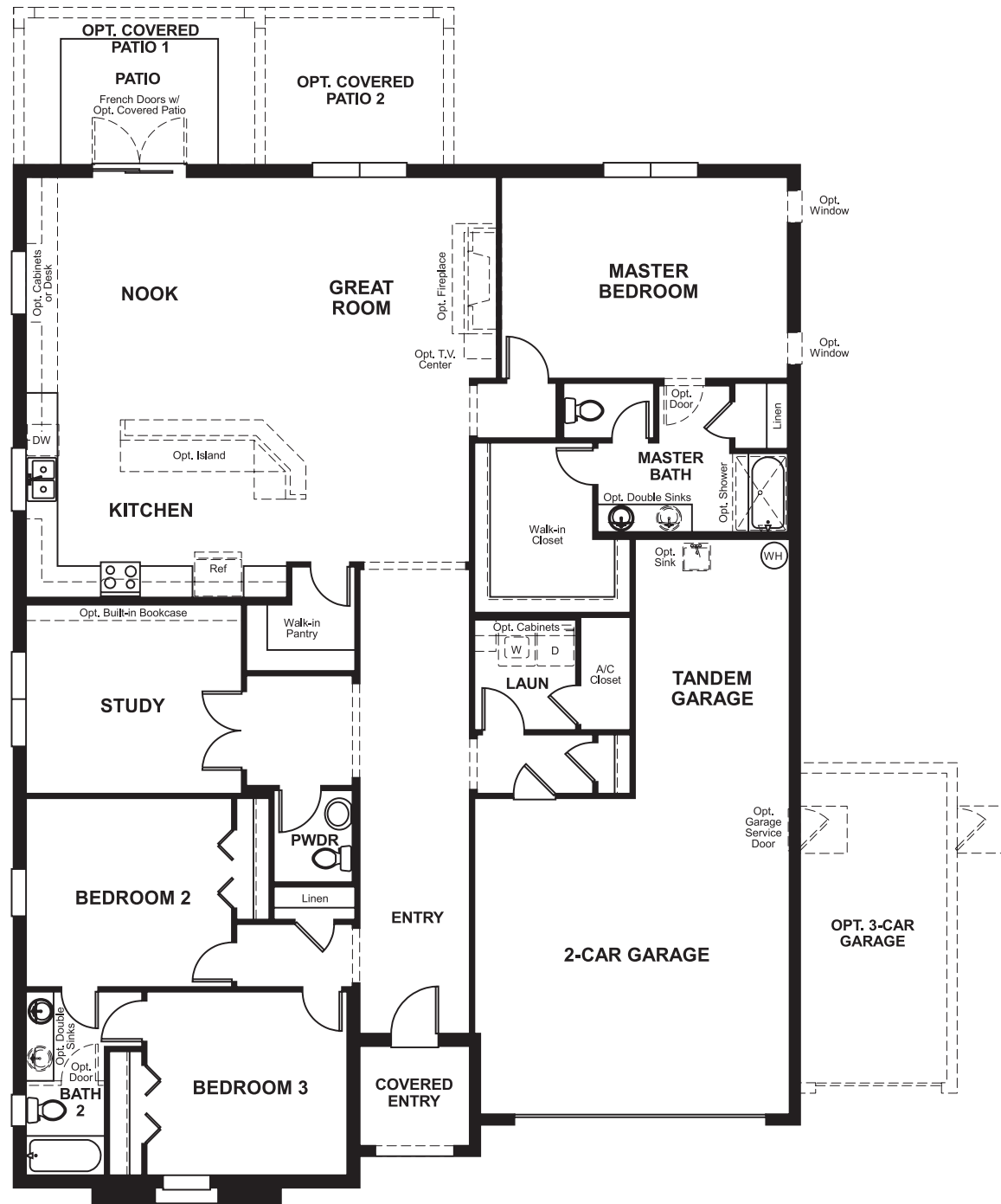


PAIGE

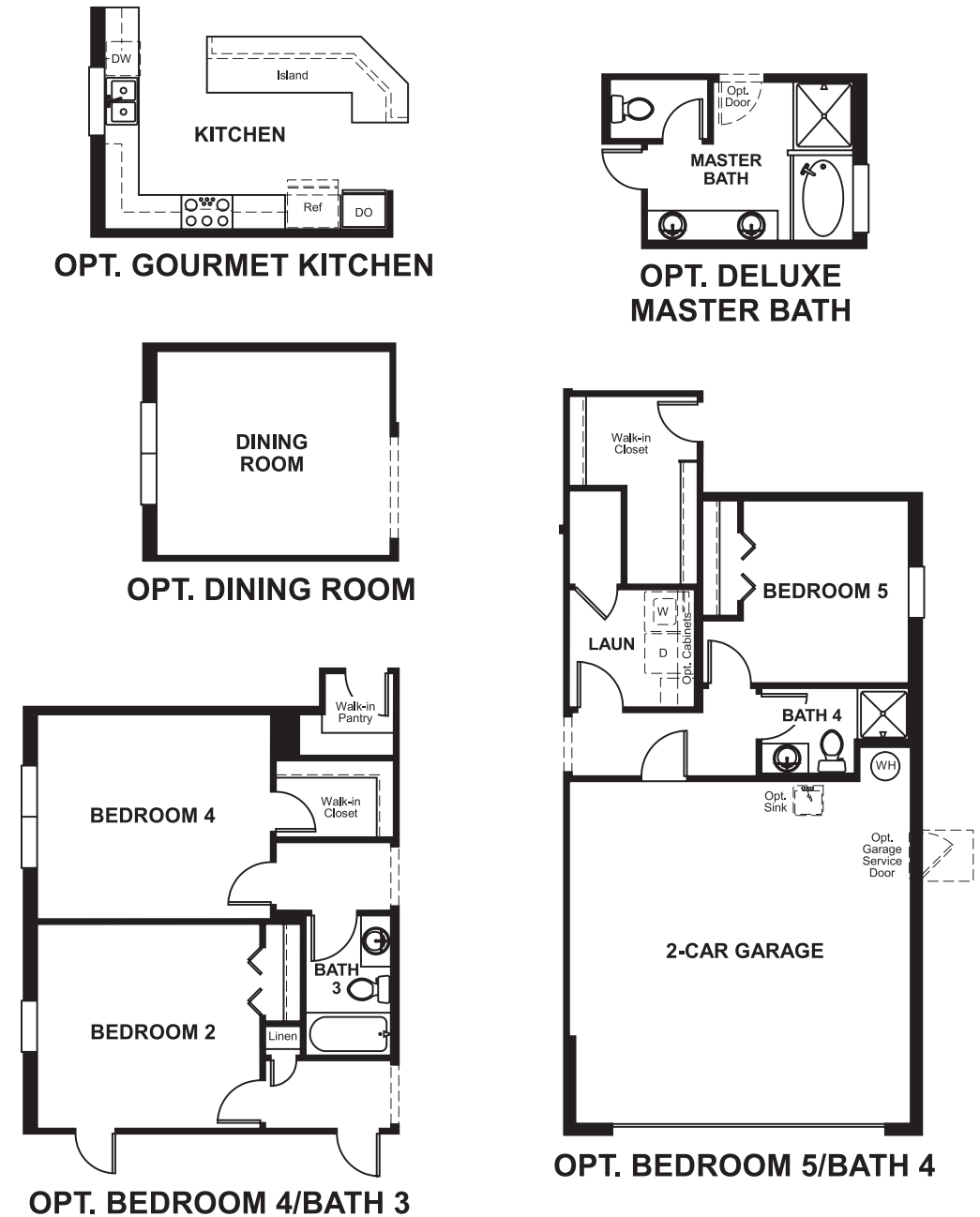
Approx. square feet: 2,450
Stories: 1
Bedrooms: 3 - 5

Garage: 2- to 3-car
Plan Number: F24P

Floor Plan
Main Floor



Floor Plan
Main Floor Options



**THIS PLAN'S PROJECTED
HERS® INDEX = 66 ***
Projected Rating Based on Plans – Field Confirmation Required

How does this floor plan rate?
Take a look: **100** = Standard new home* **130** = Typical resale home**
The lower the number, the better! Refer to the RESNET® HERS index brochure or go to www.RESNET.us for details.

What's a HERS® Index? HERS stands for Home Energy Rating System, a system created by RESNET® to measure home energy efficiency.[^]
A Projected HERS index or rating is a computer simulation performed prior to construction by a third-party HERS rater using RESNET-accredited rating software, rated feature and specification data derived from home plans, features and specifications, and other data selected or assumed by the rater. The projected HERS index is approximate and is subject to change without notice. Actual results will vary.

*This information is presented for education purposes only. The HERS index for a confirmed rating will be determined by a third-party HERS rater based on data gathered from on-site observations and, if required, testing of rated features for a home as featured, optioned, located, oriented and/or built.
+Standard new home is based on the RESNET® Reference Home definition with a HERS® index of 100 (based on the 2006 International Energy Conservation Code).
++Typical resale home is based on the U.S. Department of Energy definition with a HERS® index of 130.

[^]RESNET® has developed the HERS® index to indicate the comparative efficiencies of homes. It is no guarantee that energy efficiencies will be achieved.