

Steeplechase
PAIGE



Elevation A

Approx. square feet: 2,450
Stories: 1
Bedrooms: 3
Garage: 3-car tandem
Plan Number: S24P

The ranch-style Paige plan is ideal for entertaining. It offers a massive great room that opens to an inviting kitchen with a walk-in pantry, breakfast nook and optional center island. When it's time for rest and relaxation, retreat to the lavish master suite with private bath and walk-in closet. Personalize this versatile plan with an optional bedroom or dining room in lieu of the study.

Available elevations:



Elevation A



Elevation B



Elevation C

COMMUNITY LOCATION

4665 Formosa Way
 Perris, CA 92551
 800-852-9714

HOME GALLERY

5171 California Avenue, Suite 110
 Irvine, CA 92617
 800-852-9714



COMMUNITY LOCATION

4665 Formosa Way
 Perris, CA 92551
 800-852-9714

HOME GALLERY

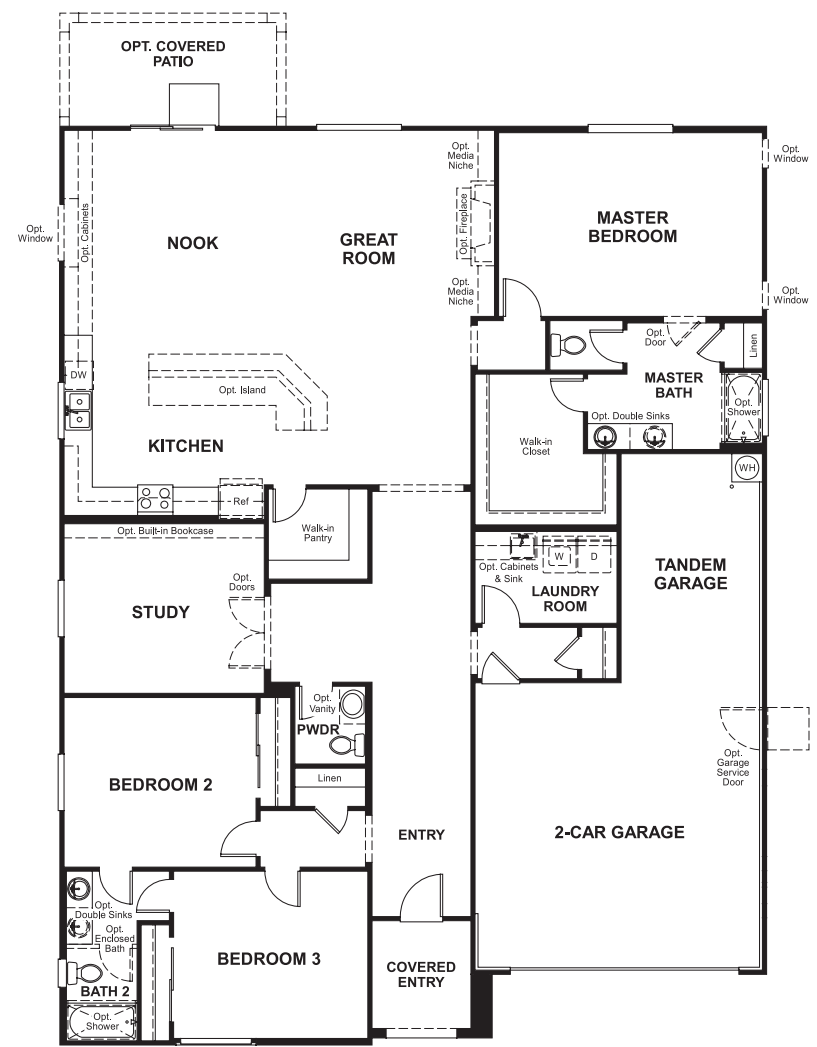
5171 California Avenue, Suite 110
 Irvine, CA 92617
 800-852-9714

Steeplechase
PAIGE

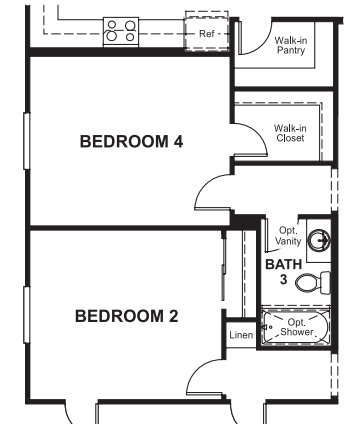
Approx. square feet: 2,450
Stories: 1
Bedrooms: 3

Garage: 3-car tandem
Plan Number: S24P

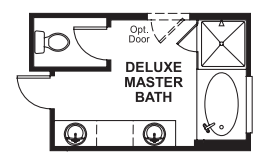
Floor Plan
Main Floor



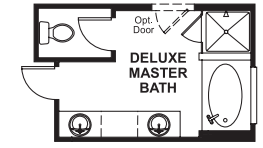
Floor Plan
Main Floor Options



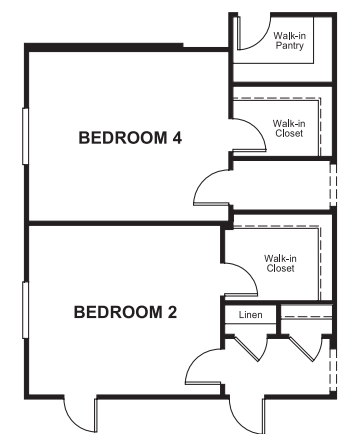
OPT. BEDROOM 4/BATH 3



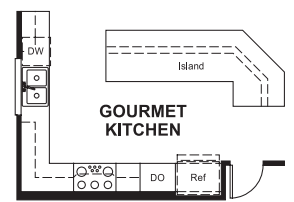
OPT. DELUXE MASTER BATH



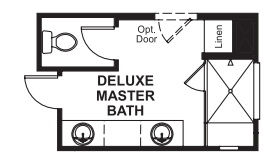
OPT. DELUXE MASTER BATH W/ TILE UPGRADE



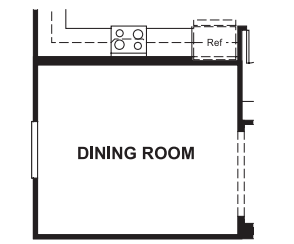
OPT. BEDROOM 4 W/ OPT. BEDROOM 5/BATH 4



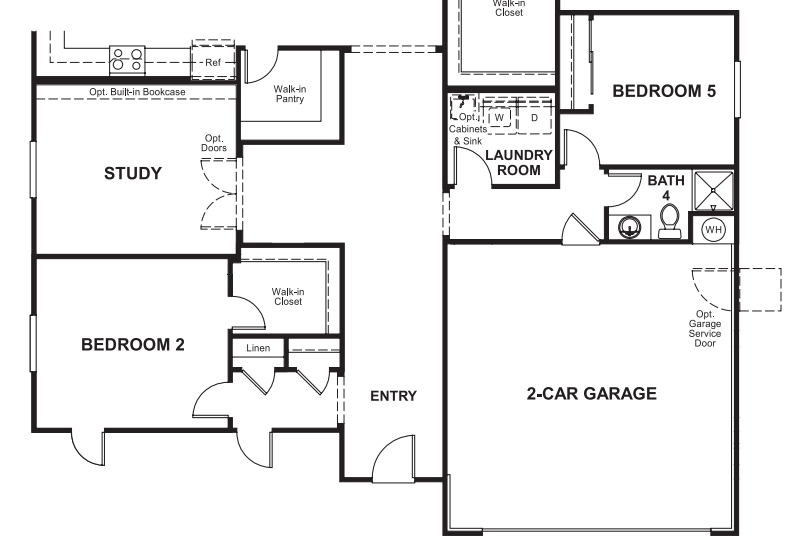
OPT. GOURMET KITCHEN



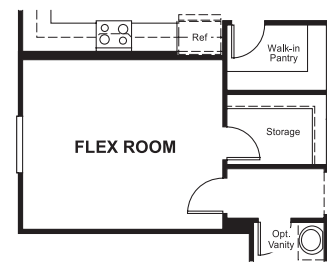
OPT. DELUXE MASTER BATH W/ WALK-IN TILE SHOWER



OPT. DINING ROOM



OPT. BEDROOM 5/BATH 4



OPT. FLEX ROOM

THIS PLAN'S PROJECTED HERS® INDEX = 75*
Projected Rating Based on Plans – Field Confirmation Required

How does this floor plan rate?
Take a look: **100** = Standard new home* **130** = Typical resale home**
The lower the number, the better! Refer to the RESNET® HERS index brochure or go to www.RESNET.us for details.

What's a HERS® Index? HERS stands for Home Energy Rating System, a system created by RESNET® to measure home energy efficiency.[^]
A Projected HERS index or rating is a computer simulation performed prior to construction by a third-party HERS rater using RESNET-accredited rating software, rated feature and specification data derived from home plans, features and specifications, and other data selected or assumed by the rater. The projected HERS index is approximate and is subject to change without notice. Actual results will vary.

*This information is presented for education purposes only. The HERS index for a confirmed rating will be determined by a third-party HERS rater based on data gathered from on-site observations and, if required, testing of rated features for a home as featured, optioned, located, oriented and/or built.
+Standard new home is based on the RESNET® Reference Home definition with a HERS® index of 100 (based on the 2006 International Energy Conservation Code).
**Typical resale home is based on the U.S. Department of Energy definition with a HERS® index of 130.

[^]RESNET® has developed the HERS® index to indicate the comparative efficiencies of homes. It is no guarantee that energy efficiencies will be achieved.