

Shearwater
PAIGE



Elevation K

Approx. square feet: 2,450

Stories: 1

Bedrooms: 3 - 5

Garage: 2-car

Plan Number: J24P

The spacious ranch-style Paige plan has a large open great room, nook and gourmet kitchen with walk-in pantry. When it's time to work or relax, retreat to the private study or onto the optional covered porch. A Jack-and-Jill bath, two inviting bedrooms and a luxurious master suite are also included.

Available elevations:



Elevation D



Elevation K



Elevation L

COMMUNITY LOCATION

65 Palisade Drive
St. Augustine, FL 32092
904-541-2555

HOME GALLERY

1560 Wells Road, Building A
Orange Park, FL 32073
800-221-3014



COMMUNITY LOCATION

65 Palisade Drive
St. Augustine, FL 32092
904-541-2555

HOME GALLERY

1560 Wells Road, Building A
Orange Park, FL 32073
800-221-3014

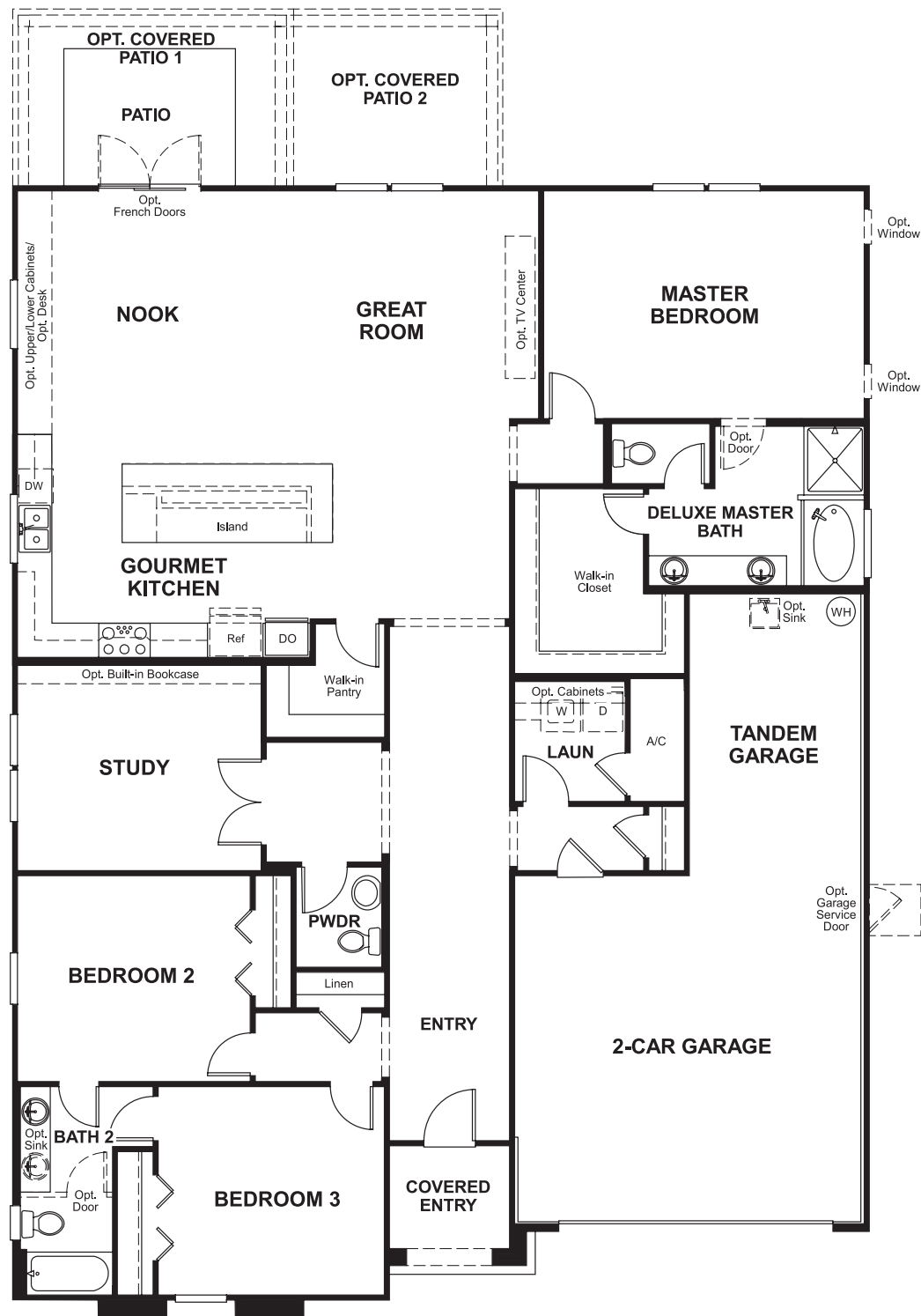


Shearwater
PAIGE

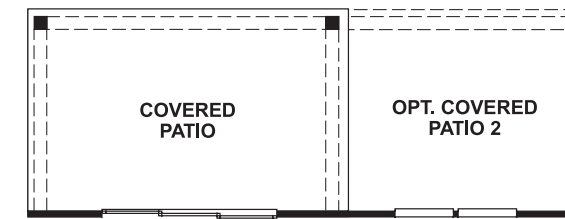
Approx. square feet: 2,450
Stories: 1
Bedrooms: 3 - 5

Garage: 2-car
Plan Number: J24P

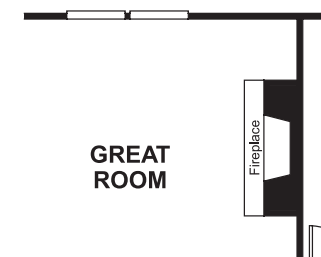
Floor Plan
Main Floor



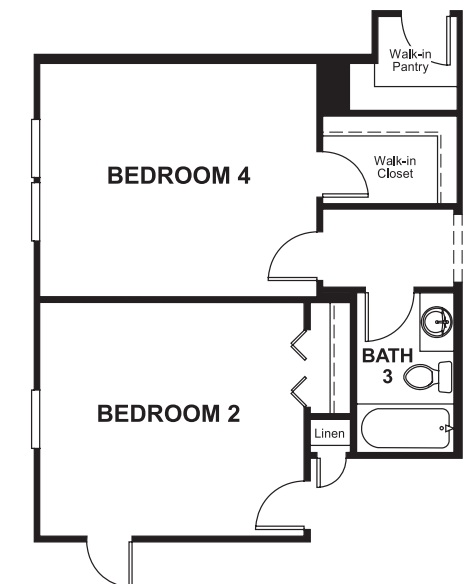
Floor Plan
Main Floor Options



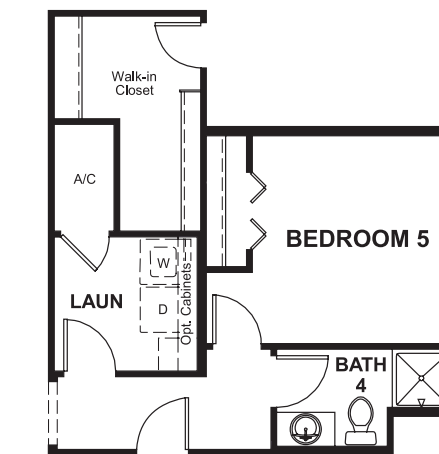
OPT. MULTI-SLIDE DOOR



OPT. FIREPLACE



OPT. BEDROOM 4/BATH 3



OPT. BEDROOM 5/BATH 4



OPT. DINING ROOM

THIS PLAN'S PROJECTED HERS® INDEX = 62*
Projected Rating Based on Plans – Field Confirmation Required

How does this floor plan rate?
Take a look: **100** = Standard new home* **130** = Typical resale home**
The lower the number, the better! Refer to the RESNET® HERS index brochure or go to www.RESNET.us for details.

What's a HERS® Index? HERS stands for Home Energy Rating System, a system created by RESNET® to measure home energy efficiency.[^]
A Projected HERS index or rating is a computer simulation performed prior to construction by a third-party HERS rater using RESNET-accredited rating software, rated feature and specification data derived from home plans, features and specifications, and other data selected or assumed by the rater. The projected HERS index is approximate and is subject to change without notice. Actual results will vary.

*This information is presented for education purposes only. The HERS index for a confirmed rating will be determined by a third-party HERS rater based on data gathered from on-site observations and, if required, testing of rated features for a home as featured, optioned, located, oriented and/or built.
+Standard new home is based on the RESNET® Reference Home definition with a HERS® index of 100 (based on the 2006 International Energy Conservation Code).
**Typical resale home is based on the U.S. Department of Energy definition with a HERS® index of 130.

[^]RESNET® has developed the HERS® index to indicate the comparative efficiencies of homes. It is no guarantee that energy efficiencies will be achieved.