

Creekside at The Ranch
PAIGE



Elevation A

Approx. square feet: 2,450
Stories: 1
Bedrooms: 3 - 5
Garage: 2- to 3-car
Plan Number: S24P

The ranch-style Paige plan is ideal for entertaining, with an open great room with an optional fireplace and a spacious kitchen with a walk-in pantry, center island, nook and optional gourmet features. When it's time to work or relax, retreat to the private study or optional covered patio. Three inviting bedrooms, including an elegant master suite with an expansive walk-in closet, are also included. Additional options include a formal dining room or bedroom in lieu of the study.

Available elevations:



Elevation A



Elevation B



Elevation C

COMMUNITY LOCATION
22744 Rolling Brook Lane
Wildomar, CA 92595
800-852-9714

HOME GALLERY
5171 California Avenue
Irvine, CA 92617
800-852-9714



COMMUNITY LOCATION
22744 Rolling Brook Lane
Wildomar, CA 92595
800-852-9714

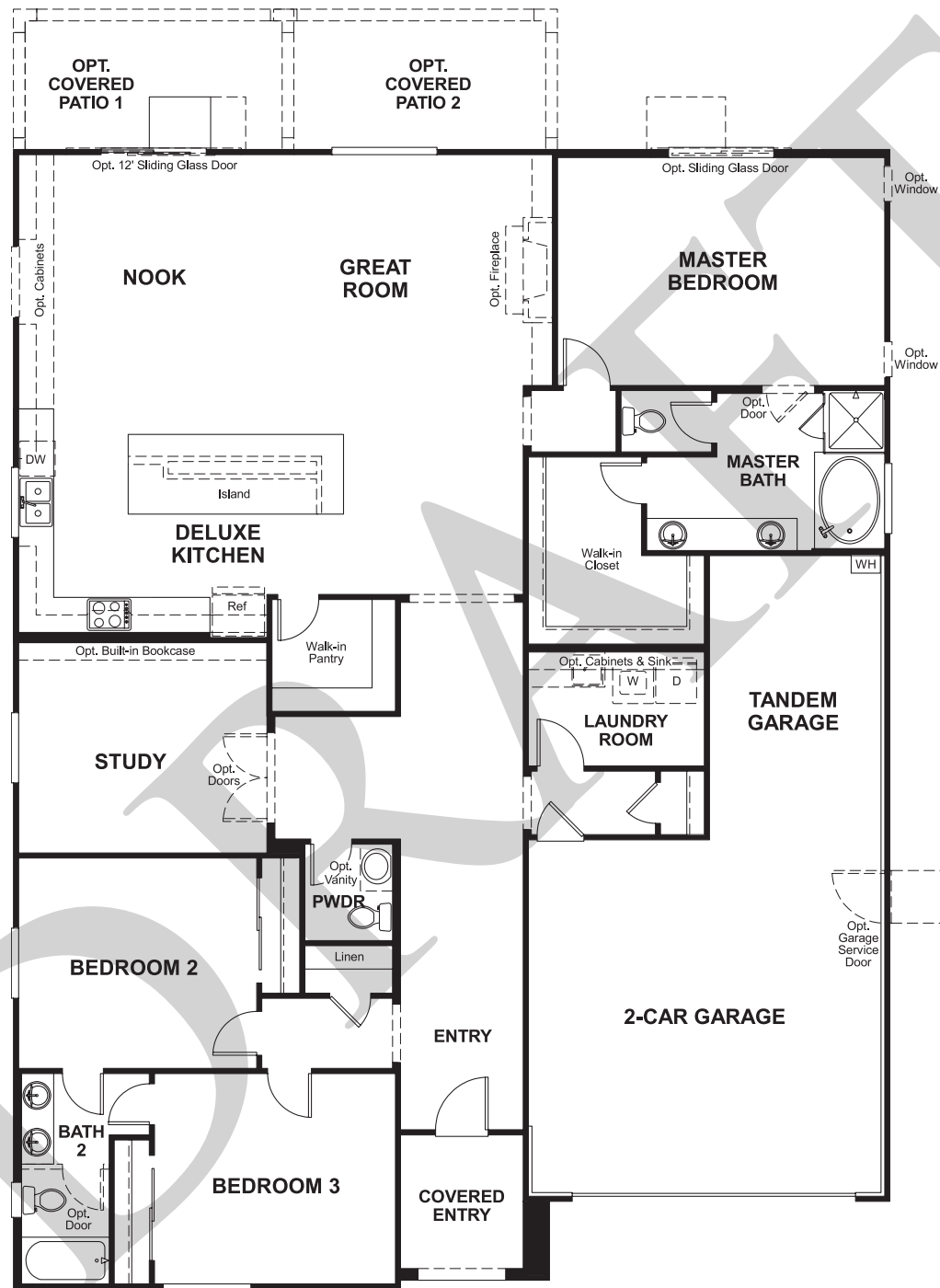
HOME GALLERY
5171 California Avenue
Irvine, CA 92617
800-852-9714

Creekside at The Ranch
PAIGE

Approx. square feet: 2,450
Stories: 1
Bedrooms: 3 - 5

Garage: 2- to 3-car
Plan Number: S24P

Floor Plan
Main Floor



Floor Plan
Main Floor Options

