

Sycamore at Spencer's Crossing
PALMER



Elevation A

Approx. square feet: 3,150
Stories: 2
Bedrooms: 5 - 6
Garage: 2- to 3-car
Plan Number: S696

Thoughtful design details, like a courtyard entry, a main-floor bedroom and full bath, a private study, and the master bedroom's expansive walk-in closet make the palmer plan an exceptional place to call home. Personalize with a gourmet kitchen, deluxe master bath, great room fireplace, a second-floor deck, outdoor living features and a guest suite in lieu of the second garage.

Available elevations:



Elevation A



Elevation B



Elevation C

COMMUNITY LOCATION

35355 Weather Way
 Murrieta, CA 92563
 909-579-3288

HOME GALLERY

5171 California Ave
 Irvine, CA 92617
 949-467-2600



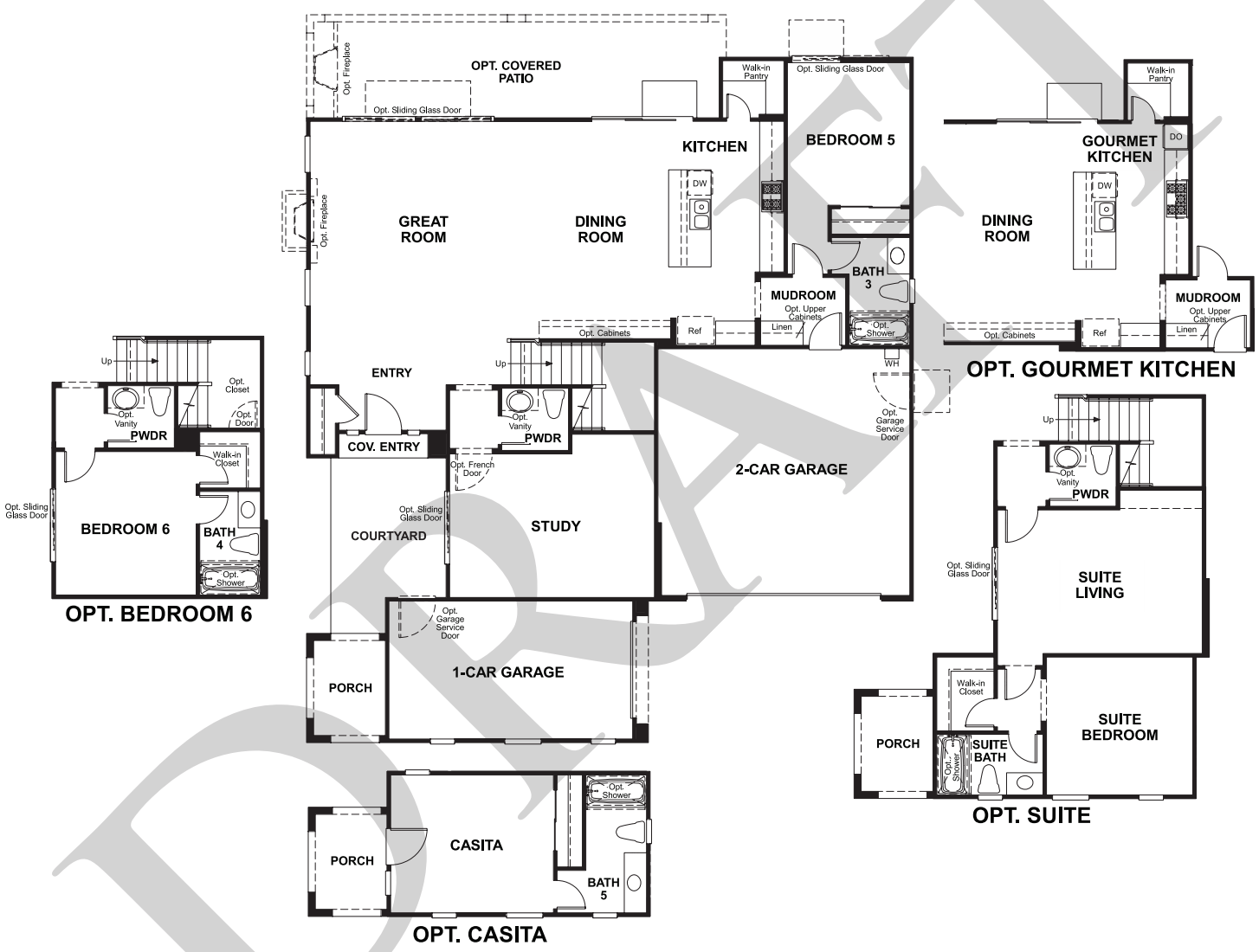
COMMUNITY LOCATION

35355 Weather Way
 Murrieta, CA 92563
 909-579-3288

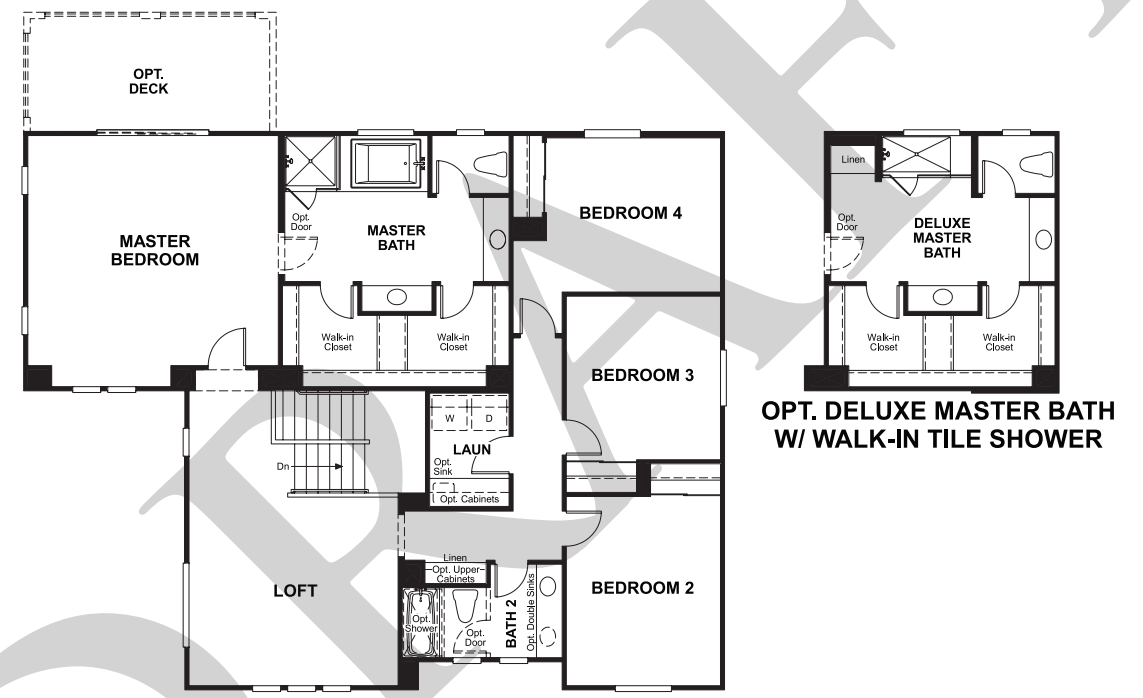
HOME GALLERY

5171 California Ave
 Irvine, CA 92617
 949-467-2600

Floor Plan
Main Floor



Floor Plan
Second Floor



THIS PLAN'S PROJECTED
HERS® INDEX = 72 *
Projected Rating Based on Plans – Field Confirmation Required

How does this floor plan rate?
Take a look: **100** = Standard new home* **130** = Typical resale home**
The lower the number, the better! Refer to the RESNET® HERS index brochure or go to www.RESNET.us for details.

What's a HERS® Index? HERS stands for Home Energy Rating System, a system created by RESNET® to measure home energy efficiency.[^]
A Projected HERS index or rating is a computer simulation performed prior to construction by a third-party HERS rater using RESNET-accredited rating software, rated feature and specification data derived from home plans, features and specifications, and other data selected or assumed by the rater. The projected HERS index is approximate and is subject to change without notice. Actual results will vary.

*This information is presented for education purposes only. The HERS index for a confirmed rating will be determined by a third-party HERS rater based on data gathered from on-site observations and, if required, testing of rated features for a home as featured, optioned, located, oriented and/or built.
+Standard new home is based on the RESNET® Reference Home definition with a HERS® index of 100 (based on the 2006 International Energy Conservation Code).
++Typical resale home is based on the U.S. Department of Energy definition with a HERS® index of 130.

[^]RESNET® has developed the HERS® index to indicate the comparative efficiencies of homes. It is no guarantee that energy efficiencies will be achieved.