

Lafayette at Stonegate
PARIS



Elevation A

Available elevations:



Elevation A



Elevation C



Elevation E

Approx. square feet: 2,400

Stories: 2

Bedrooms: 3 - 4

Garage: 2-car

The elegant Paris plan greets guests with a grand two-story entry and continues to impress with a formal dining room, an airy great room and a spacious kitchen with a center island and optional pro-lite features. You'll also appreciate the convenient main-floor bedroom, full bath and relaxing covered patio, which can be optioned as a conservatory. The upstairs features three generous bedrooms, including a luxurious master suite with an optional deluxe bath.



Villages of Irvine[®]

Masterfully Planned by the Irvine Company

"Masterfully Planned by the Irvine Company" means that the Irvine Company created the master land plan for all Irvine Company communities. The "master land plan" includes the overall entitlement and design of each community but does not include the design, construction and sale of homes. The design, construction and sale of homes is the sole responsibility of the community builders. The Irvine company is not designing, constructing or offering homes for sale in any community.

COMMUNITY LOCATION

54 Cummings
Irvine, CA 92620
800-852-9714

HOME GALLERY

5171 California Avenue
Irvine, CA 92617
800-852-9714



COMMUNITY LOCATION

54 Cummings
Irvine, CA 92620
800-852-9714

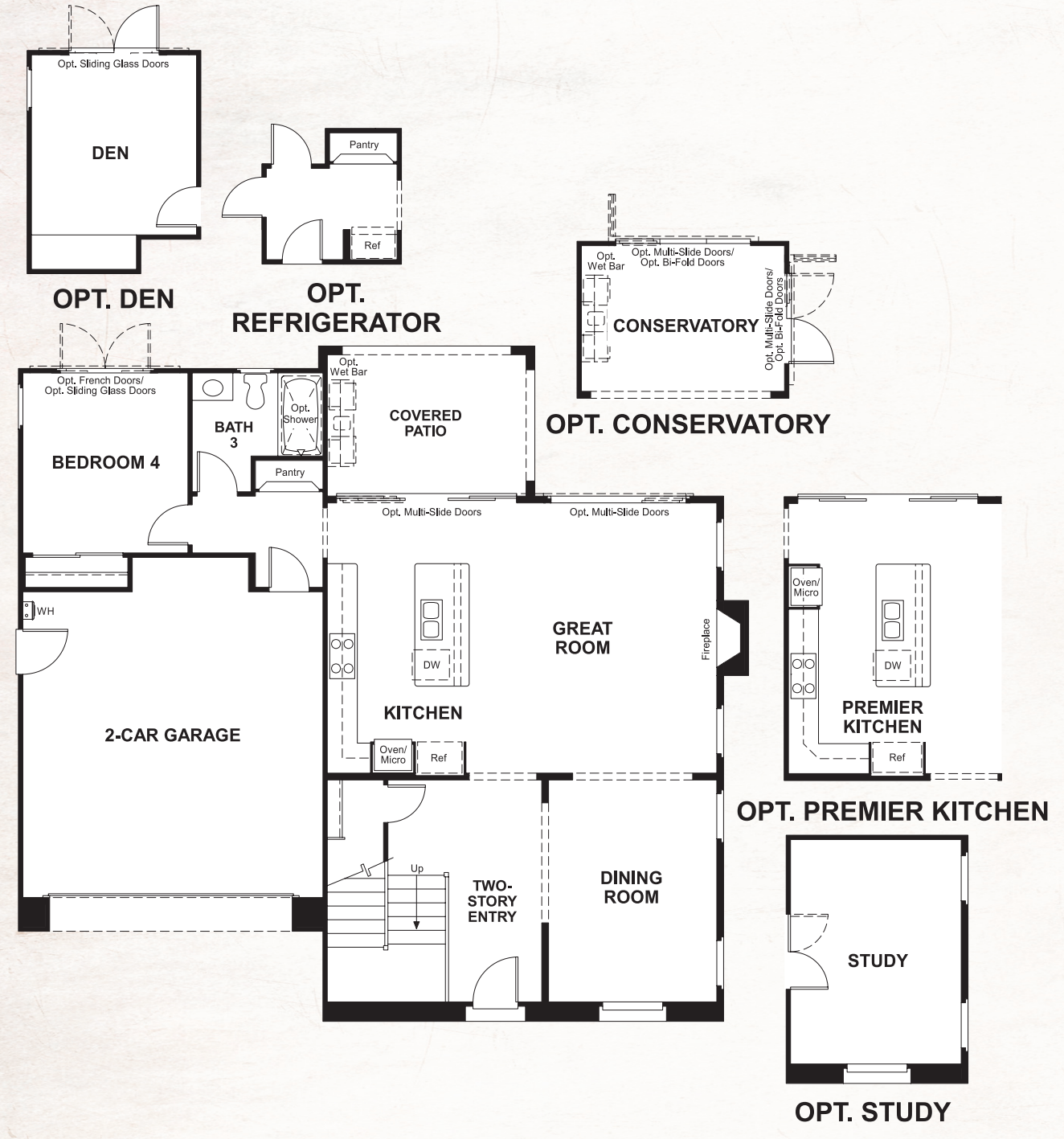
HOME GALLERY

5171 California Avenue
Irvine, CA 92617
800-852-9714

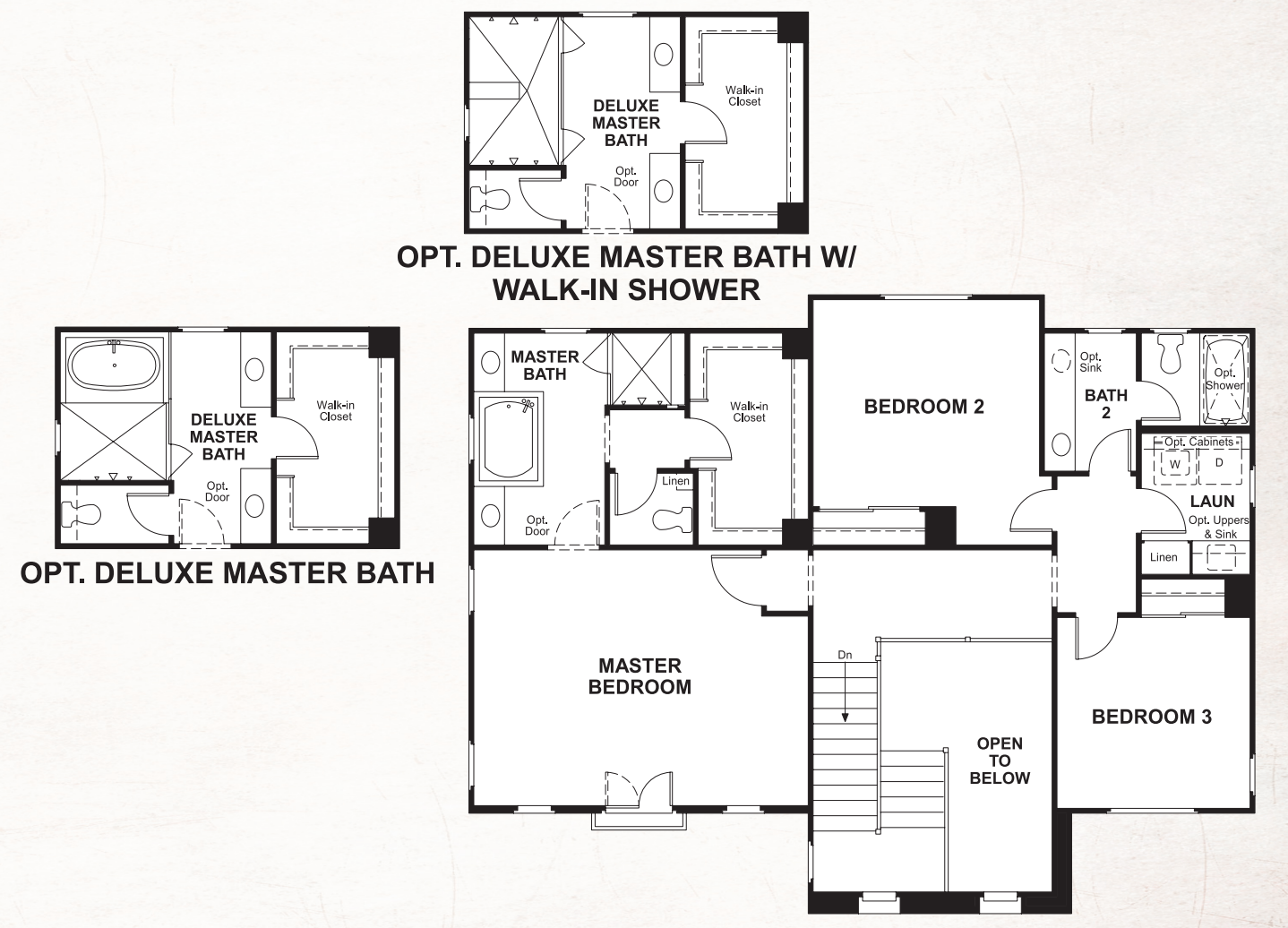
Lafayette at Stonegate
PARIS

Approx. square feet: 2,400 **Bedrooms: 3 - 4**
Stories: 2 **Garage: 2-car**

Floor plan
Main Floor



Floor plan
Second Floor



THIS PLAN'S PROJECTED HERS® INDEX = 70*
Projected Rating Based on Plans – Field Confirmation Required

How does this floor plan rate?
Take a look: **100** = Standard new home* **130** = Typical resale home**
The lower the number, the better! Refer to the RESNET® HERS index brochure or go to www.RESNET.us for details.

What's a HERS® Index? HERS stands for Home Energy Rating System, a system created by RESNET® to measure home energy efficiency.[^]
A Projected HERS index or rating is a computer simulation performed prior to construction by a third-party HERS rater using RESNET-accredited rating software, rated feature and specification data derived from home plans, features and specifications, and other data selected or assumed by the rater. The projected HERS index is approximate and is subject to change without notice. Actual results will vary.

*This information is presented for education purposes only. The HERS index for a confirmed rating will be determined by a third-party HERS rater based on data gathered from on-site observations and, if required, testing of rated features for a home as featured, optioned, located, oriented and/or built.
+Standard new home is based on the RESNET® Reference Home definition with a HERS® index of 100 (based on the 2006 International Energy Conservation Code).
++Typical resale home is based on the U.S. Department of Energy definition with a HERS® index of 130.

[^]RESNET® has developed the HERS® index to indicate the comparative efficiencies of homes. It is no guarantee that energy efficiencies will be achieved.