

Verona Estates
PARKER



Elevation A

Approx. square feet: 3,150
Stories: 2
Bedrooms: 3 - 6
Garage: 2- to 3-car
Plan Number: L31P

The inspired Parker floor plan offers a large great room with optional fireplace that opens to the kitchen with walk-in pantry. Extra bedrooms can be added in place of the main-floor study and upstairs loft. Or turn the study into a dining room with butler's pantry. A beautiful master suite is standard and includes an attached master bath.

Available elevations:



Elevation A



Elevation B



Elevation C

COMMUNITY LOCATION

7360 Zonal Ave
 Las Vegas, NV 89131
 702-638-4440

HOME GALLERY

7770 South Dean Martin Drive, Suite 308
 Las Vegas, NV 89139
 702-617-8400



COMMUNITY LOCATION

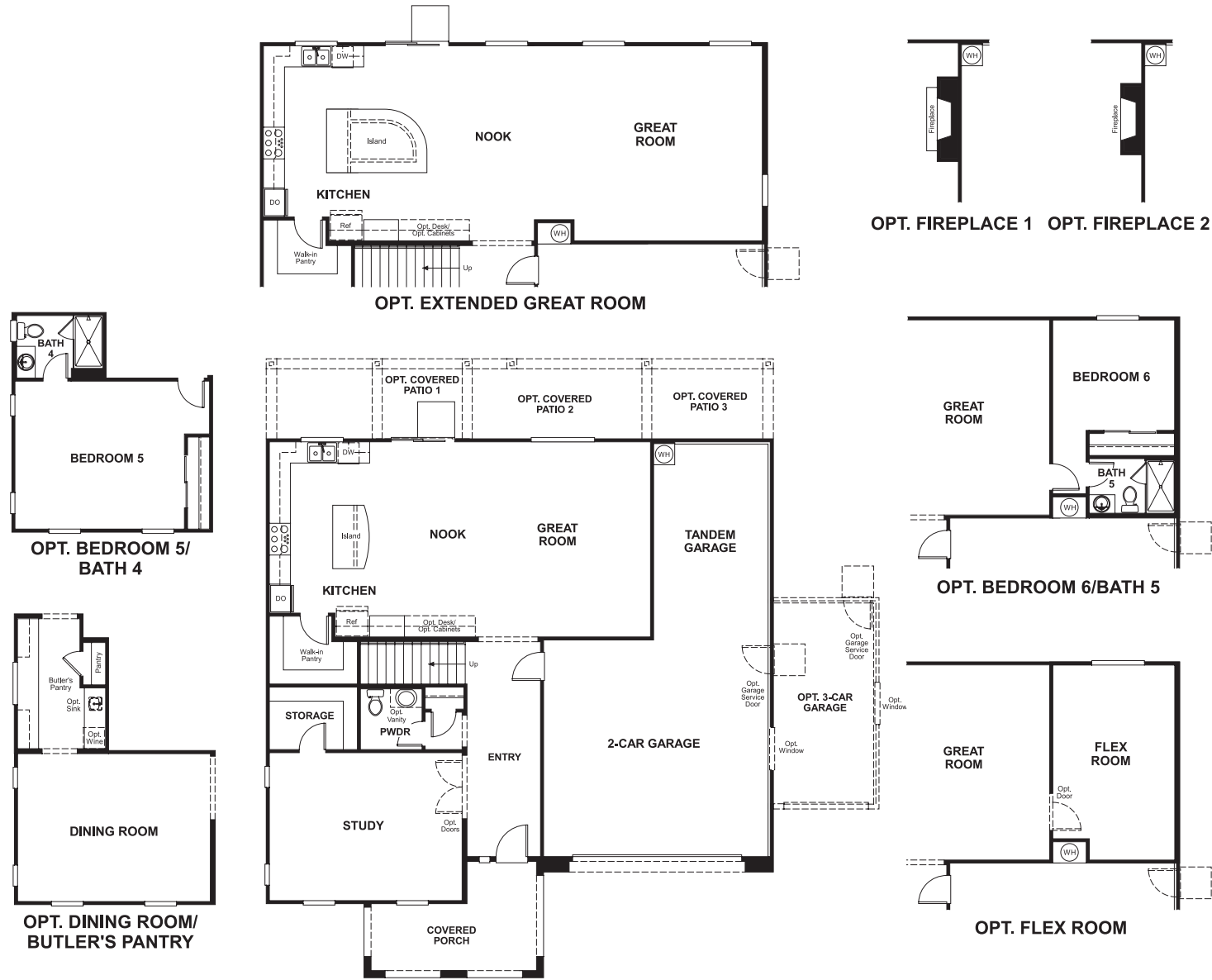
7360 Zonal Ave
 Las Vegas, NV 89131
 702-638-4440

HOME GALLERY

7770 South Dean Martin Drive, Suite 308
 Las Vegas, NV 89139
 702-617-8400



Floor Plan
Main Floor



Floor Plan
Second Floor

