

Gold Ridge (Oliver Canyon)  
**PEYTON**



**Elevation A**

**Approx. square feet:** 3,300  
**Stories:** 2  
**Bedrooms:** 4 - 6  
**Garage:** 4-car tandem  
**Plan Number:** N34P

The thoughtful Peyton plan features a quiet study, a spacious great room and a gourmet kitchen with a generous central island, walk-in pantry and adjacent dining room. The tandem space in the garage can be optioned as a media room or extra bedroom, and you can choose to add an optional covered patio. Upstairs includes a lavish master suite with an oversized walk-in closet and deluxe bath. The loft can be converted to an extra bedroom.

**Available elevations:**



**Elevation A**



**Elevation B**



**Elevation C**

**COMMUNITY LOCATION**  
 5290 Klingsell Place  
 Fairfield, CA 94533  
 707-416-0212

**HOME GALLERY**  
 5274 Klingsell Place  
 Fairfield, CA 94533  
 By Appointment Only



**COMMUNITY LOCATION**  
 5290 Klingsell Place  
 Fairfield, CA 94533  
 707-416-0212

**HOME GALLERY**  
 5274 Klingsell Place  
 Fairfield, CA 94533  
 By Appointment Only

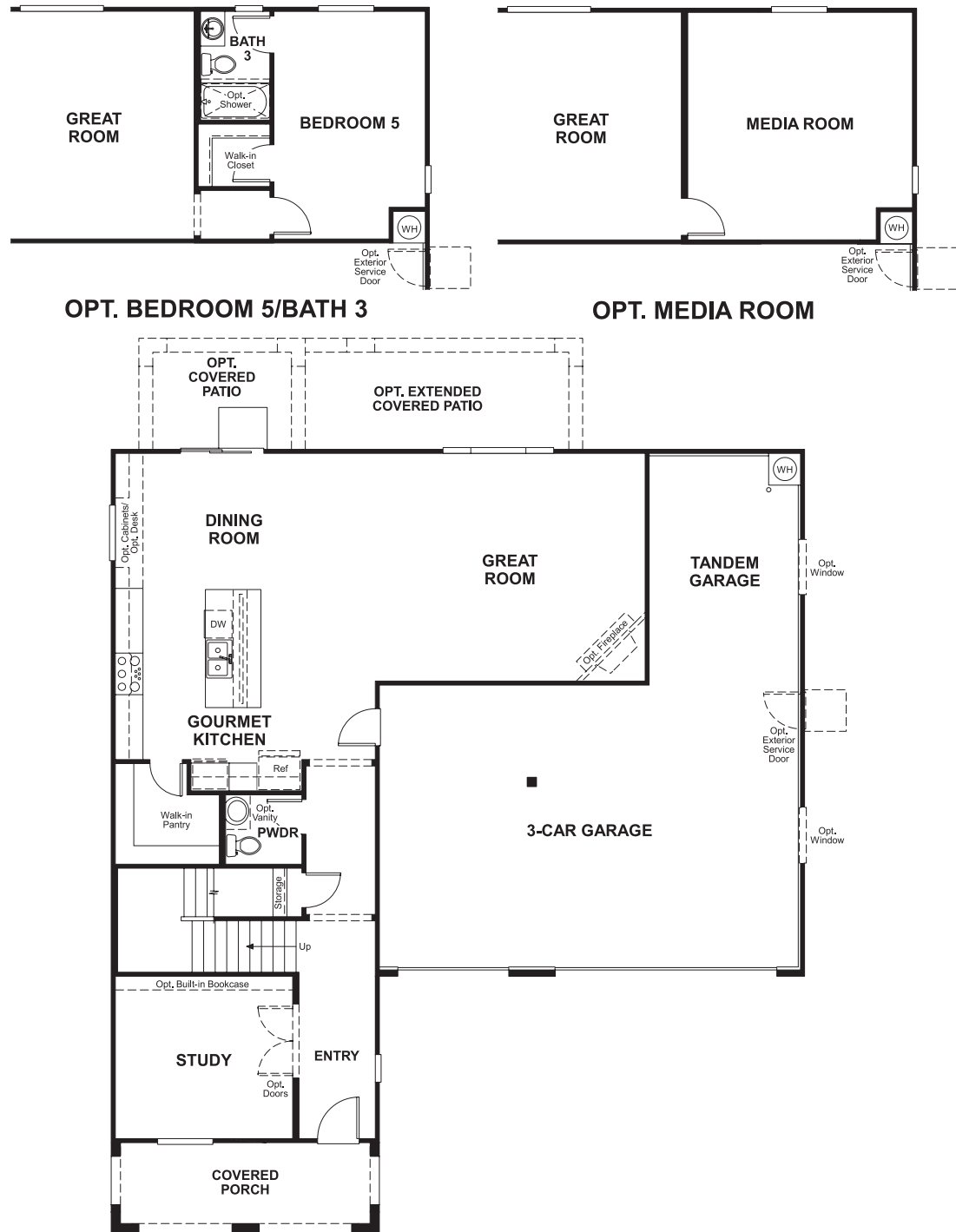


Gold Ridge (Oliver Canyon)  
**PEYTON**

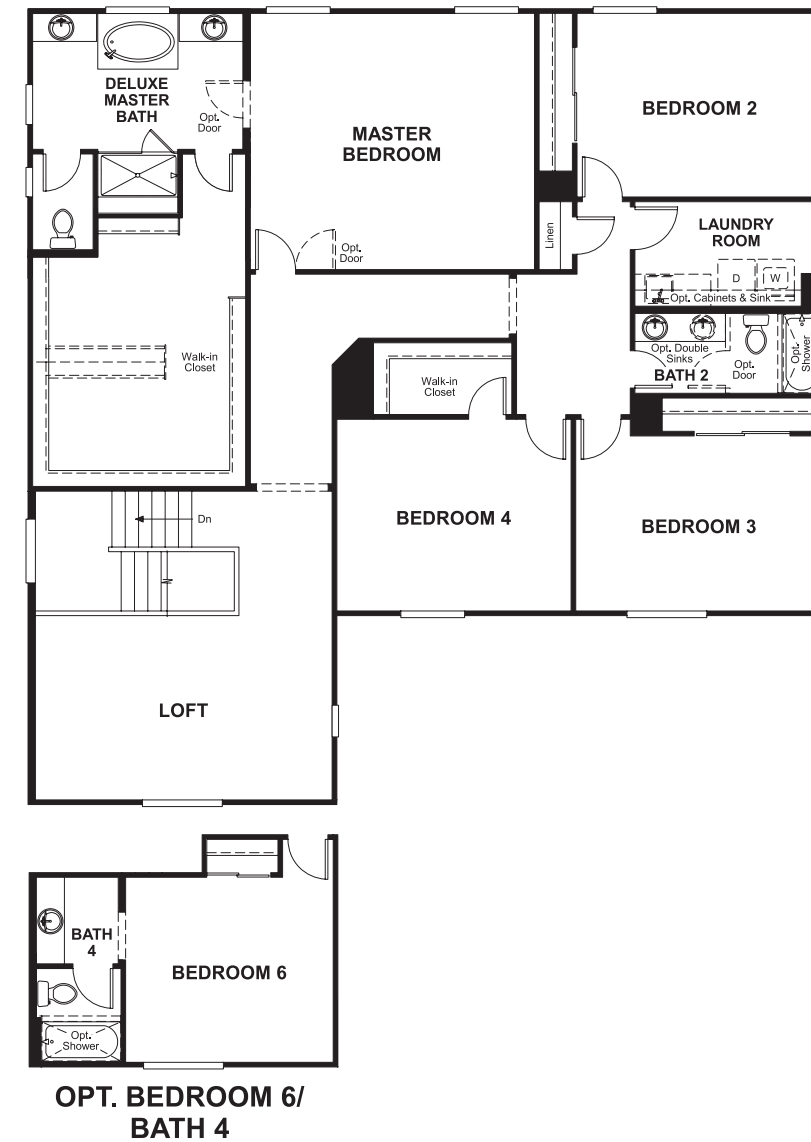
**Approx. square feet:** 3,300  
**Stories:** 2  
**Bedrooms:** 4 - 6

**Garage:** 4-car tandem  
**Plan Number:** N34P

**Floor Plan**  
First Floor



**Floor Plan**  
Second Floor



**THIS PLAN'S PROJECTED  
HERS® INDEX = 72 \***  
Projected Rating Based on Plans – Field Confirmation Required

**How does this floor plan rate?**  
Take a look: **100** = Standard new home\* **130** = Typical resale home\*\*  
The lower the number, the better! Refer to the RESNET® HERS index brochure or go to [www.RESNET.us](http://www.RESNET.us) for details.

**What's a HERS® Index?** HERS stands for Home Energy Rating System, a system created by RESNET® to measure home energy efficiency.<sup>^</sup>  
A Projected HERS index or rating is a computer simulation performed prior to construction by a third-party HERS rater using RESNET-accredited rating software, rated feature and specification data derived from home plans, features and specifications, and other data selected or assumed by the rater. The projected HERS index is approximate and is subject to change without notice. Actual results will vary.

\*This information is presented for education purposes only. The HERS index for a confirmed rating will be determined by a third-party HERS rater based on data gathered from on-site observations and, if required, testing of rated features for a home as featured, optioned, located, oriented and/or built.  
+Standard new home is based on the RESNET® Reference Home definition with a HERS® index of 100 (based on the 2006 International Energy Conservation Code).  
++Typical resale home is based on the U.S. Department of Energy definition with a HERS® index of 130.

<sup>^</sup>RESNET® has developed the HERS® index to indicate the comparative efficiencies of homes. It is no guarantee that energy efficiencies will be achieved.