

Monte Bello at Summerlin

REAGAN



Elevation A

Available elevations:



Elevation A



Elevation B



Elevation C

Approx. square feet: 3,500
Stories: 1
Bedrooms: 3
Garage: 3-car
Plan Number: L35R

The ranch-style Reagan plan offers a courtyard entry, covered porch and covered backyard patio, so you can enjoy your outdoor spaces. A study, wide foyer, dining room, great room, nook and kitchen provide ample space to entertain or relax. A butler's pantry and Jack-and-Jill bath set the plan apart.

COMMUNITY LOCATION
5701 Corona Vista Street
Las Vegas, NV 89135
702-638-4440

HOME GALLERY
7770 South Dean Martin Drive, Suite 308
Las Vegas, NV 89139
702-617-8400



COMMUNITY LOCATION
5701 Corona Vista Street
Las Vegas, NV 89135
702-638-4440

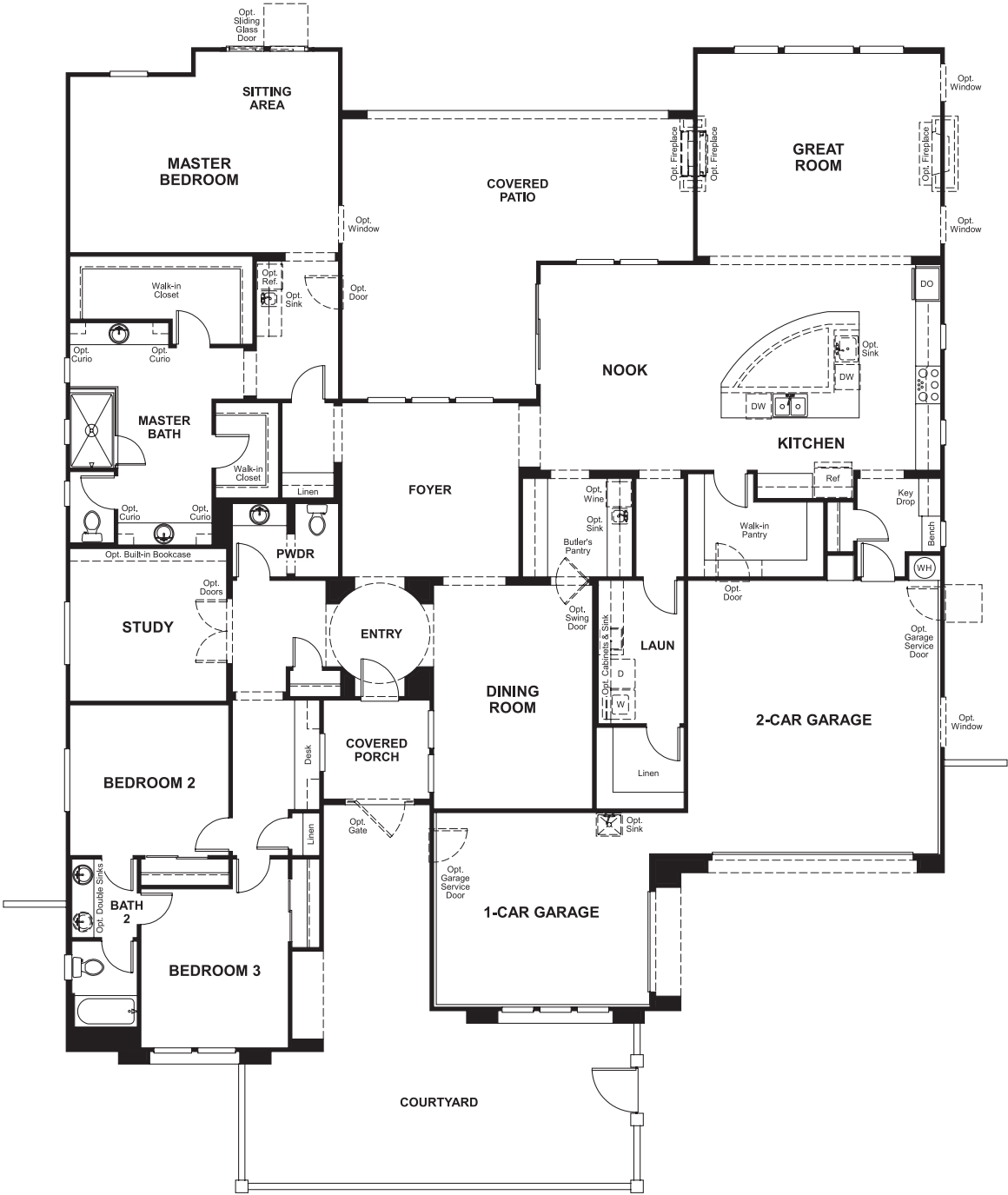
HOME GALLERY
7770 South Dean Martin Drive, Suite 308
Las Vegas, NV 89139
702-617-8400



Monte Bello at Summerlin
REAGAN

Approx. square feet: 3,500
Stories: 1
Bedrooms: 3
Garage: 3-car
Plan Number: L35R

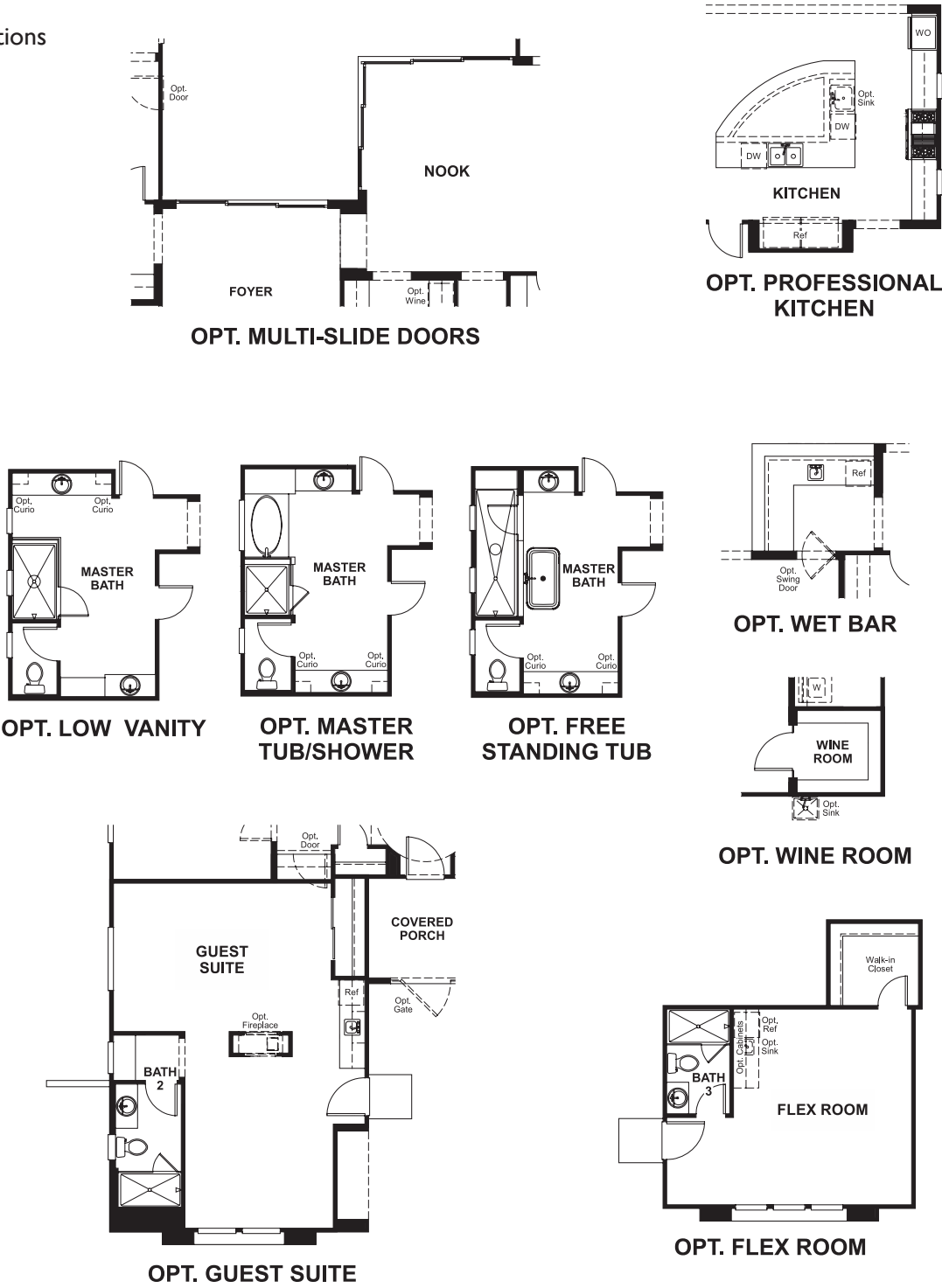
Floor Plan
First Floor



**THIS PLAN'S PROJECTED
HERS® INDEX = 63 ***
Projected Rating Based on Plans – Field Confirmation Required

How does this floor plan rate?
Take a look: **100** = Standard new home* **130** = Typical resale home**
The lower the number, the better! Refer to the RESNET® HERS index brochure or go to www.RESNET.us for details.

Floor Plan
First Floor Options



What's a HERS® Index? HERS stands for Home Energy Rating System, a system created by RESNET® to measure home energy efficiency.^
A Projected HERS index or rating is a computer simulation performed prior to construction by a third-party HERS rater using RESNET-accredited rating software, rated feature and specification data derived from home plans, features and specifications, and other data selected or assumed by the rater. The projected HERS index is approximate and is subject to change without notice. Actual results will vary.

*This information is presented for education purposes only. The HERS index for a confirmed rating will be determined by a third-party HERS rater based on data gathered from on-site observations and, if required, testing of rated features for a home as featured, optioned, located, oriented and/or built.
+Standard new home is based on the RESNET® Reference Home definition with a HERS® index of 100 (based on the 2006 International Energy Conservation Code).
++Typical resale home is based on the U.S. Department of Energy definition with a HERS® index of 130.

^RESNET® has developed the HERS® index to indicate the comparative efficiencies of homes. It is no guarantee that energy efficiencies will be achieved.