

The Estates at Madera Highlands
ROBERT



Elevation A

Approx. square feet: 4,000

Stories: 1

Bedrooms: 4

Garage: 3-car

Plan Number: T40R

In addition to a luxurious master suite, the ranch-style Robert plan has a guest suite, complete with bedroom, living room and private bath. Other highlights of this plan include a private study, a formal dining room, a spacious great room and a well-appointed kitchen with a center island, breakfast nook and optional gourmet or professional features. An optional second master suite is also available.

Available elevations:



Elevation A



Elevation B



Elevation C



COMMUNITY LOCATION
1189 East Madera Estates Lane
Suhuarita, AZ 85629
520-498-4155

HOME GALLERY
3091 West Ina Road
Tucson, AZ 85741
877-346-8102



COMMUNITY LOCATION
1189 East Madera Estates Lane
Suhuarita, AZ 85629
520-498-4155

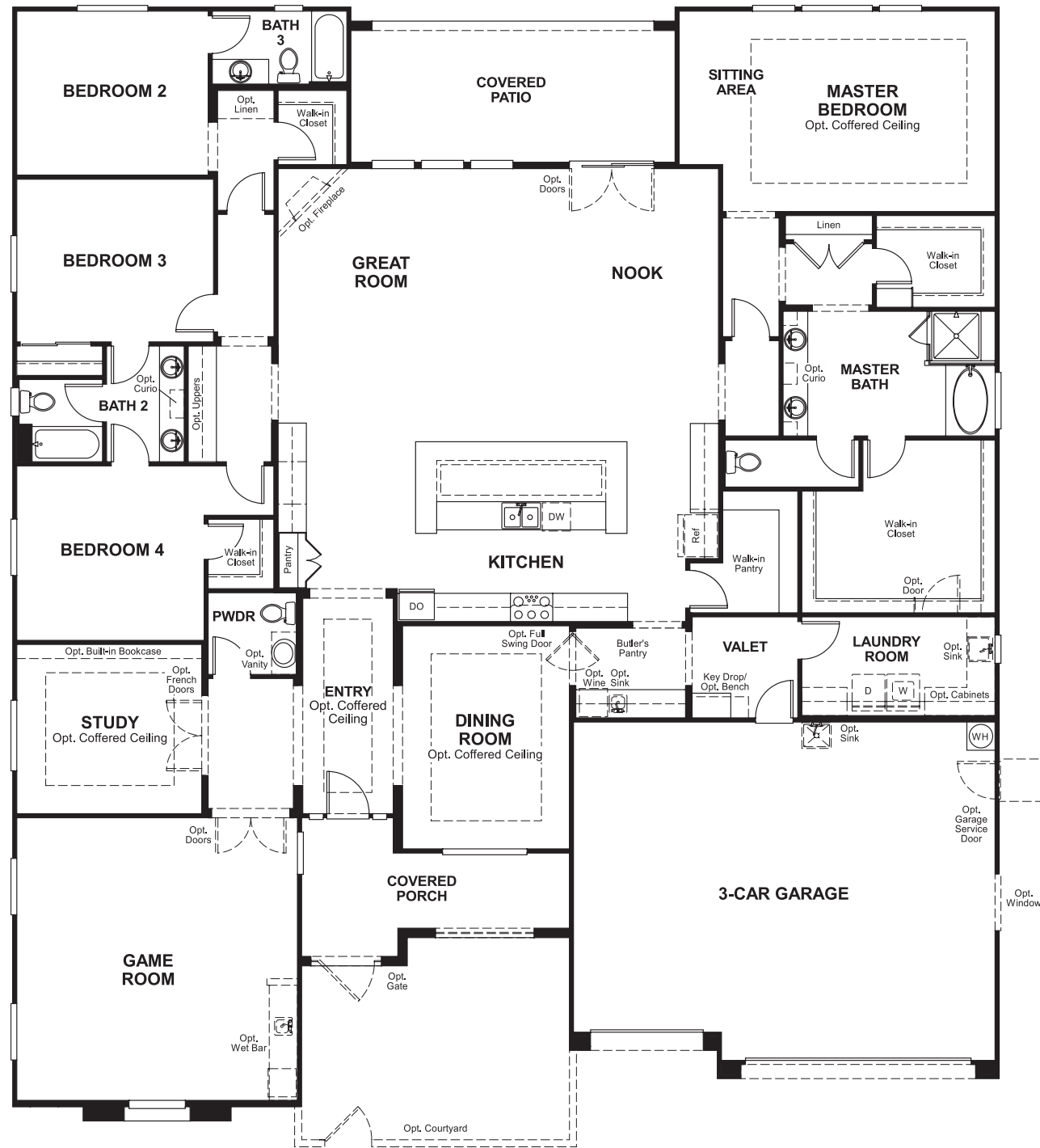
HOME GALLERY
3091 West Ina Road
Tucson, AZ 85741
877-346-8102

The Estates at Madera Highlands
ROBERT

Approx. square feet: 4,000
Stories: 1
Bedrooms: 4

Garage: 3-car
Plan Number: T40R

Floor Plan
Main Floor



Floor Plan
Main Floor Options



**THIS PLAN'S PROJECTED
HERS® INDEX = 62***
Projected Rating Based on Plans – Field Confirmation Required

How does this floor plan rate?
Take a look: **100** = Standard new home* **130** = Typical resale home**
The lower the number, the better! Refer to the RESNET® HERS index brochure or go to www.RESNET.us for details.

What's a HERS® Index? HERS stands for Home Energy Rating System, a system created by RESNET® to measure home energy efficiency. A Projected HERS index or rating is a computer simulation performed prior to construction by a third-party HERS rater using RESNET-accredited rating software, rated feature and specification data derived from home plans, features and specifications, and other data selected or assumed by the rater. The projected HERS index is approximate and is subject to change without notice. Actual results will vary.

*This information is presented for education purposes only. The HERS index for a confirmed rating will be determined by a third-party HERS rater based on data gathered from on-site observations and, if required, testing of rated features for a home as featured, optioned, located, oriented and/or built.
+Standard new home is based on the RESNET® Reference Home definition with a HERS® index of 100 (based on the 2006 International Energy Conservation Code).
**Typical resale home is based on the U.S. Department of Energy definition with a HERS® index of 130.

^RESNET® has developed the HERS® index to indicate the comparative efficiencies of homes. It is no guarantee that energy efficiencies will be achieved.