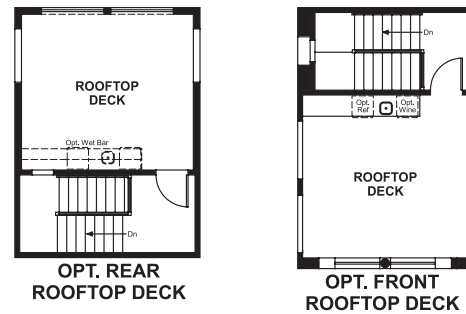


The Summit at San Elijo
ROCKWELL

Approx. square feet: 4,650
Stories: 2
Bedrooms: 4 - 7

Garage: 2- to 3-car
Plan Number: S695

Floor Plan
Rooftop Terrace



The Summit at San Elijo
ROCKWELL

Approx. square feet: 4,650
Stories: 2
Bedrooms: 4 - 7
Garage: 2- to 3-car
Plan Number: S695

When you step inside the inviting Rockwell plan, you'll immediately notice the expansive great room off the entry. The main floor also features a bedroom, club room, dining room and gourmet kitchen, complete with a walk-in pantry, center island, separate prep kitchen and adjacent covered patio. On the second floor, retreat to an immense master suite with a deluxe bath, oversized walk-in closet and spacious deck. Make this home your own with optional bedrooms, a professional kitchen and much more.



Elevation B

Available elevations:



Elevation B



Elevation D



Elevation E

COMMUNITY LOCATION
526 Ledge Street
San Marcos, CA 92078
760-653-7010

HOME GALLERY
5171 California Avenue
Irvine, CA 92617
800-852-9714



COMMUNITY LOCATION
526 Ledge Street
San Marcos, CA 92078
760-653-7010

HOME GALLERY
5171 California Avenue
Irvine, CA 92617
800-852-9714

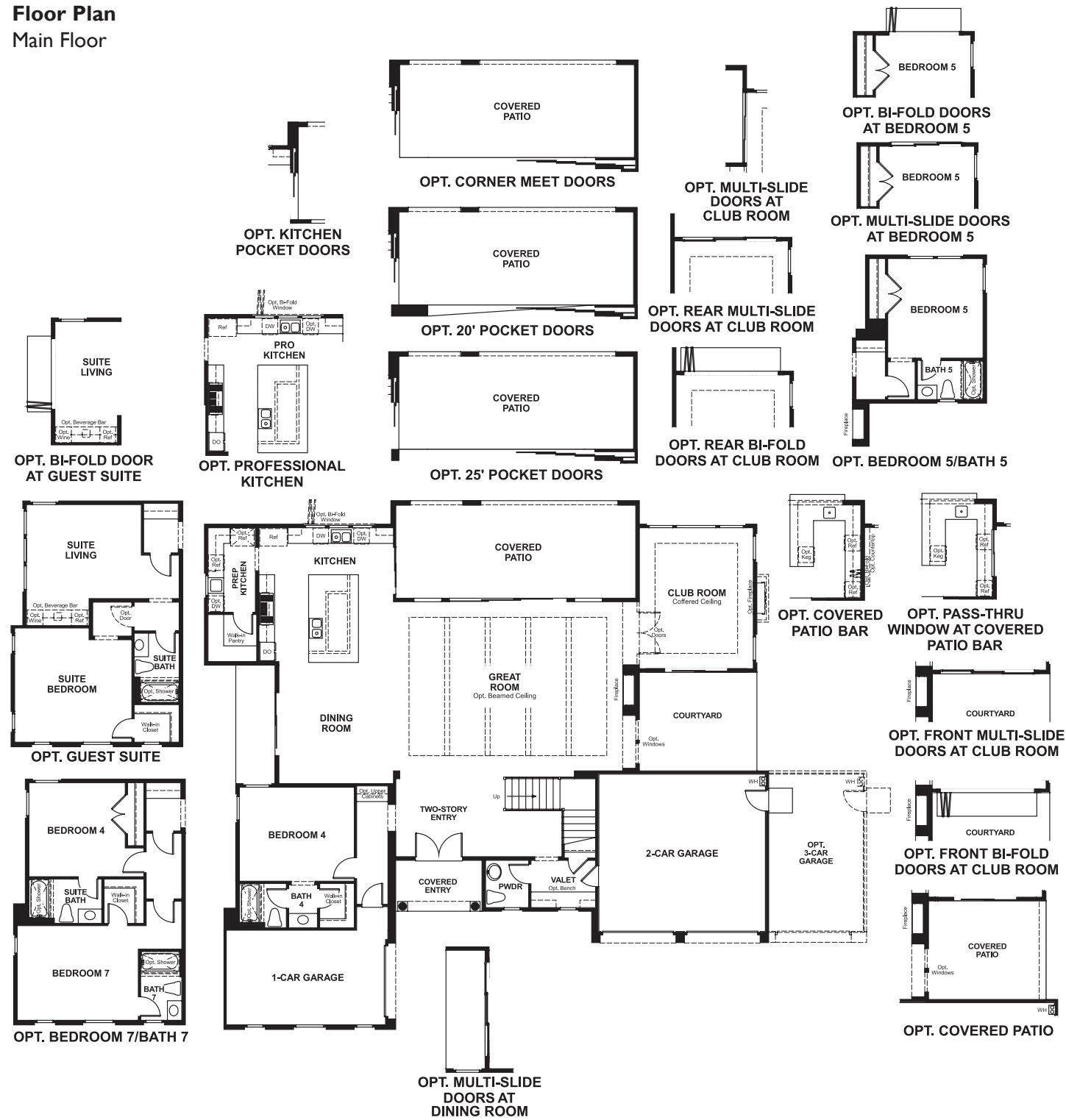


The Summit at San Elijo
ROCKWELL

Approx. square feet: 4,650
Stories: 2
Bedrooms: 4 - 7

Garage: 2- to 3-car
Plan Number: S695

Floor Plan
Main Floor



Floor Plan
Second Floor

