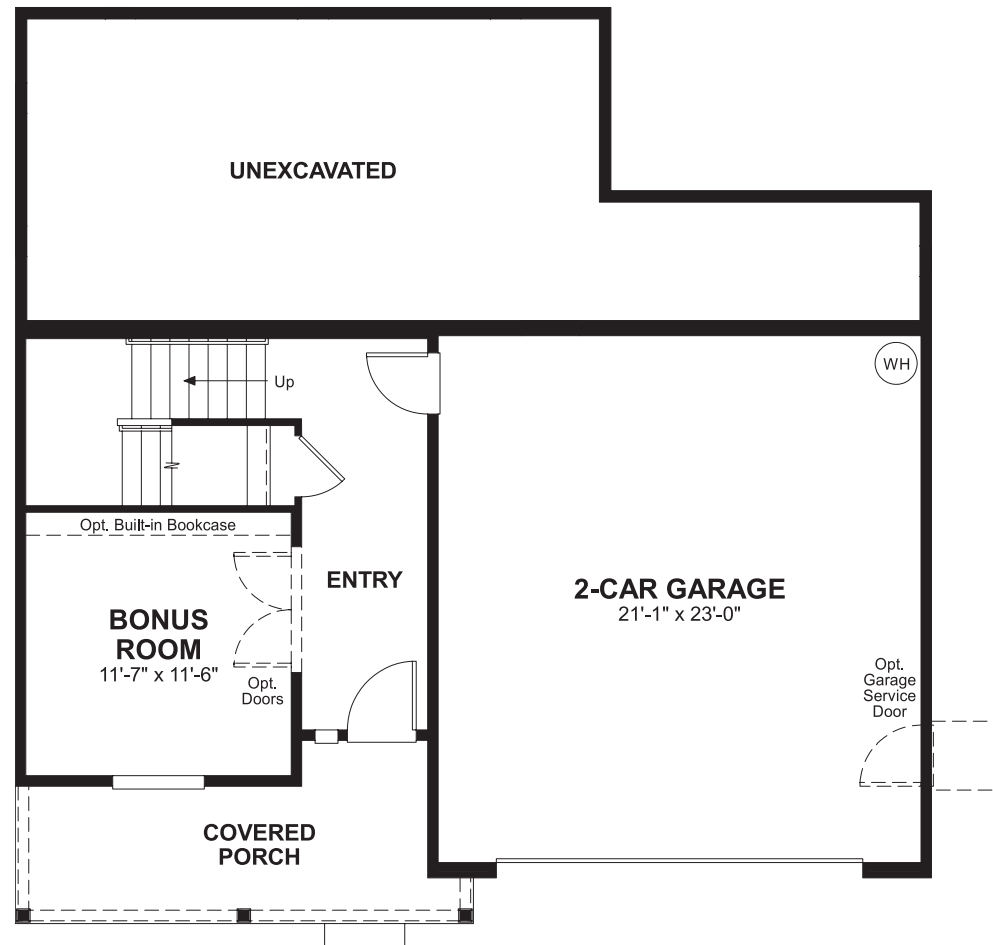


Creekstone Estates
SABRINA

Approx. square feet: 2,950
Stories: 2
Bedrooms: 4 - 5

Garage: 2-car
Plan Number: W622

Floor Plan
Lower Floor



COMMUNITY LOCATION
8418 121st Place Southeast
Newcastle, WA 98056
425-654-1175

HOME GALLERY
310 29th Street Northeast
Puyallup, WA 98372
253-446-7277



Creekstone Estates
SABRINA

Approx. square feet: 2,950
Stories: 2
Bedrooms: 4 - 5
Garage: 2-car
Plan Number: W622

A 2-car garage and bonus room flank the entry to the Sabrina plan. On the main floor, you'll find a quiet study, a convenient bedroom and a spacious great room that opens to the dining room. You'll also appreciate the chef's kitchen, which has a double-oven and a side-by-side refrigerator. The upper floor features a large loft, which can be optioned as a fifth bedroom, and a master suite with a deluxe bath and an expansive walk-in closet.



Elevation C

Available elevations:



Elevation C



Elevation D



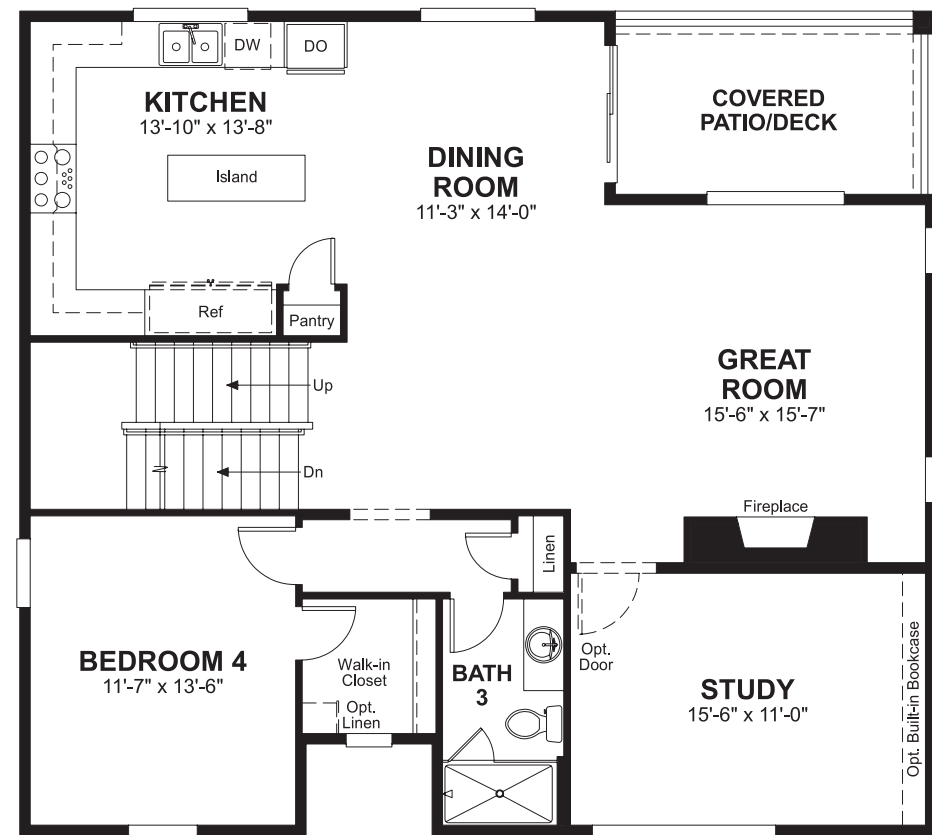
Elevation E

COMMUNITY LOCATION
8418 121st Place Southeast
Newcastle, WA 98056
425-654-1175

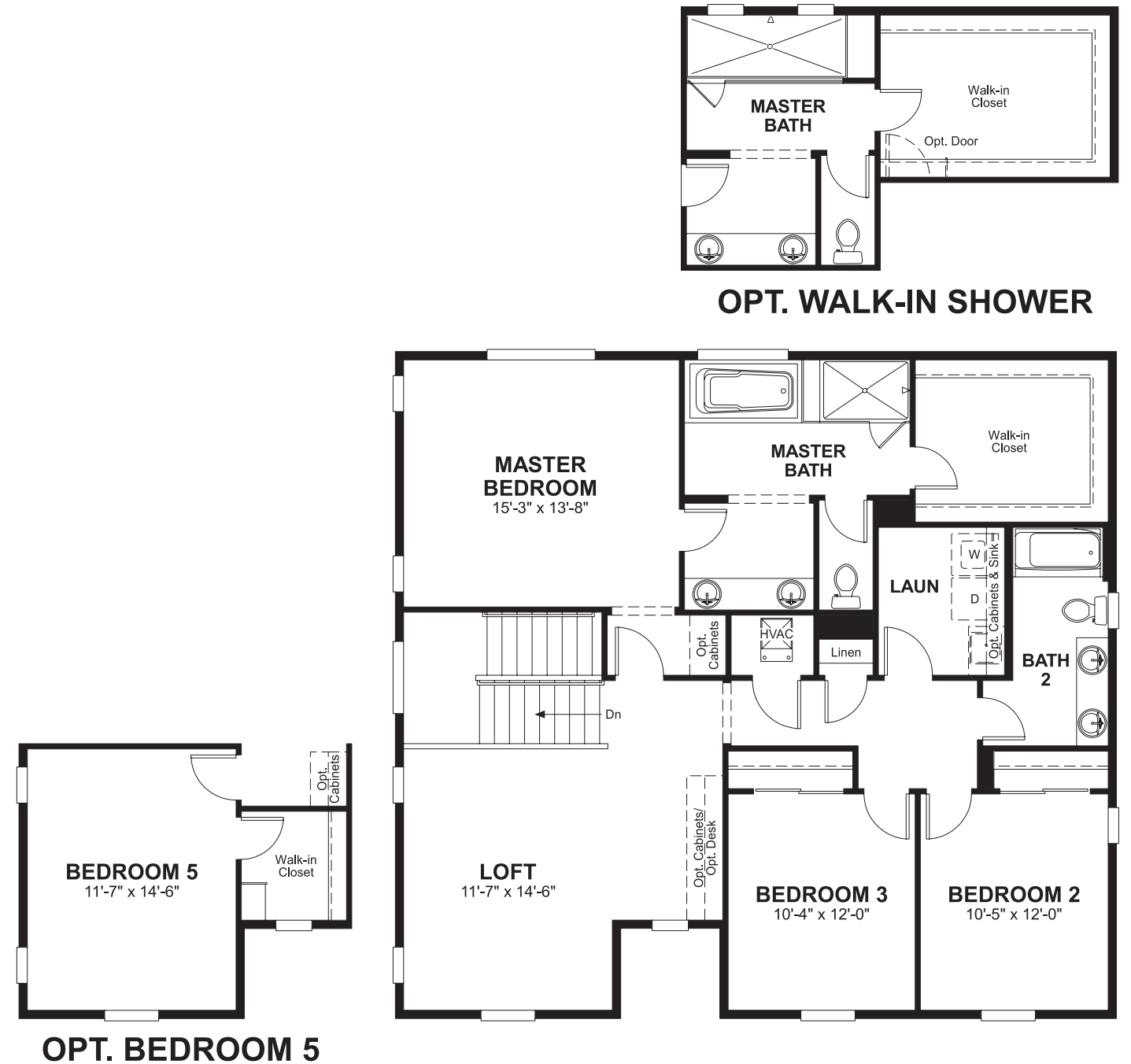
HOME GALLERY
310 29th Street Northeast
Puyallup, WA 98372
253-446-7277



Floor Plan
Main Floor



Floor Plan
Upper Floor



**THIS PLAN'S PROJECTED
HERS® INDEX = 65** *
Projected Rating Based on Plans – Field Confirmation Required

How does this floor plan rate?
Take a look: **100** = Standard new home* **130** = Typical resale home**
The lower the number, the better! Refer to the RESNET® HERS index brochure or go to www.RESNET.us for details.

What's a HERS® Index? HERS stands for Home Energy Rating System, a system created by RESNET® to measure home energy efficiency.[^]
A Projected HERS index or rating is a computer simulation performed prior to construction by a third-party HERS rater using RESNET-accredited rating software, rated feature and specification data derived from home plans, features and specifications, and other data selected or assumed by the rater. The projected HERS index is approximate and is subject to change without notice. Actual results will vary.

*This information is presented for education purposes only. The HERS index for a confirmed rating will be determined by a third-party HERS rater based on data gathered from on-site observations and, if required, testing of rated features for a home as featured, optioned, located, oriented and/or built.
+Standard new home is based on the RESNET® Reference Home definition with a HERS® index of 100 (based on the 2006 International Energy Conservation Code).
++Typical resale home is based on the U.S. Department of Energy definition with a HERS® index of 130.

[^]RESNET® has developed the HERS® index to indicate the comparative efficiencies of homes. It is no guarantee that energy efficiencies will be achieved.