

Treaty Oaks
SETH



Elevation C Shown with optional stone

Approx. square feet: 2,900
Stories: 2
Bedrooms: 4 - 6
Garage: 3-car
Plan Number: J29A

The Seth plan is a stylish two-story home with ample options for design personalization. Opt for a luxurious gourmet kitchen with a spacious center island. The second floor includes a loft that can be converted into an extra bedroom, and the master bedroom features a walk-in closet and optional deluxe master bath.

Available elevations:



Elevation C Shown w/opt. stone



Elevation D



Elevation E



Elevation F



Elevation K



Elevation L



Elevation M

COMMUNITY LOCATION

524 Tumbled Stone Way
 St. Augustine, FL 32086
 904-429-7876

HOME GALLERY

1560 Wells Road, Building A
 Orange Park, FL 32073
 800-221-3014



COMMUNITY LOCATION

524 Tumbled Stone Way
 St. Augustine, FL 32086
 904-429-7876

HOME GALLERY

1560 Wells Road, Building A
 Orange Park, FL 32073
 800-221-3014

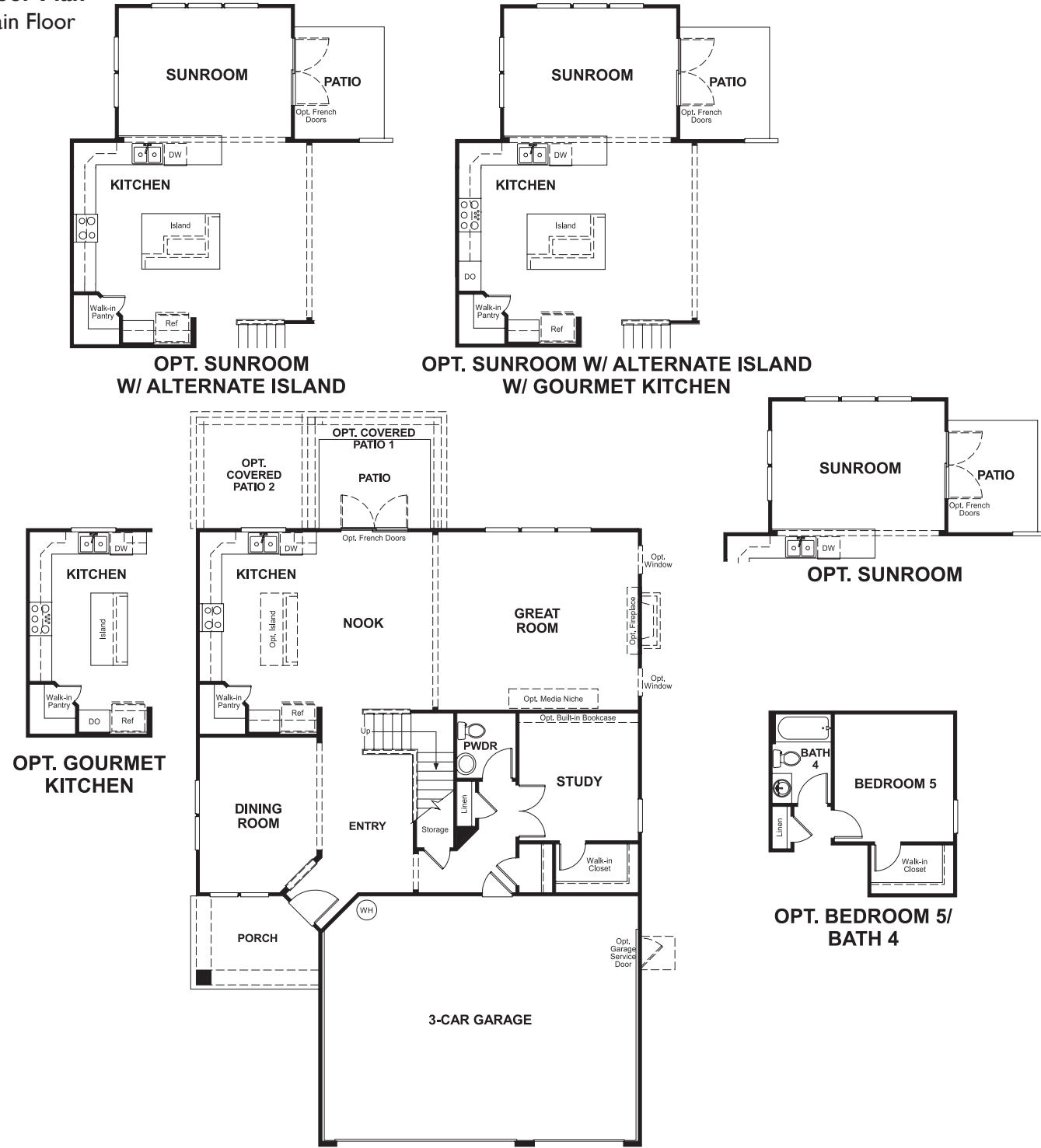


Treaty Oaks
SETH

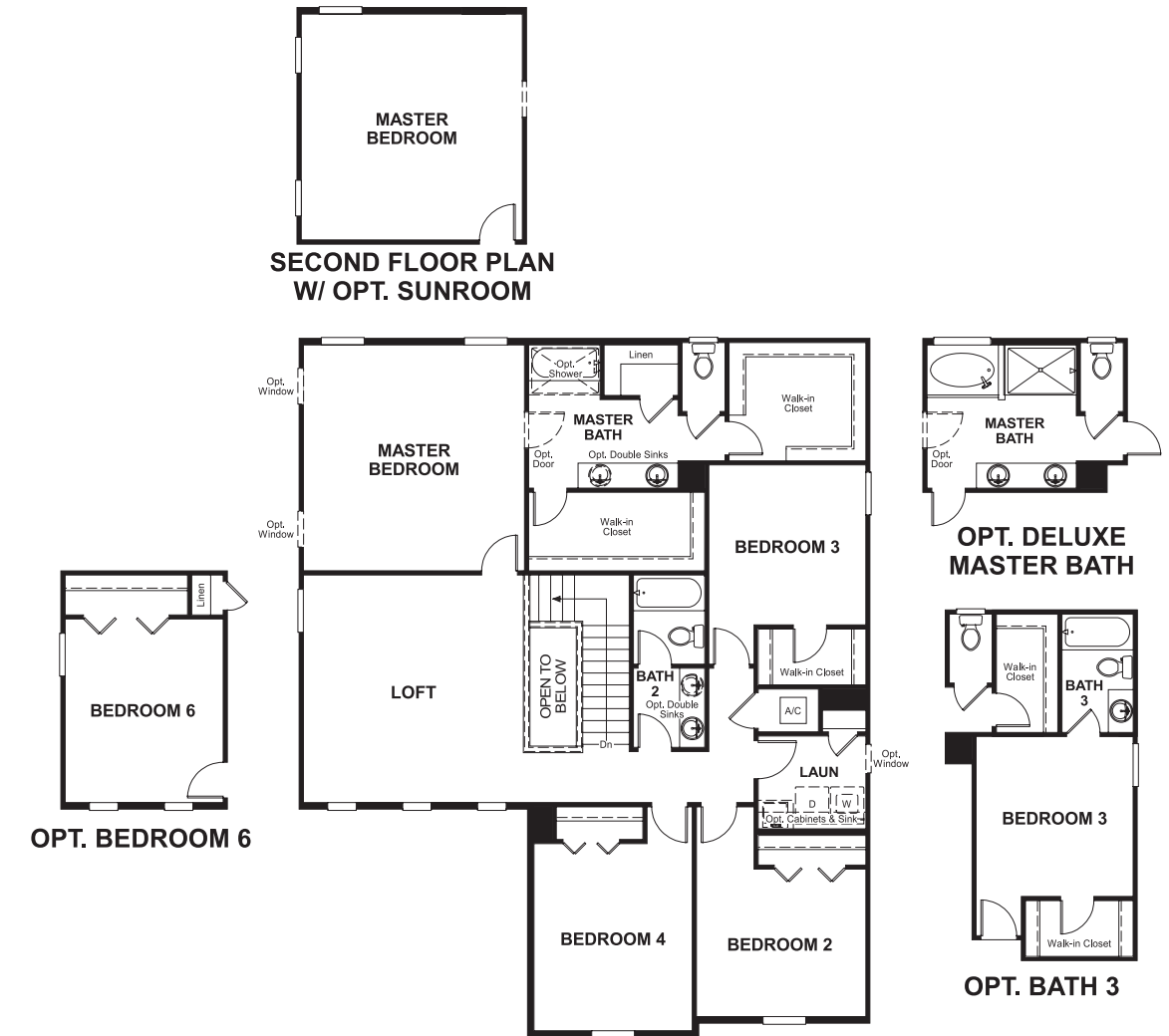
Approx. square feet: 3,100
Stories: 2
Bedrooms: 4 - 6

Garage: 3-car
Plan Number: J29A

Floor Plan
Main Floor



Floor Plan
Second Floor



THIS PLAN'S PROJECTED
HERS® INDEX = 61 *
Projected Rating Based on Plans – Field Confirmation Required

How does this floor plan rate?

Take a look: **100** = Standard new home* **130** = Typical resale home**
The lower the number, the better! Refer to the RESNET® HERS index brochure or go to www.RESNET.us for details.

What's a HERS® Index? HERS stands for Home Energy Rating System, a system created by RESNET® to measure home energy efficiency.[^]

A Projected HERS index or rating is a computer simulation performed prior to construction by a third-party HERS rater using RESNET-accredited rating software, rated feature and specification data derived from home plans, features and specifications, and other data selected or assumed by the rater. The projected HERS index is approximate and is subject to change without notice. Actual results will vary.

*This information is presented for education purposes only. The HERS index for a confirmed rating will be determined by a third-party HERS rater based on data gathered from on-site observations and, if required, testing of rated features for a home as featured, optioned, located, oriented and/or built.

+Standard new home is based on the RESNET® Reference Home definition with a HERS® index of 100 (based on the 2006 International Energy Conservation Code).

**Typical resale home is based on the U.S. Department of Energy definition with a HERS® index of 130.

[^]RESNET® has developed the HERS® index to indicate the comparative efficiencies of homes. It is no guarantee that energy efficiencies will be achieved.