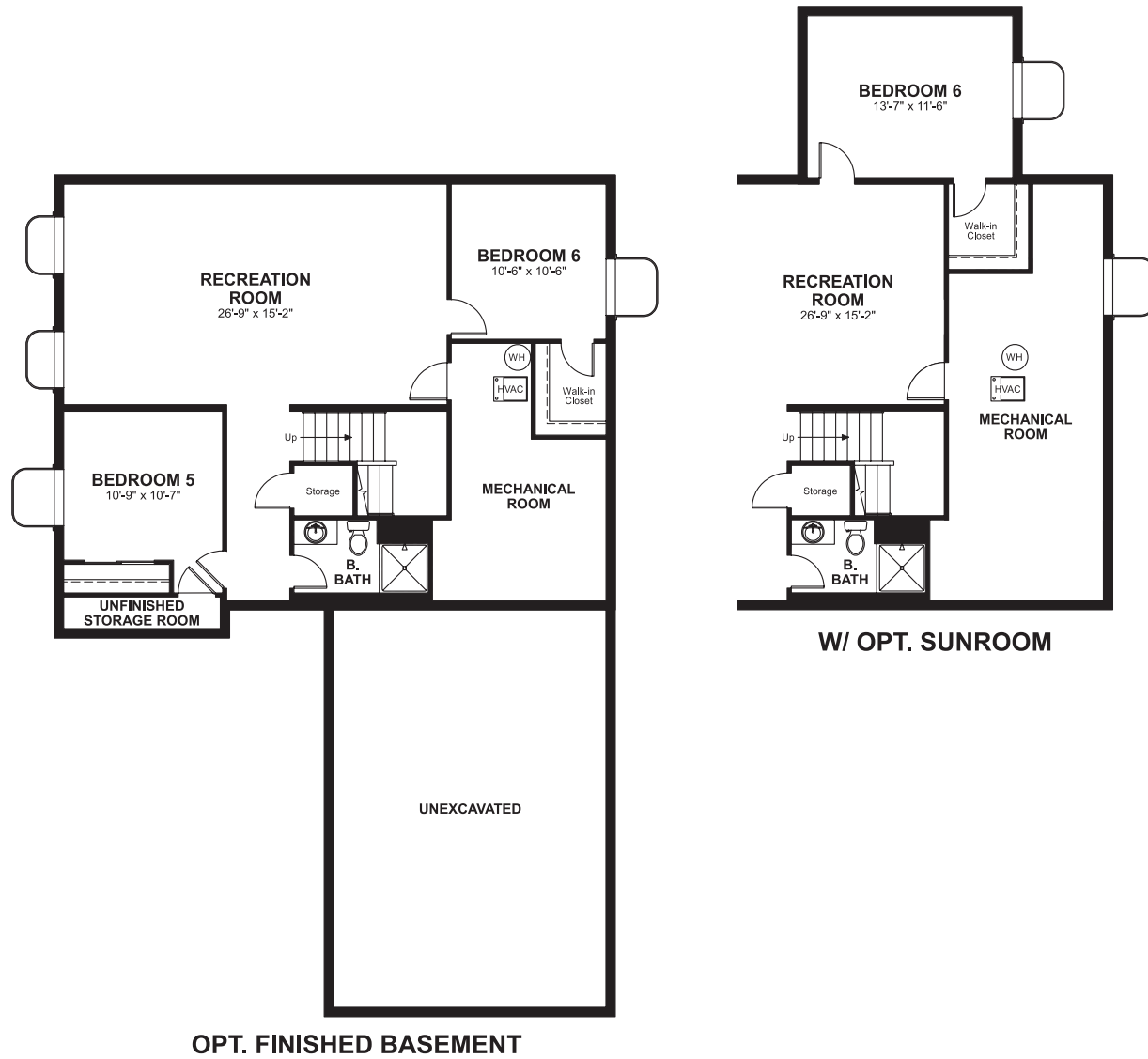


Gambel Oak
SKYLAR

Approx. square feet: 2,450
Stories: 2
Bedrooms: 4 - 6

Garage: 2-car
Plan Number: D25A

Floor Plan
Basement



Gambel Oak
SKYLAR

Approx. square feet: 2,450
Stories: 2
Bedrooms: 4 - 6
Garage: 2-car
Plan Number: D25A

The main floor of the distinctive Skylar plan features formal living and dining rooms, an open great room, an inviting kitchen with island and an optional covered patio. Upstairs, you'll find a relaxing master suite with optional deluxe bath and three additional bedrooms. Options include a sunroom, tech center and finished basement.



Elevation A

Available elevations:



Elevation A



Elevation B



Elevation D



Elevation E

COMMUNITY LOCATION
Low Meadow Boulevard & Treetop Drive
Castle Rock, CO 80109
303-660-0950

HOME GALLERY
8000 East Bellview Avenue, Suite C-12
Greenwood Village, CO 80111
888-402-4663



COMMUNITY LOCATION
Low Meadow Boulevard & Treetop Drive
Castle Rock, CO 80109
303-660-0950

HOME GALLERY
8000 East Bellview Avenue, Suite C-12
Greenwood Village, CO 80111
888-402-4663

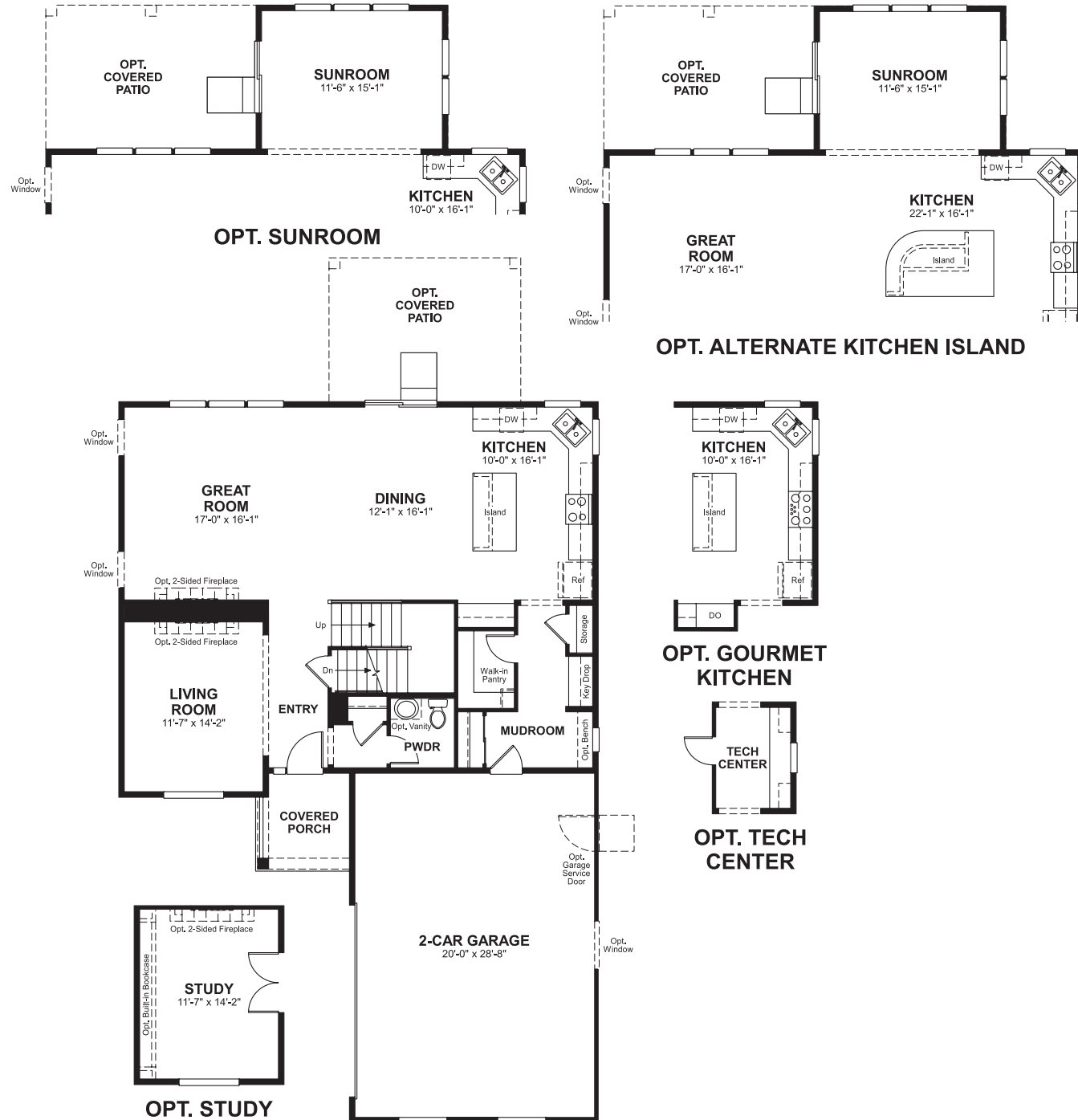


Gambel Oak
SKYLAR

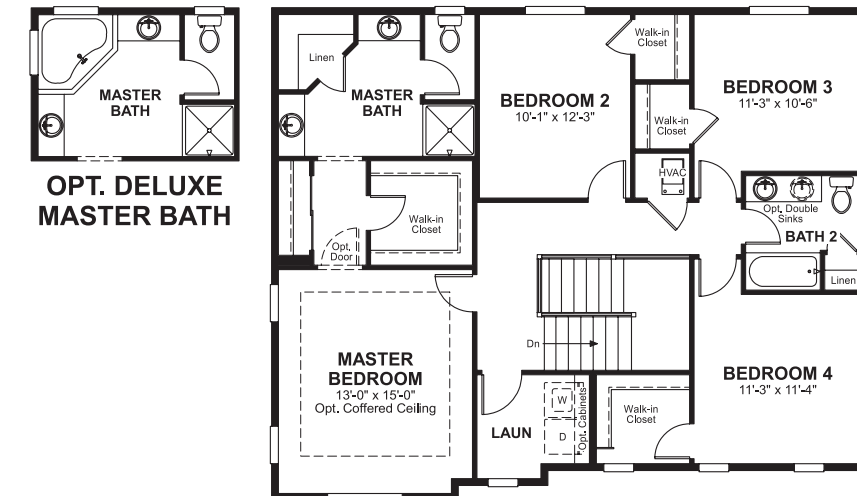
Approx. square feet: 2,450
Stories: 2
Bedrooms: 4 - 6

Garage: 2-car
Plan Number: D25A

Floor Plan
First Floor



Floor Plan
Second Floor



**THIS PLAN'S PROJECTED
HERS® INDEX = 57***
Projected Rating Based on Plans – Field Confirmation Required

How does this floor plan rate?
Take a look: **100** = Standard new home* **130** = Typical resale home**
The lower the number, the better! Refer to the RESNET® HERS index brochure or go to www.RESNET.us for details.

What's a HERS® Index? HERS stands for Home Energy Rating System, a system created by RESNET® to measure home energy efficiency. A Projected HERS index or rating is a computer simulation performed prior to construction by a third-party HERS rater using RESNET-accredited rating software, rated feature and specification data derived from home plans, features and specifications, and other data selected or assumed by the rater. The projected HERS index is approximate and is subject to change without notice. Actual results will vary.

*This information is presented for education purposes only. The HERS index for a confirmed rating will be determined by a third-party HERS rater based on data gathered from on-site observations and, if required, testing of rated features for a home as featured, optioned, located, oriented and/or built.
+Standard new home is based on the RESNET® Reference Home definition with a HERS® index of 100 (based on the 2006 International Energy Conservation Code).
**Typical resale home is based on the U.S. Department of Energy definition with a HERS® index of 130.

^RESNET® has developed the HERS® index to indicate the comparative efficiencies of homes. It is no guarantee that energy efficiencies will be achieved.