

Presidio Del Norte
SOPHIE



Elevation A

Approx. square feet: 2,850
Stories: 2
Bedrooms: 5
Garage: 3-car
Plan Number: T294

The Sophie plan offers a wealth of options to suit your lifestyle. Choose a bedroom in lieu of the study. Add a second master suite upstairs or a bedroom in place of the loft. Upgrade with a gourmet kitchen, butler's pantry or deluxe master bath.

Available elevations:



Elevation A



Elevation B



Elevation C - Shown with optional stone



COMMUNITY LOCATION
 859 West Calle Ocarina
 Sahuarita, AZ 85629
 877-346-8102

HOME GALLERY
 3091 West Ina Road
 Tucson, AZ 85741
 877-346-8102



COMMUNITY LOCATION
 859 West Calle Ocarina
 Sahuarita, AZ 85629
 877-346-8102

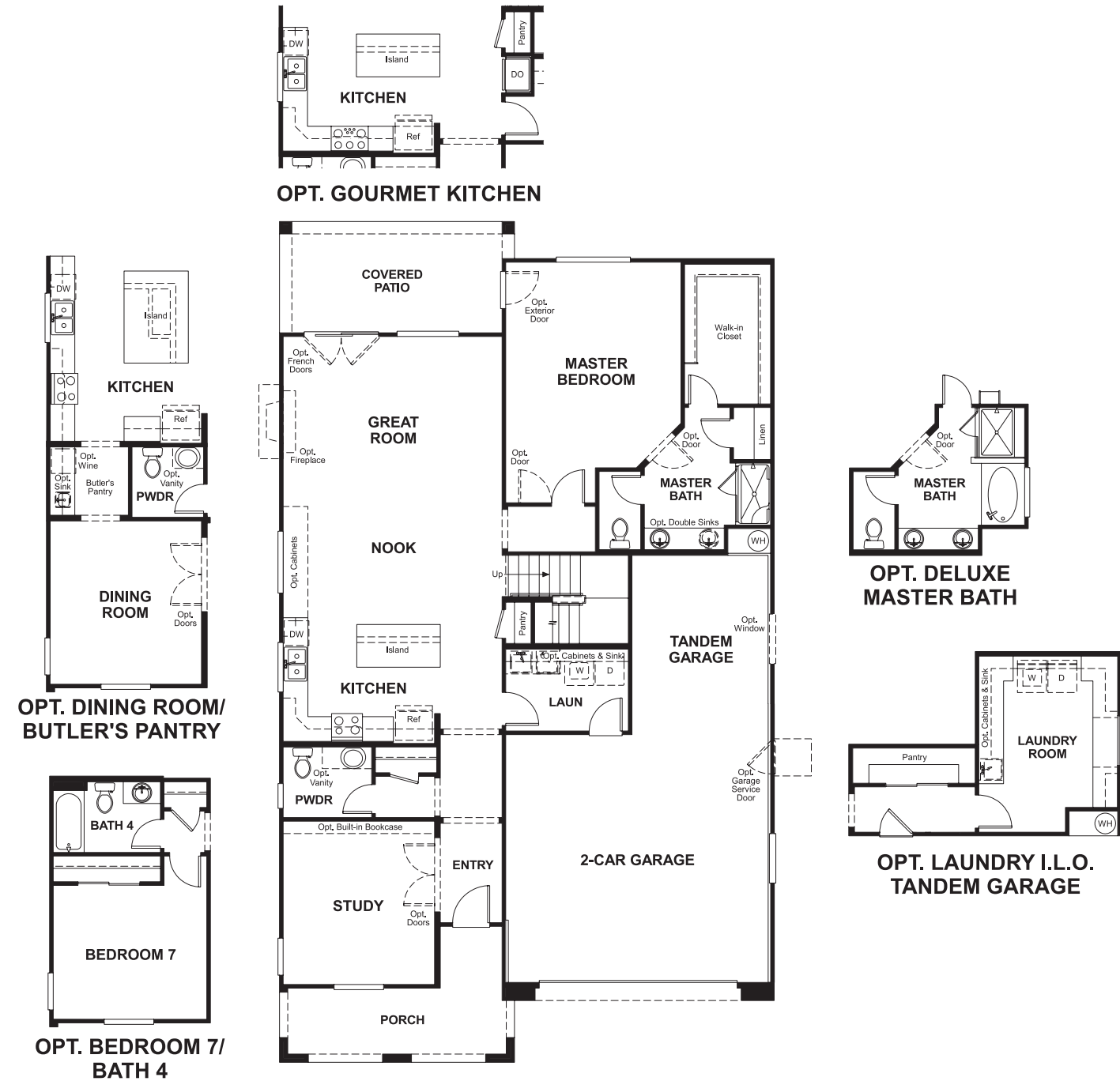
HOME GALLERY
 3091 West Ina Road
 Tucson, AZ 85741
 877-346-8102

Presidio Del Norte
SOPHIE

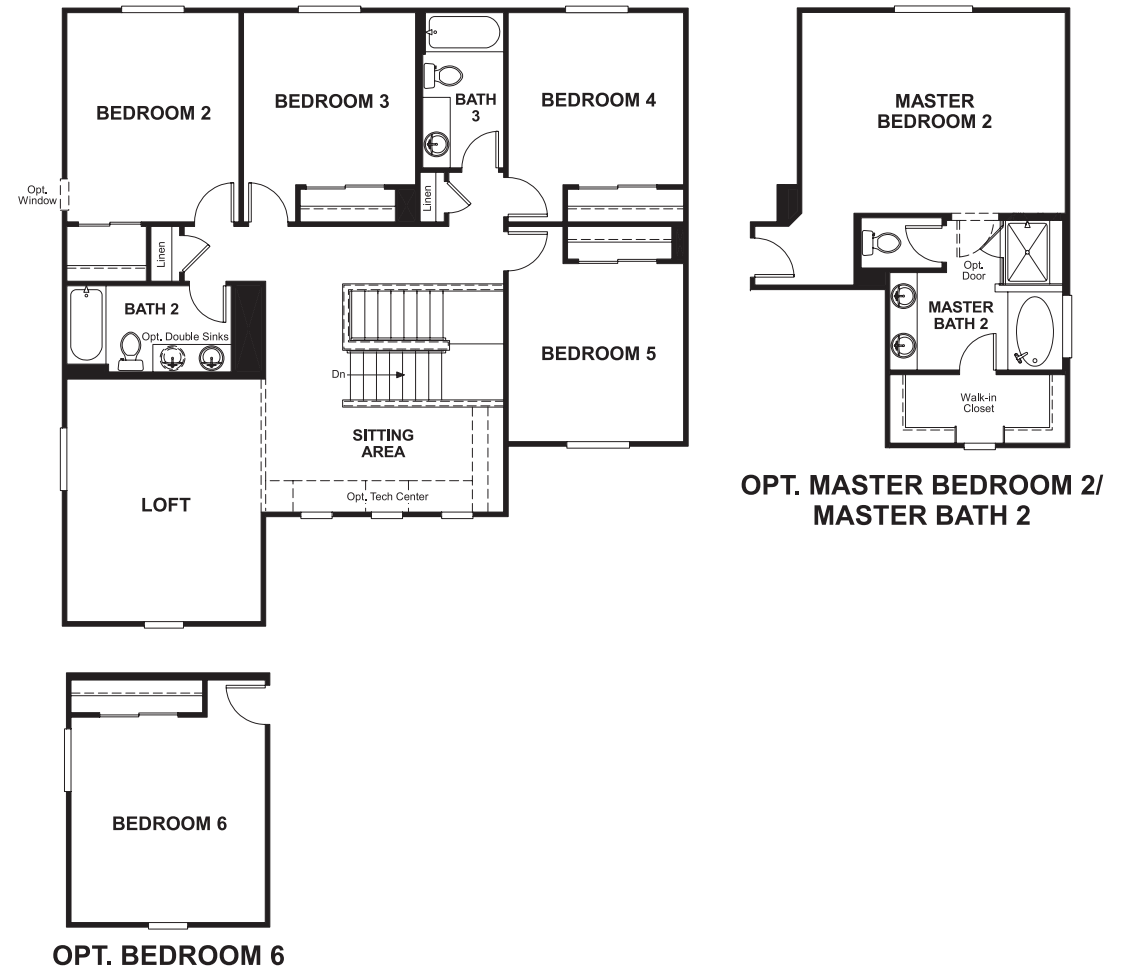
Approx. square feet: 2,850
Stories: 2
Bedrooms: 5

Garage: 3-car
Plan Number: T294

Floor Plan
Main Floor



Floor Plan
Upper Floor



**THIS PLAN'S PROJECTED
HERS® INDEX = 70***
Projected Rating Based on Plans – Field Confirmation Required

How does this floor plan rate?
Take a look: **100** = Standard new home* **130** = Typical resale home**
The lower the number, the better! Refer to the RESNET® HERS index brochure or go to www.RESNET.us for details.

What's a HERS® Index? HERS stands for Home Energy Rating System, a system created by RESNET® to measure home energy efficiency. A Projected HERS index or rating is a computer simulation performed prior to construction by a third-party HERS rater using RESNET-accredited rating software, rated feature and specification data derived from home plans, features and specifications, and other data selected or assumed by the rater. The projected HERS index is approximate and is subject to change without notice. Actual results will vary.

*This information is presented for education purposes only. The HERS index for a confirmed rating will be determined by a third-party HERS rater based on data gathered from on-site observations and, if required, testing of rated features for a home as featured, optioned, located, oriented and/or built.
+Standard new home is based on the RESNET® Reference Home definition with a HERS® index of 100 (based on the 2006 International Energy Conservation Code).
**Typical resale home is based on the U.S. Department of Energy definition with a HERS® index of 130.

^RESNET® has developed the HERS® index to indicate the comparative efficiencies of homes. It is no guarantee that energy efficiencies will be achieved.