

Del Rio Ranch II
SOPHIE



Elevation A

Approx. square feet: 2,850
Stories: 2
Bedrooms: 5
Garage: 3-car
Plan Number: P294

The Sophie plan offers a wealth of options to suit your lifestyle. Choose a bedroom or a dining room with butler's pantry in lieu of the study. Add a second master suite upstairs or a bedroom in place of the loft. Upgrade with a gourmet kitchen. It's up to you!

Available elevations:



Elevation A



Elevation B



Elevation C



COMMUNITY LOCATION
2105 South 121st Drive
Avondale, AZ 85323
877-444-1485

HOME GALLERY
16427 North Scottsdale Road, Suite 175
Scottsdale, AZ 85254
877-444-1485



COMMUNITY LOCATION
2105 South 121st Drive
Avondale, AZ 85323
877-444-1485

HOME GALLERY
16427 North Scottsdale Road, Suite 175
Scottsdale, AZ 85254
877-444-1485

Del Rio Ranch II
SOPHIE

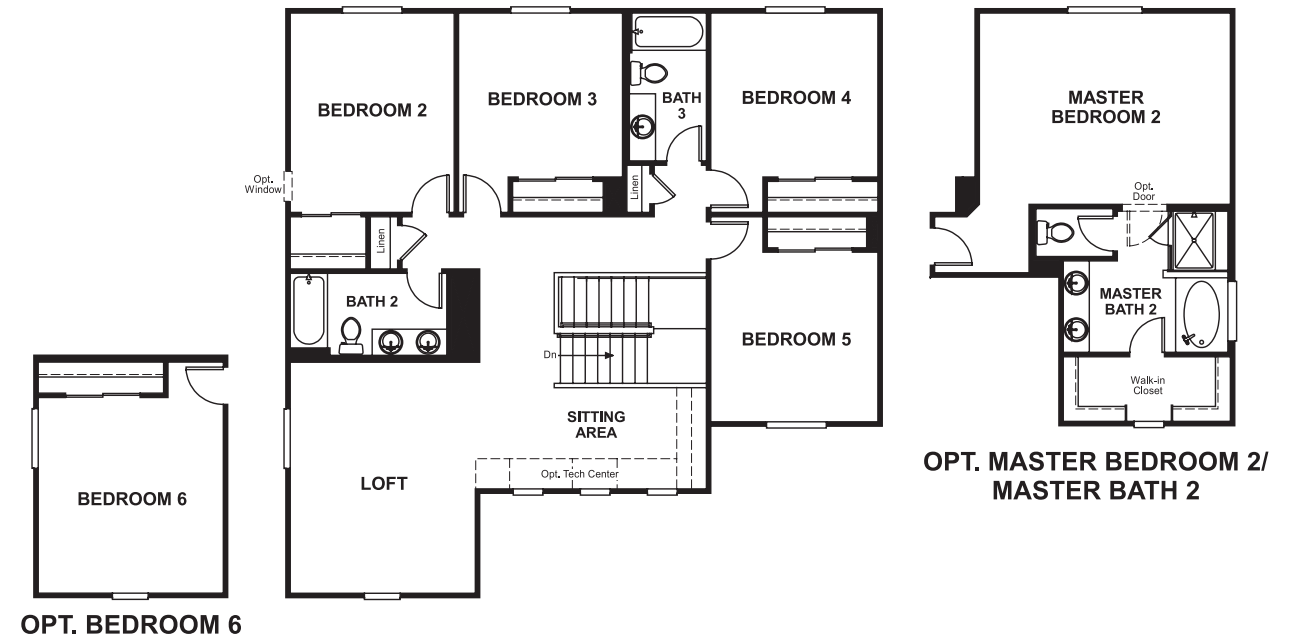
Approx. square feet: 2,850
Stories: 2
Bedrooms: 5

Garage: 3-car
Plan Number: P294

Floor Plan
First Floor



Floor Plan
Second Floor



**THIS PLAN'S PROJECTED
HERS® INDEX = 65***
Projected Rating Based on Plans – Field Confirmation Required

How does this floor plan rate?
Take a look: **100** = Standard new home* **130** = Typical resale home**
The lower the number, the better! Refer to the RESNET® HERS index brochure or go to www.RESNET.us for details.

What's a HERS® Index? HERS stands for Home Energy Rating System, a system created by RESNET® to measure home energy efficiency. A Projected HERS index or rating is a computer simulation performed prior to construction by a third-party HERS rater using RESNET-accredited rating software, rated feature and specification data derived from home plans, features and specifications, and other data selected or assumed by the rater. The projected HERS index is approximate and is subject to change without notice. Actual results will vary.

*This information is presented for education purposes only. The HERS index for a confirmed rating will be determined by a third-party HERS rater based on data gathered from on-site observations and, if required, testing of rated features for a home as featured, optioned, located, oriented and/or built.
+Standard new home is based on the RESNET® Reference Home definition with a HERS® index of 100 (based on the 2006 International Energy Conservation Code).
**Typical resale home is based on the U.S. Department of Energy definition with a HERS® index of 130.

^RESNET® has developed the HERS® index to indicate the comparative efficiencies of homes. It is no guarantee that energy efficiencies will be achieved.