

Del Rio Ranch
TATE



Elevation A

Approx. square feet: 3,400
Stories: 2
Bedrooms: 4
Garage: 3-car
Plan Number: P34C

The Tate offers an attractive covered front porch, a private study and a formal dining room. You'll also love walk-in pantry and mudroom off the kitchen/great room combination. The extra 1-car garage can be optioned as flex space or a sixth bedroom with bath. A large master suite and bedrooms are located upstairs.

Available elevations:



Elevation A



Elevation B



Elevation C



COMMUNITY LOCATION
 12033 West Overlin Lane
 Avondale, AZ 85323
 877-444-1485

HOME GALLERY
 16427 North Scottsdale Road, Suite 175
 Scottsdale, AZ 85254
 877-444-1485



COMMUNITY LOCATION
 12033 West Overlin Lane
 Avondale, AZ 85323
 877-444-1485

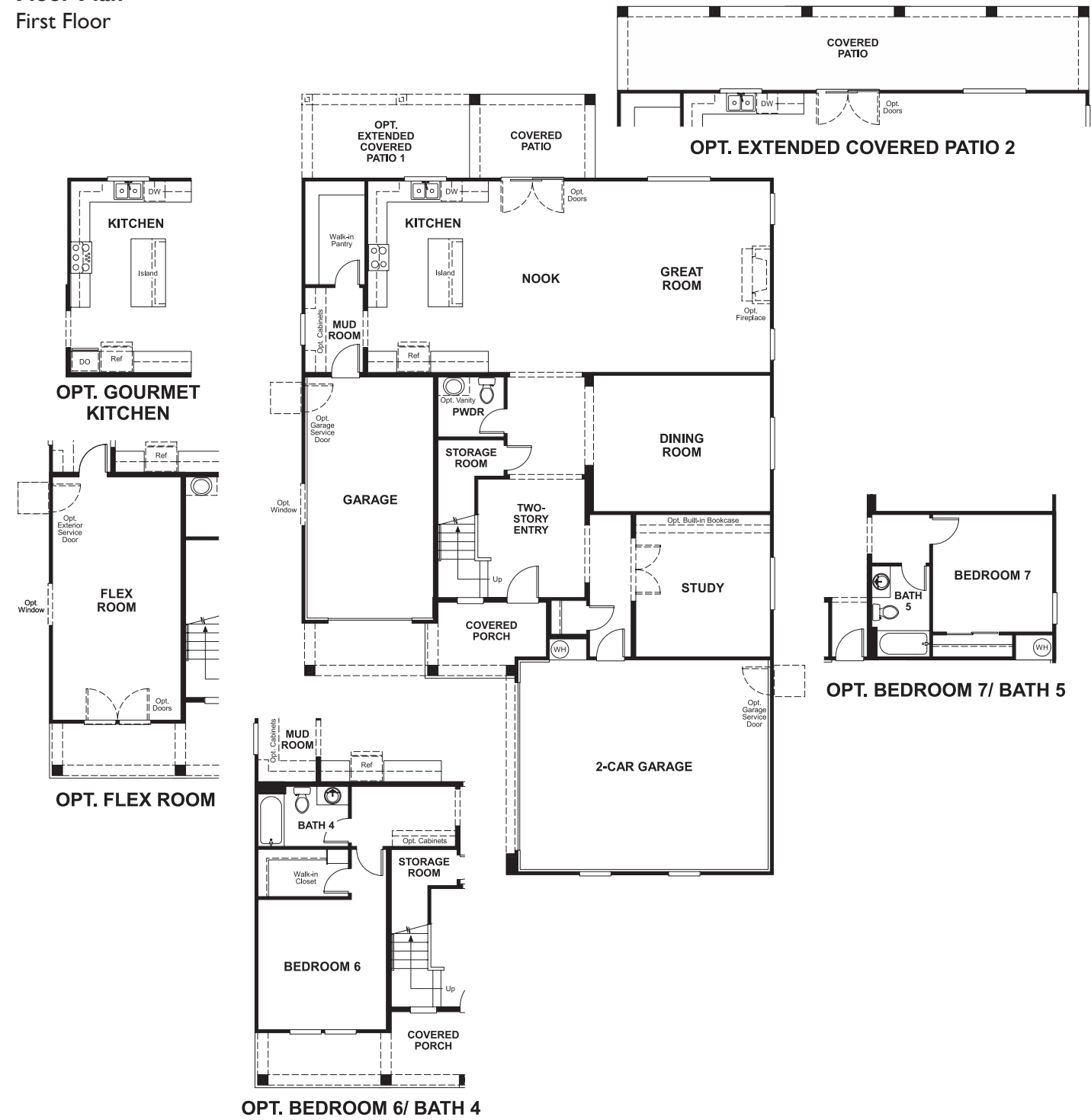
HOME GALLERY
 16427 North Scottsdale Road, Suite 175
 Scottsdale, AZ 85254
 877-444-1485

Del Rio Ranch
TATE

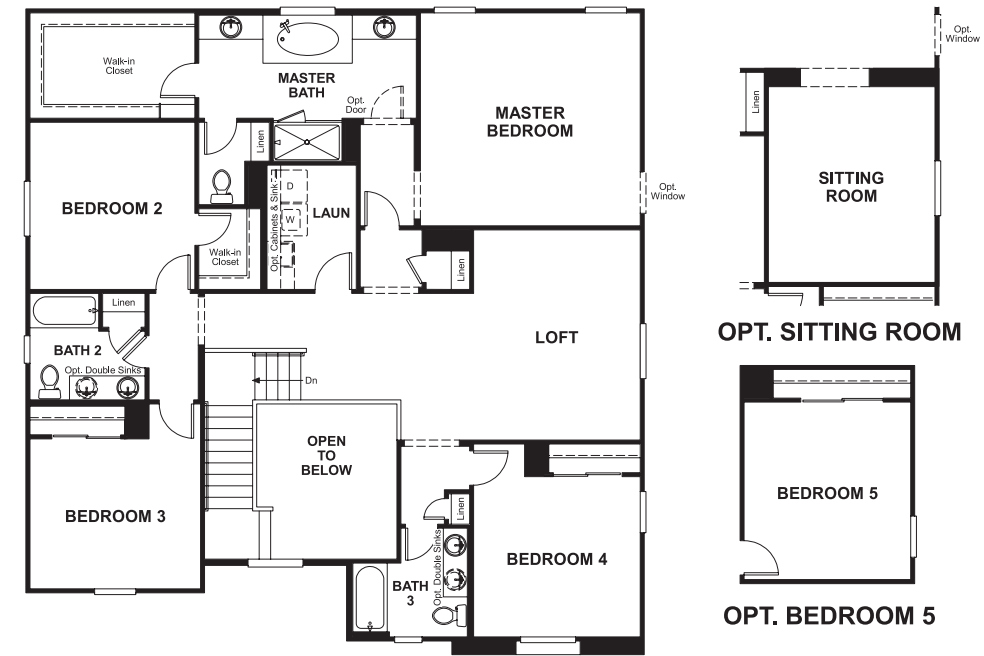
Approx. square feet: 3,400
Stories: 2
Bedrooms: 4

Garage: 3-car
Plan Number: P34C

Floor Plan
First Floor



Floor Plan
Second Floor



**THIS PLAN'S PROJECTED
HERS® INDEX = 61** *
Projected Rating Based on Plans – Field Confirmation Required

How does this floor plan rate?
Take a look: **100** = Standard new home* **130** = Typical resale home**
The lower the number, the better! Refer to the RESNET® HERS index brochure or go to www.RESNET.us for details.

What's a HERS® Index? HERS stands for Home Energy Rating System, a system created by RESNET® to measure home energy efficiency.[^]
A Projected HERS index or rating is a computer simulation performed prior to construction by a third-party HERS rater using RESNET-accredited rating software, rated feature and specification data derived from home plans, features and specifications, and other data selected or assumed by the rater. The projected HERS index is approximate and is subject to change without notice. Actual results will vary.

*This information is presented for education purposes only. The HERS index for a confirmed rating will be determined by a third-party HERS rater based on data gathered from on-site observations and, if required, testing of rated features for a home as featured, optioned, located, oriented and/or built.
+Standard new home is based on the RESNET® Reference Home definition with a HERS® index of 100 (based on the 2006 International Energy Conservation Code).
++Typical resale home is based on the U.S. Department of Energy definition with a HERS® index of 130.

[^]RESNET® has developed the HERS® index to indicate the comparative efficiencies of homes. It is no guarantee that energy efficiencies will be achieved.