

Paseo at Riverwalk Vista
TAYLOR



Elevation A

Approx. square feet: 2,350
Stories: 2
Bedrooms: 3 - 5
Garage: 3-car tandem
Plan Number: S559

The thoughtful Taylor plan offers a spacious great room, an open dining room and an inviting kitchen with central island. You'll also appreciate the convenient powder room and generous den, which can be optioned as a fifth bedroom. Upstairs, the master suite features a private bath and an immense walk-in closet, and three additional bedrooms provide ample space for rest and relaxation.

Available elevations:



Elevation A



Elevation B



Elevation C

COMMUNITY LOCATION

10860 Rio Grande Lane
Riverside, CA 92503
951-351-1112

HOME GALLERY

5171 California Avenue, Suite 110
Irvine, CA 92617
800-852-9714



COMMUNITY LOCATION

10860 Rio Grande Lane
Riverside, CA 92503
951-351-1112

HOME GALLERY

5171 California Avenue, Suite 110
Irvine, CA 92617
800-852-9714

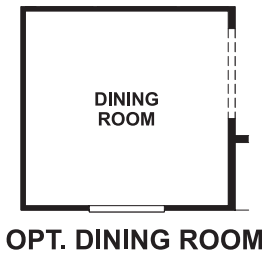
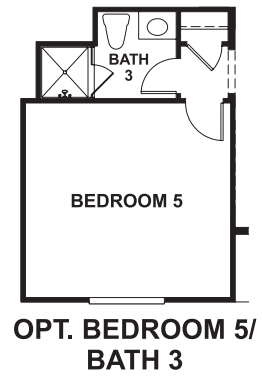
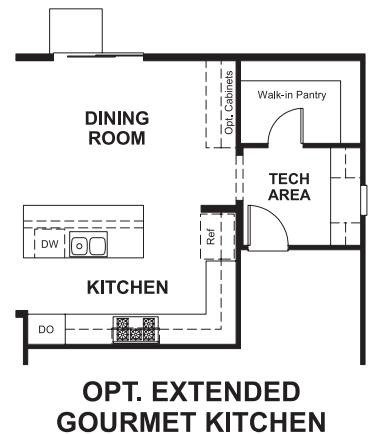
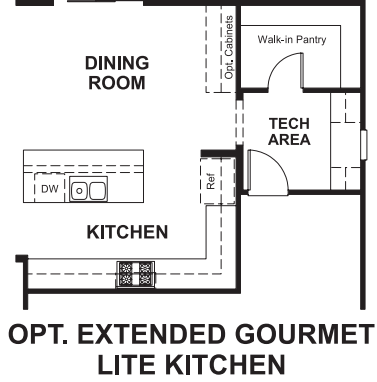
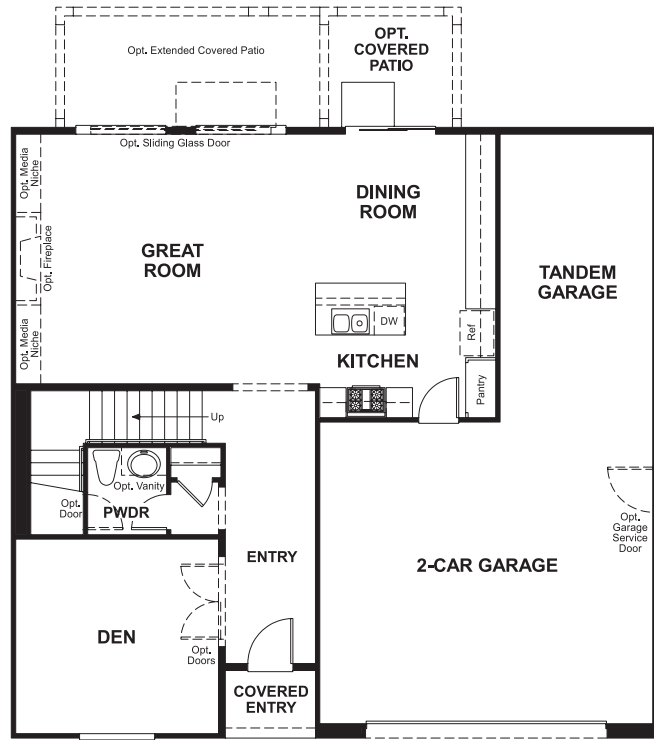
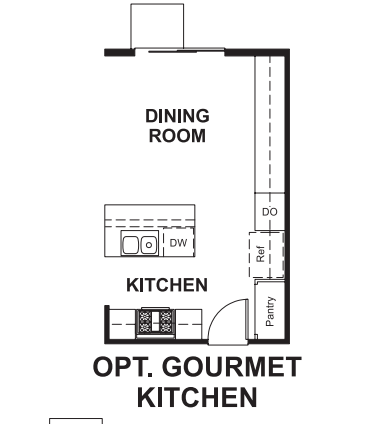
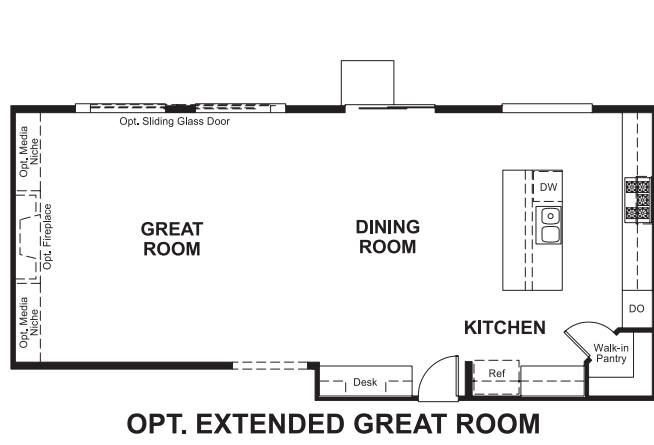


Paseo at Riverwalk Vista
TAYLOR

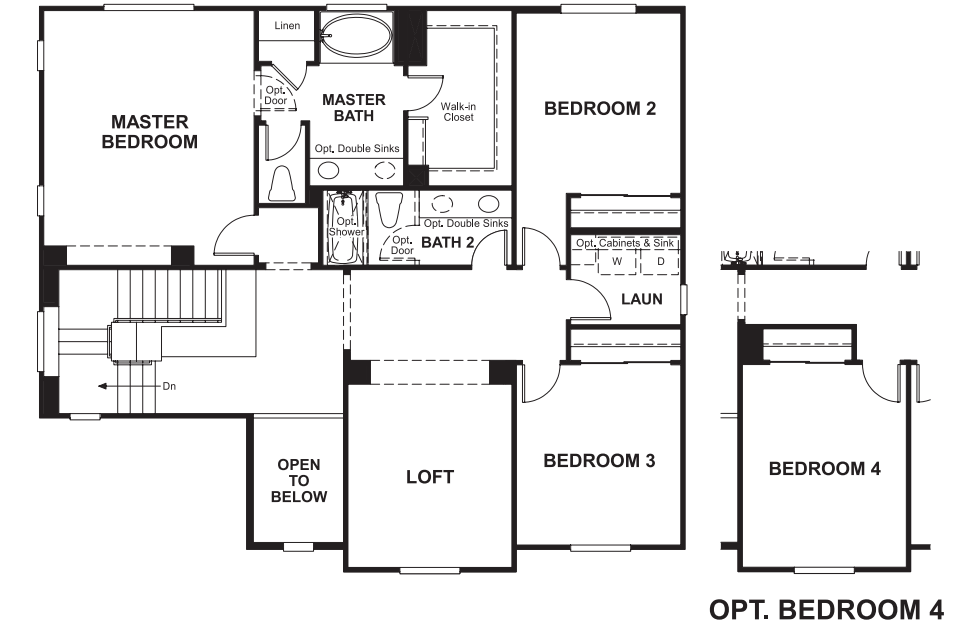
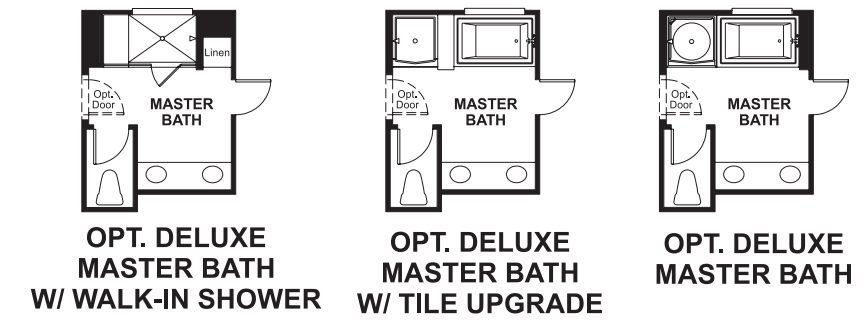
Approx. square feet: 2,350
Stories: 2
Bedrooms: 3 - 5

Garage: 3-car tandem
Plan Number: S559

Floor Plan
Main Floor



Floor Plan
Second Floor



**THIS PLAN'S PROJECTED
HERS® INDEX = 68***
Projected Rating Based on Plans – Field Confirmation Required

How does this floor plan rate?
Take a look: **100** = Standard new home* **130** = Typical resale home**
The lower the number, the better! Refer to the RESNET® HERS index brochure or go to www.RESNET.us for details.

What's a HERS® Index? HERS stands for Home Energy Rating System, a system created by RESNET® to measure home energy efficiency.[^]
A Projected HERS index or rating is a computer simulation performed prior to construction by a third-party HERS rater using RESNET-accredited rating software, rated feature and specification data derived from home plans, features and specifications, and other data selected or assumed by the rater. The projected HERS index is approximate and is subject to change without notice. Actual results will vary.

*This information is presented for education purposes only. The HERS index for a confirmed rating will be determined by a third-party HERS rater based on data gathered from on-site observations and, if required, testing of rated features for a home as featured, optioned, located, oriented and/or built.
+Standard new home is based on the RESNET® Reference Home definition with a HERS® index of 100 (based on the 2006 International Energy Conservation Code).
++Typical resale home is based on the U.S. Department of Energy definition with a HERS® index of 130.

[^]RESNET® has developed the HERS® index to indicate the comparative efficiencies of homes. It is no guarantee that energy efficiencies will be achieved.