

The Preserve at Laguna Ridge
TIMOTHY



Elevation A - Spanish

Available elevations:



Elevation A - Spanish



Elevation B - Italian



Elevation C - French Country

Approx. square feet: 2,300

Stories: 1

Bedrooms: 3

Garage: 2-car

Plan Number: N23T

Walk-in closets in every bedroom and an enormous walk-in pantry in the kitchen give the Timothy plan ample storage space to match its comfortable living areas. Personalize your plan with options like a deluxe bath, a bedroom or dining room in lieu of the study, and a gourmet kitchen.

COMMUNITY LOCATION

9996 Avocado Drive
Elk Grove, CA 95757

HOME GALLERY

One Harbor Center, Suite 150
Suisun City, CA 94533
707-416-2800



COMMUNITY LOCATION

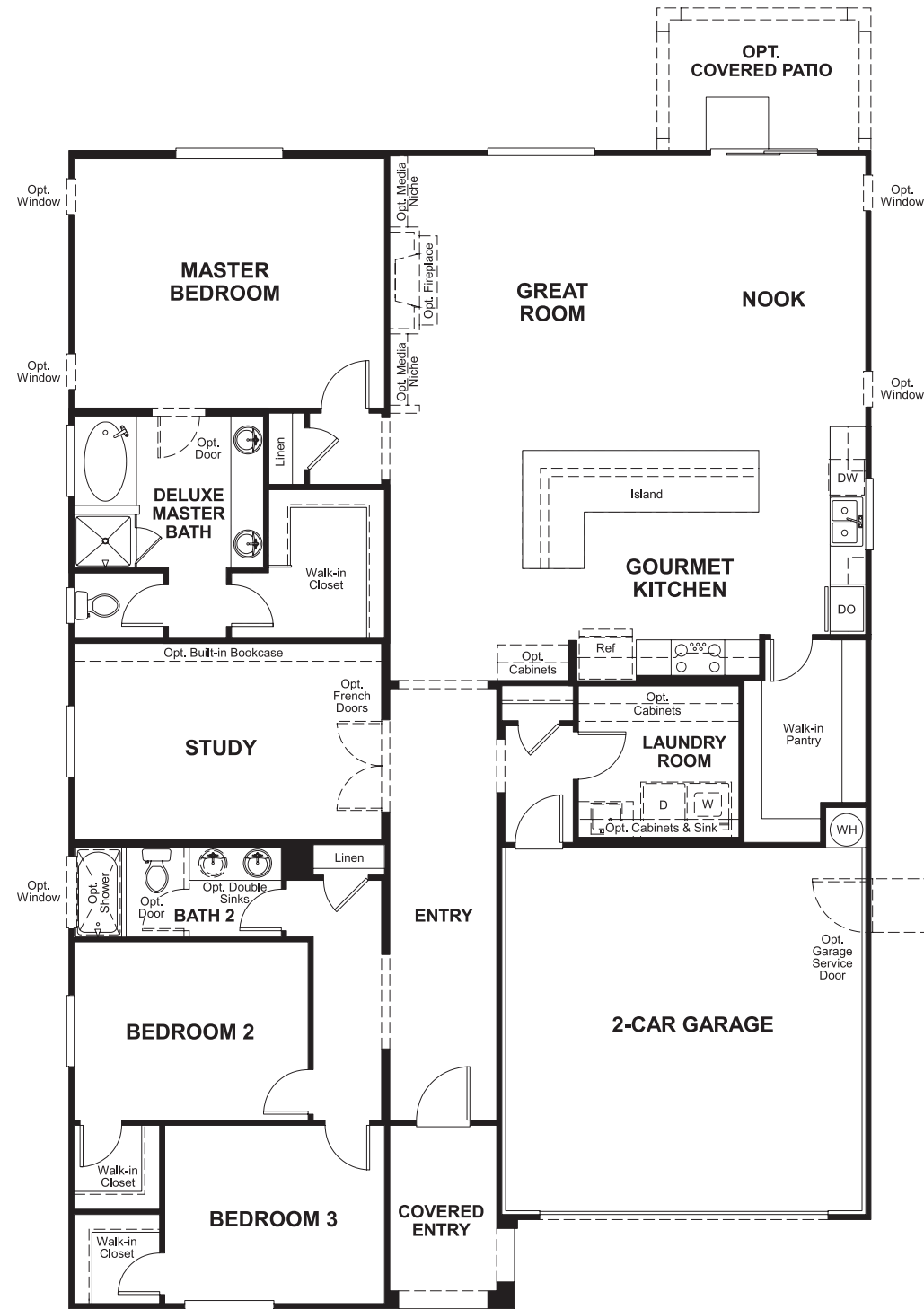
9996 Avocado Drive
Elk Grove, CA 95757

HOME GALLERY

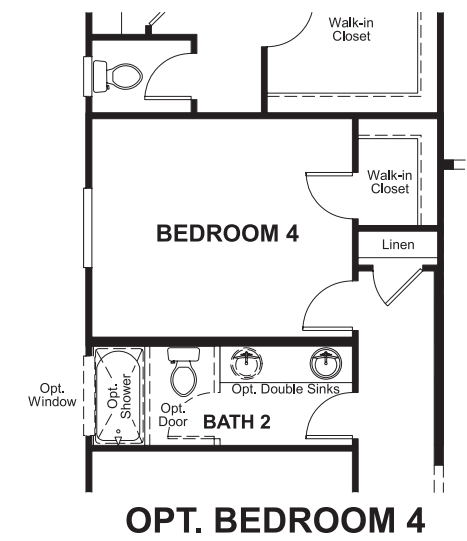
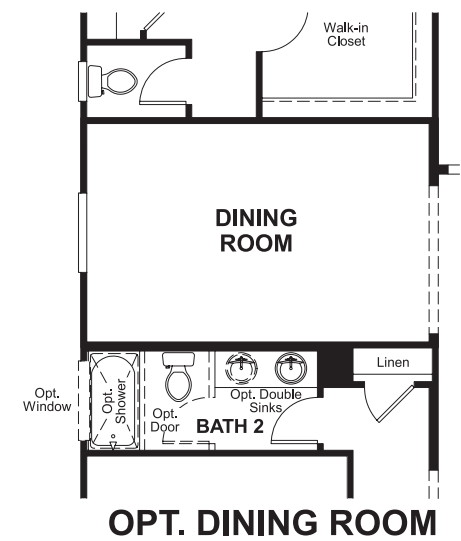
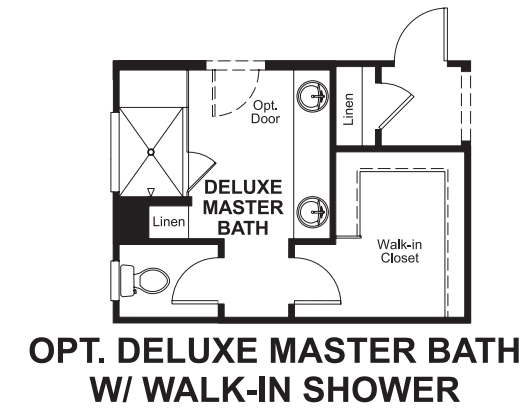
One Harbor Center, Suite 150
Suisun City, CA 94533
707-416-2800



Floor Plan
Main Floor



Floor Plan
Main Floor Options



**THIS PLAN'S PROJECTED
HERS® INDEX = 68***
Projected Rating Based on Plans – Field Confirmation Required

How does this floor plan rate?
Take a look: **100** = Standard new home* **130** = Typical resale home**
The lower the number, the better! Refer to the RESNET® HERS index brochure or go to www.RESNET.us for details.

What's a HERS® Index? HERS stands for Home Energy Rating System, a system created by RESNET® to measure home energy efficiency.[^]
A Projected HERS index or rating is a computer simulation performed prior to construction by a third-party HERS rater using RESNET-accredited rating software, rated feature and specification data derived from home plans, features and specifications, and other data selected or assumed by the rater. The projected HERS index is approximate and is subject to change without notice. Actual results will vary.

*This information is presented for education purposes only. The HERS index for a confirmed rating will be determined by a third-party HERS rater based on data gathered from on-site observations and, if required, testing of rated features for a home as featured, optioned, located, oriented and/or built.
+Standard new home is based on the RESNET® Reference Home definition with a HERS® index of 100 (based on the 2006 International Energy Conservation Code).
++Typical resale home is based on the U.S. Department of Energy definition with a HERS® index of 130.

[^]RESNET® has developed the HERS® index to indicate the comparative efficiencies of homes. It is no guarantee that energy efficiencies will be achieved.