

Connor Heights
TRACY



Elevation A

Available elevations:



Elevation A



Elevation B



Elevation C

Approx. square feet: 3,450
Stories: 2
Bedrooms: 4 - 6
Garage: 3-car
Plan Number: L34T

In addition to the gourmet kitchen, the versatile Tracy plan offers an optional main-floor bedroom and full bath in lieu of the study and powder room, an upstairs bedroom and bath in place of the loft and an optional dining room with butler's pantry.

COMMUNITY LOCATION

Deer Springs Way and Grand Canyon Drive
Las Vegas, NV 89149
702-638-4440

HOME GALLERY

7770 South Dean Martin Drive
Las Vegas, NV 89129
702-617-8400



COMMUNITY LOCATION

Deer Springs Way and Grand Canyon Drive
Las Vegas, NV 89149
702-638-4440

HOME GALLERY

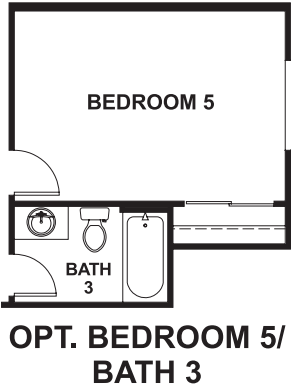
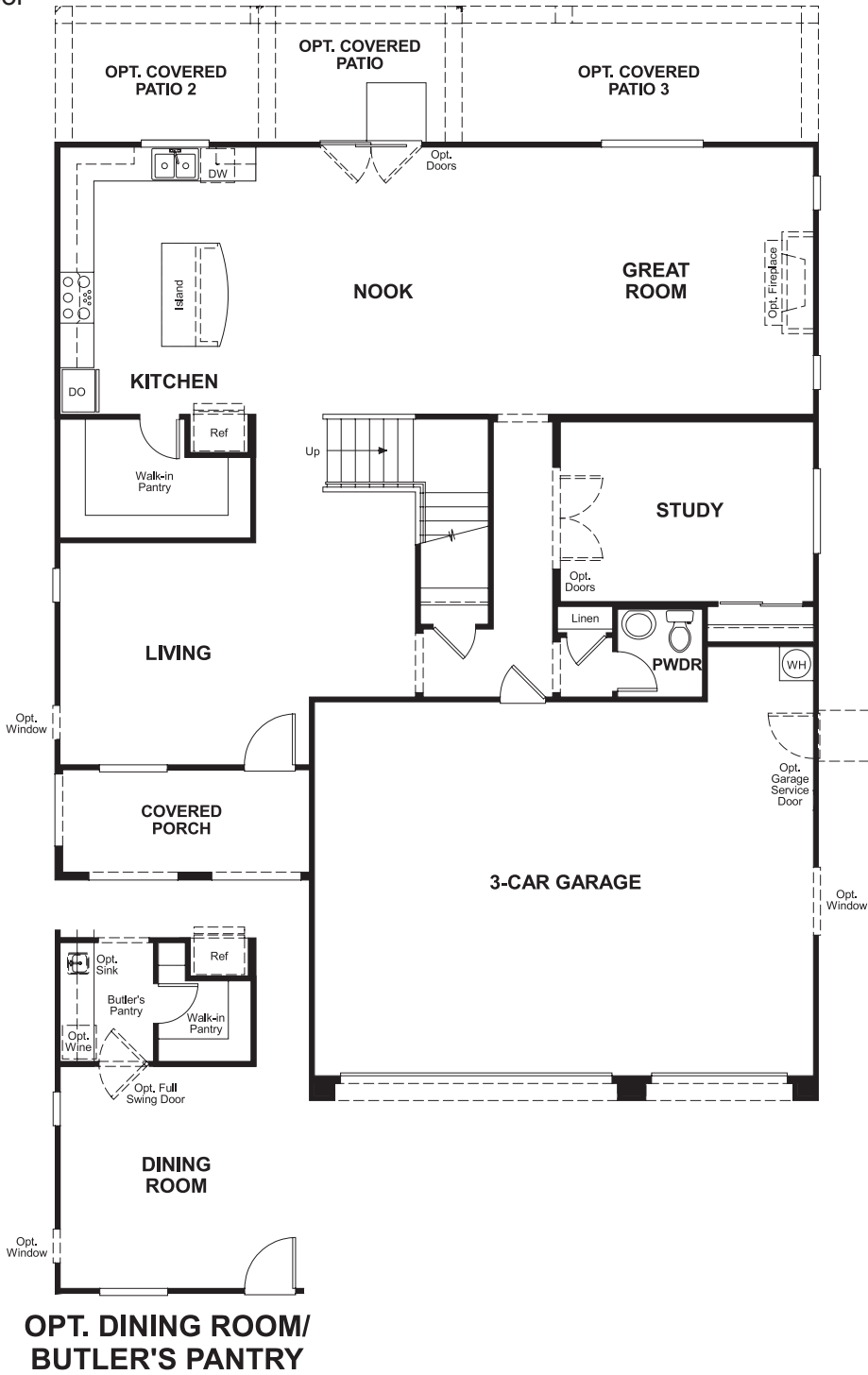
7770 South Dean Martin Drive
Las Vegas, NV 89129
702-617-8400



Connor Heights
TRACY

Approx. square feet: 3,450
Stories: 2
Bedrooms: 4 - 6
Garage: 3-car
Plan Number: L34T

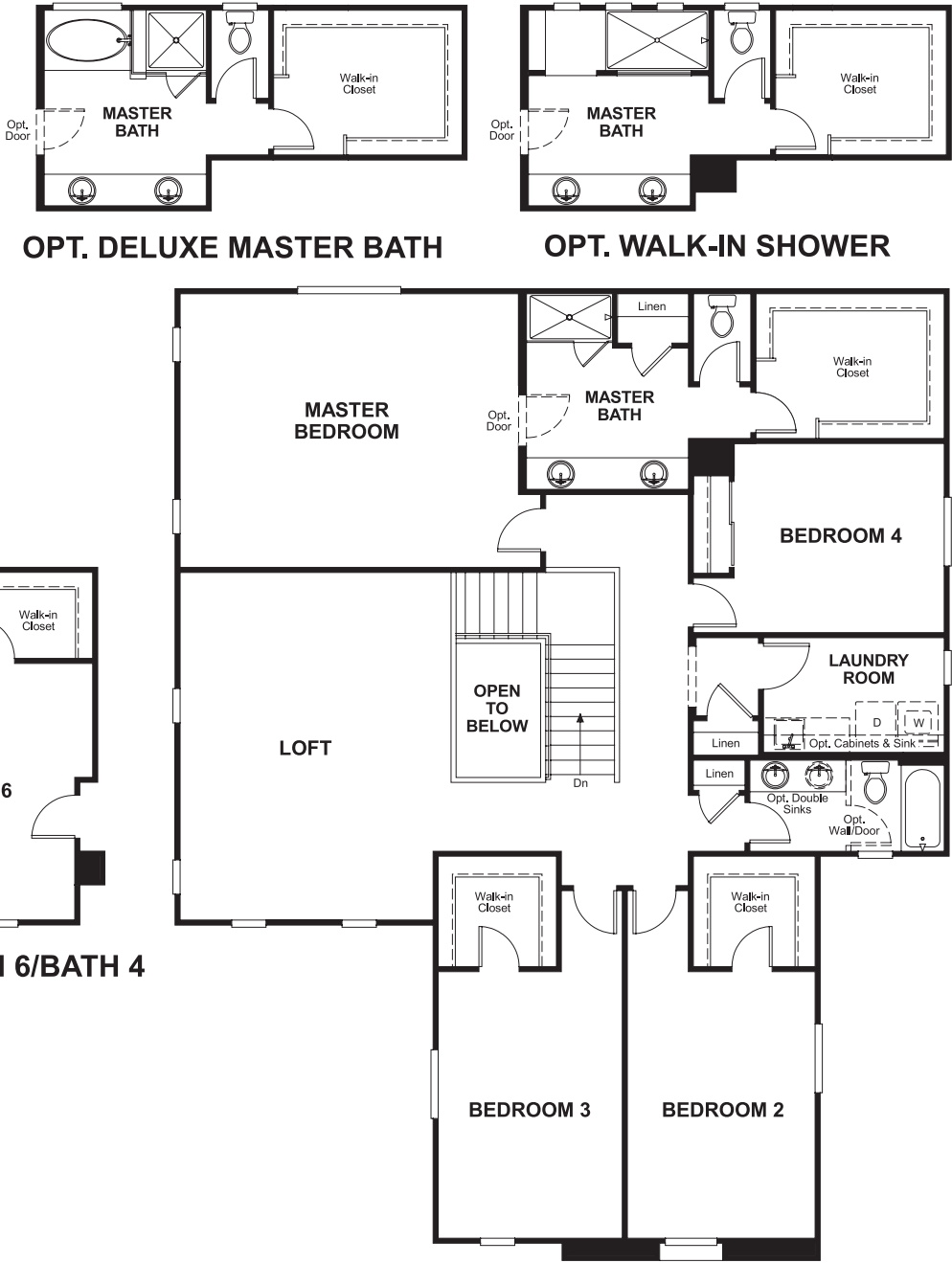
Floor Plan
Main Floor



**THIS PLAN'S PROJECTED
HERS® INDEX = 63 ***
Projected Rating Based on Plans – Field Confirmation Required

How does this floor plan rate?
Take a look: **100** = Standard new home* **130** = Typical resale home**
The lower the number, the better! Refer to the RESNET® HERS index brochure or go to www.RESNET.us for details.

Floor Plan
Second Floor



What's a HERS® Index? HERS stands for Home Energy Rating System, a system created by RESNET® to measure home energy efficiency.^
A Projected HERS index or rating is a computer simulation performed prior to construction by a third-party HERS rater using RESNET-accredited rating software, rated feature and specification data derived from home plans, features and specifications, and other data selected or assumed by the rater. The projected HERS index is approximate and is subject to change without notice. Actual results will vary.

*This information is presented for education purposes only. The HERS index for a confirmed rating will be determined by a third-party HERS rater based on data gathered from on-site observations and, if required, testing of rated features for a home as featured, optioned, located, oriented and/or built.
+Standard new home is based on the RESNET® Reference Home definition with a HERS® index of 100 (based on the 2006 International Energy Conservation Code).
++Typical resale home is based on the U.S. Department of Energy definition with a HERS® index of 130.

^RESNET® has developed the HERS® index to indicate the comparative efficiencies of homes. It is no guarantee that energy efficiencies will be achieved.