

Sycamore at Spencer's Crossing
TRACY



Elevation A

Available elevations:



Elevation A



Elevation B



Elevation C

Approx. square feet: 3,450

Stories: 2

Bedrooms: 5 - 6

Garage: 3-car

Plan Number: S24T

The main floor of the Tracy plan is anchored by an expansive great room that flows into an open nook and kitchen with a center island, walk-in pantry and optional gourmet features. You'll also appreciate the formal living room, convenient bedroom and full bath. Upstairs, enjoy a lavish master suite, three generous bedrooms and a versatile loft. Personalization options include a covered patio, great room fireplace, study and a formal dining room with butler's pantry in lieu of the living room.

COMMUNITY LOCATION

35355 Weather Way
Murrieta, CA 92563
909-579-3288

HOME GALLERY

5171 California Ave
Irvine, CA 92617
949-467-2600



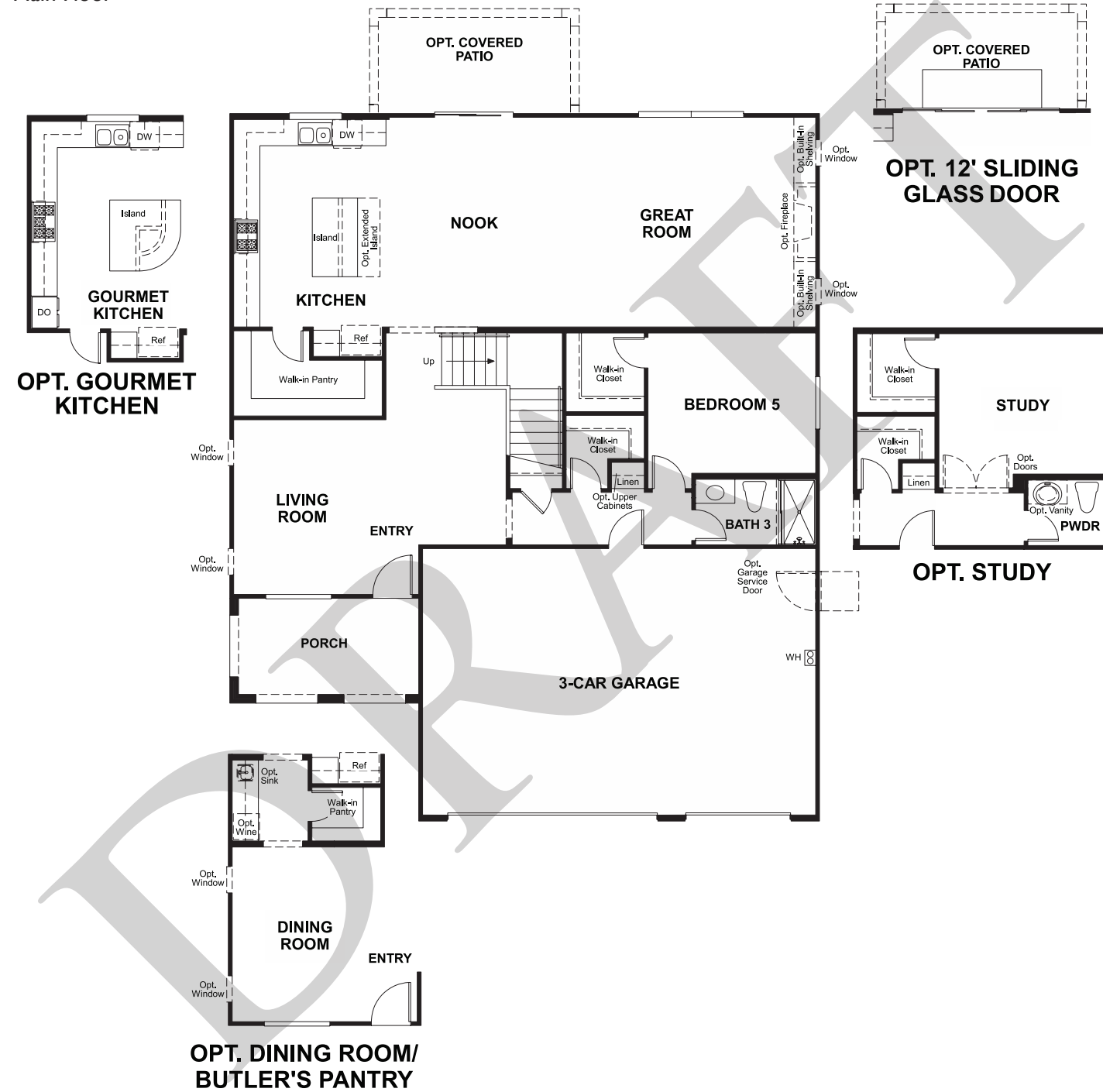
COMMUNITY LOCATION

35355 Weather Way
Murrieta, CA 92563
909-579-3288

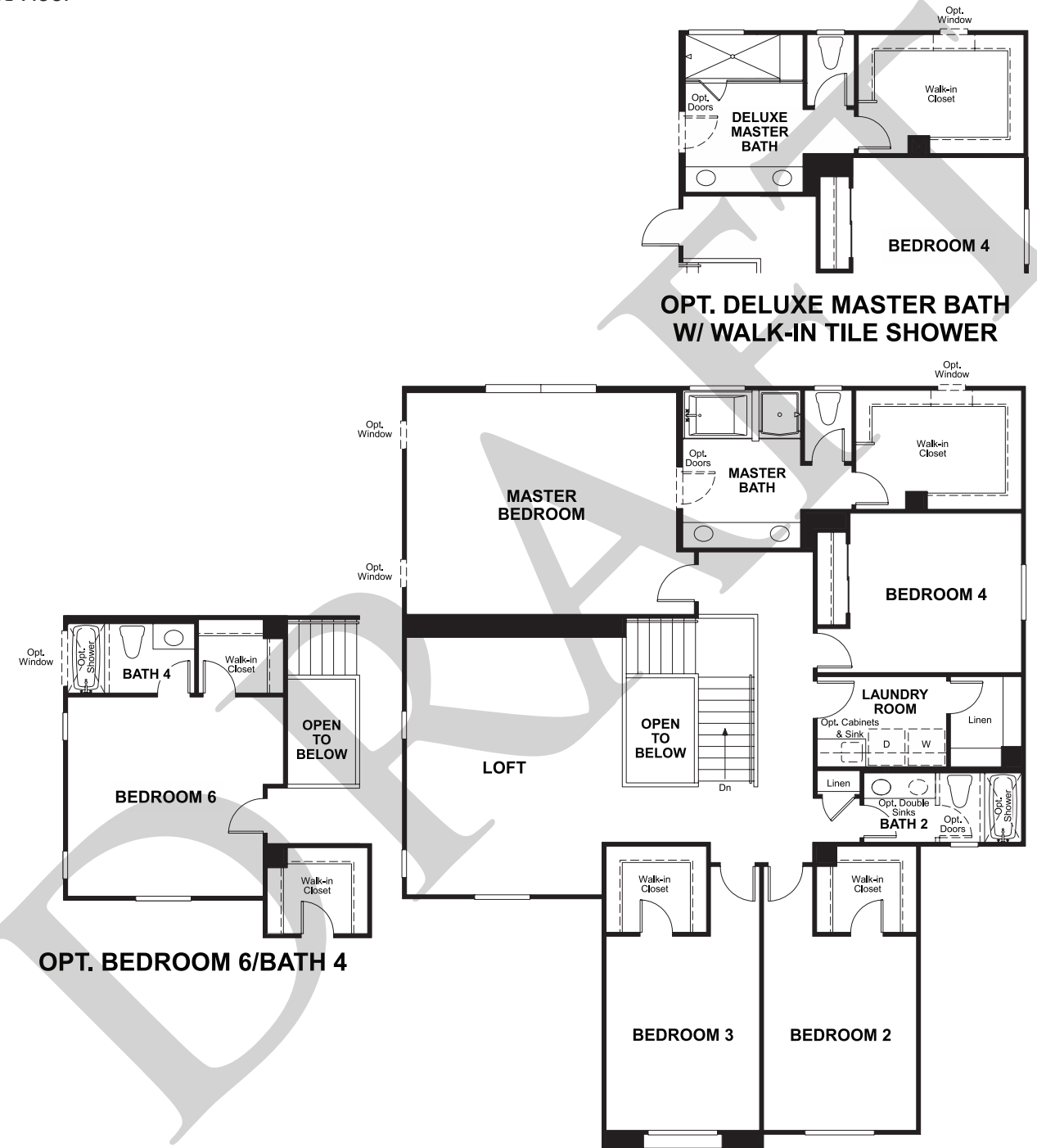
HOME GALLERY

5171 California Ave
Irvine, CA 92617
949-467-2600

Floor Plan
Main Floor



Floor Plan
Second Floor



**THIS PLAN'S PROJECTED
HERS® INDEX = 68***
Projected Rating Based on Plans – Field Confirmation Required

How does this floor plan rate?
Take a look: **100** = Standard new home* **130** = Typical resale home**
The lower the number, the better! Refer to the RESNET® HERS index brochure or go to www.RESNET.us for details.

What's a HERS® Index? HERS stands for Home Energy Rating System, a system created by RESNET® to measure home energy efficiency.[^]
A Projected HERS index or rating is a computer simulation performed prior to construction by a third-party HERS rater using RESNET-accredited rating software, rated feature and specification data derived from home plans, features and specifications, and other data selected or assumed by the rater. The projected HERS index is approximate and is subject to change without notice. Actual results will vary.

*This information is presented for education purposes only. The HERS index for a confirmed rating will be determined by a third-party HERS rater based on data gathered from on-site observations and, if required, testing of rated features for a home as featured, optioned, located, oriented and/or built.
+Standard new home is based on the RESNET® Reference Home definition with a HERS® index of 100 (based on the 2006 International Energy Conservation Code).
++Typical resale home is based on the U.S. Department of Energy definition with a HERS® index of 130.

[^]RESNET® has developed the HERS® index to indicate the comparative efficiencies of homes. It is no guarantee that energy efficiencies will be achieved.