

Steeplechase
TRENT



Elevation A

Available elevations:



Elevation A



Elevation B



Elevation C

Approx. square feet: 2,800
Stories: 2
Bedrooms: 3
Garage: 3-car tandem
Plan Number: S28T

The main floor of the Trent plan features an open dining room, a massive great room with an optional fireplace and a private study that can be optioned as an extra bedroom. This inviting plan also offers a charming kitchen with a built-in pantry and optional gourmet features. Upstairs, you'll find three large bedrooms, including a luxurious master suite with an optional deluxe bath, plus a roomy loft.

COMMUNITY LOCATION
4665 Formosa Way
Perris, CA 92551
800-852-9714

HOME GALLERY
5171 California Avenue, Suite 110
Irvine, CA 92617
800-852-9714



COMMUNITY LOCATION
4665 Formosa Way
Perris, CA 92551
800-852-9714

HOME GALLERY
5171 California Avenue, Suite 110
Irvine, CA 92617
800-852-9714

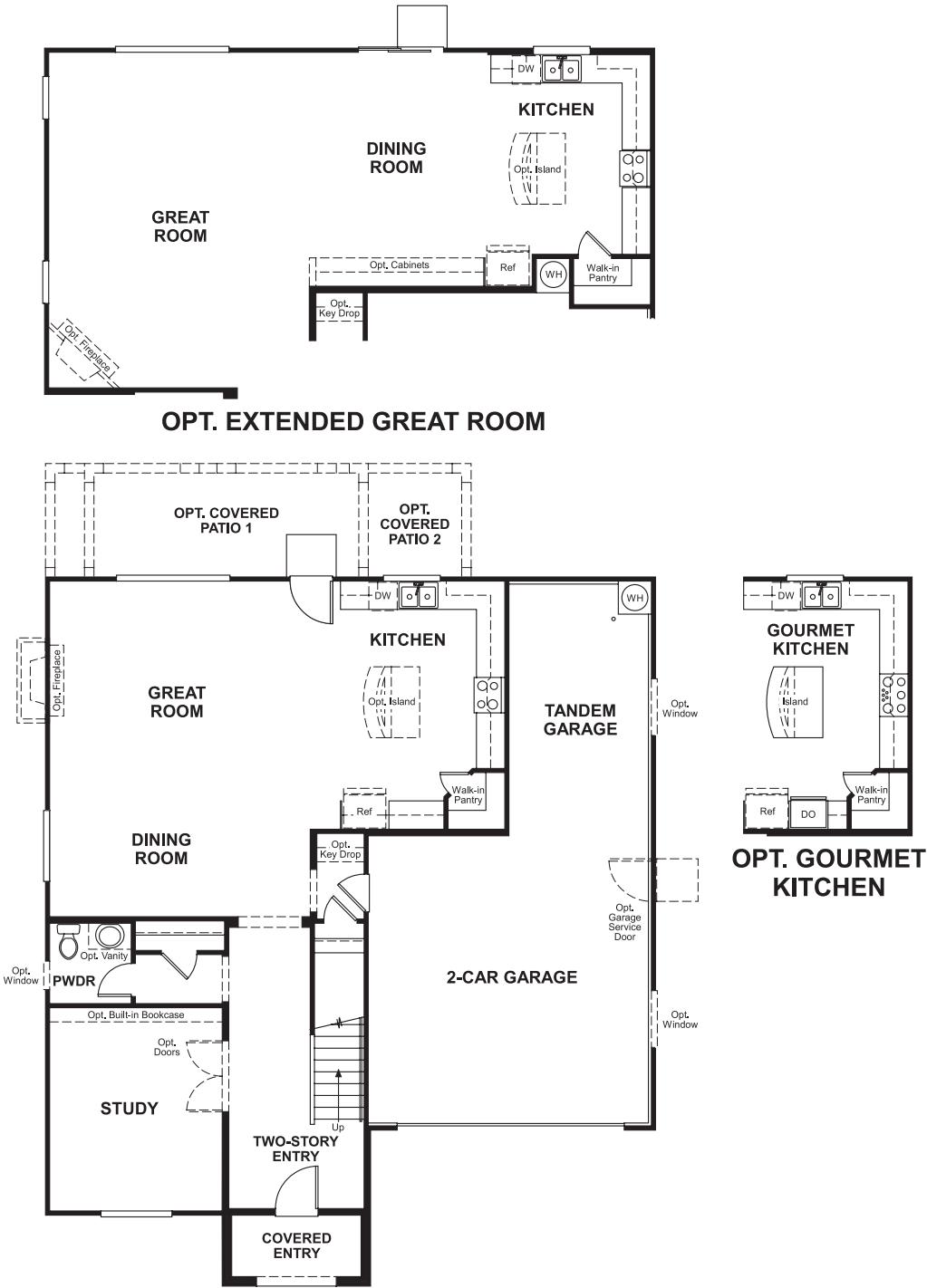


Steeplechase
TRENT

Approx. square feet: 2,800
Stories: 2
Bedrooms: 3

Garage: 3-car tandem
Plan Number: S28T

Floor Plan
Main Floor



**THIS PLAN'S PROJECTED
HERS® INDEX = 74 ***
Projected Rating Based on Plans – Field Confirmation Required

How does this floor plan rate?
Take a look: **100** = Standard new home* **130** = Typical resale home**
The lower the number, the better! Refer to the RESNET® HERS index brochure or go to www.RESNET.us for details.

Floor Plan
Second Floor



What's a HERS® Index? HERS stands for Home Energy Rating System, a system created by RESNET® to measure home energy efficiency.^
A Projected HERS index or rating is a computer simulation performed prior to construction by a third-party HERS rater using RESNET-accredited rating software, rated feature and specification data derived from home plans, features and specifications, and other data selected or assumed by the rater. The projected HERS index is approximate and is subject to change without notice. Actual results will vary.

*This information is presented for education purposes only. The HERS index for a confirmed rating will be determined by a third-party HERS rater based on data gathered from on-site observations and, if required, testing of rated features for a home as featured, optioned, located, oriented and/or built.
+Standard new home is based on the RESNET® Reference Home definition with a HERS® index of 100 (based on the 2006 International Energy Conservation Code).
++Typical resale home is based on the U.S. Department of Energy definition with a HERS® index of 130.

^RESNET® has developed the HERS® index to indicate the comparative efficiencies of homes. It is no guarantee that energy efficiencies will be achieved.