

The Preserve at Laguna Ridge
TREVOR



Elevation A - Spanish

Available elevations:



Elevation A - Spanish



Elevation B - Italian



Elevation C - French Country

Approx. square feet: 3,100-3,350

Stories: 2

Bedrooms: 4

Garage: 3-car tandem

Plan Number: N31T

This two-story plan offers many opportunities to personalize! On the main floor, the study can be optioned as an extra bedroom. Additional bedrooms can be added in lieu of the 3-car tandem garage and loft. You'll also enjoy a large walk-in pantry, a spacious upstairs master suite and three inviting bedrooms with walk-in closets.

COMMUNITY LOCATION

9996 Avocado Drive
Elk Grove, CA 95757

HOME GALLERY

One Harbor Center, Suite 150
Suisun City, CA 94533
707-416-2800



COMMUNITY LOCATION

9996 Avocado Drive
Elk Grove, CA 95757

HOME GALLERY

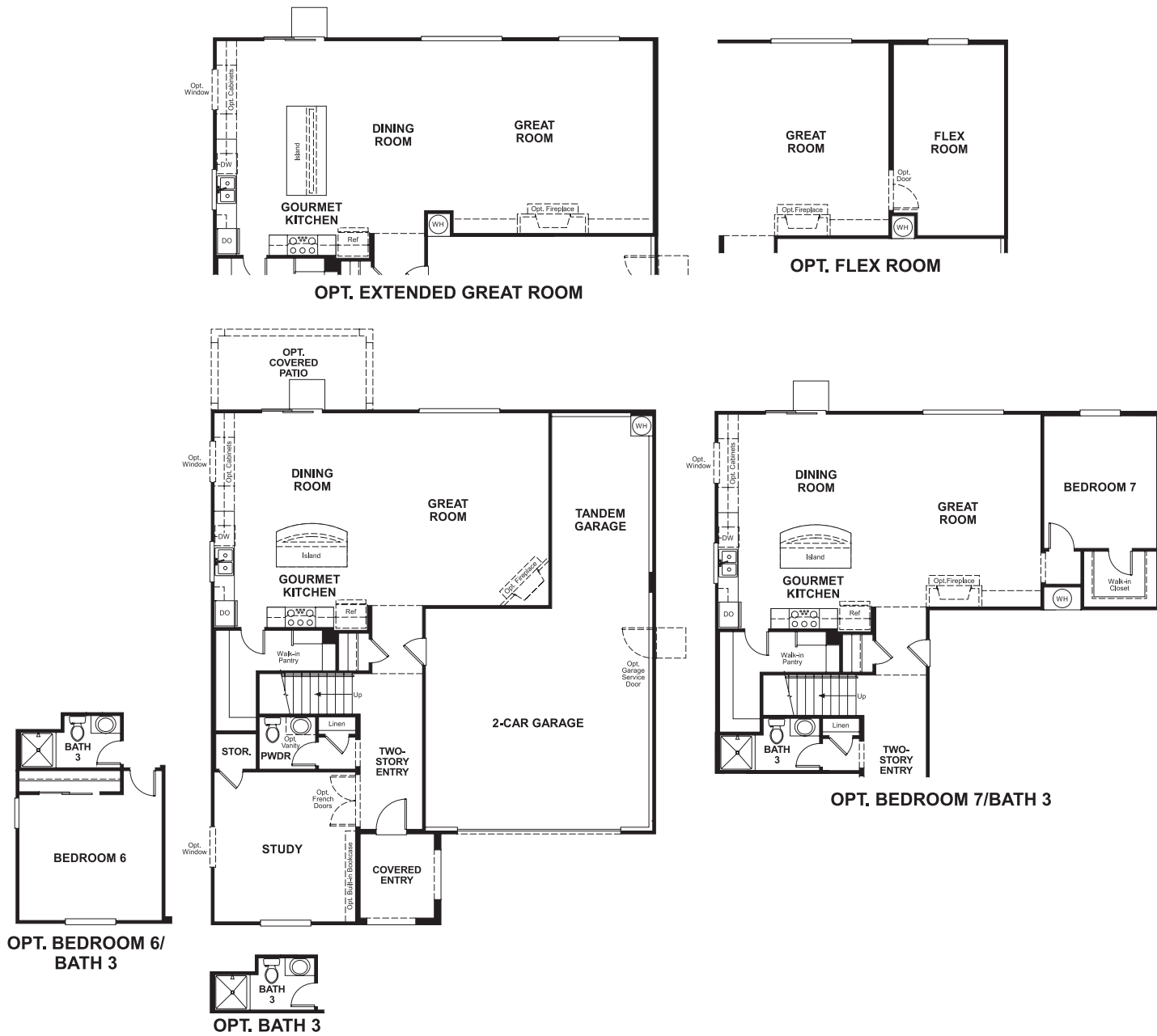
One Harbor Center, Suite 150
Suisun City, CA 94533
707-416-2800

The Preserve at Laguna Ridge
TREVOR

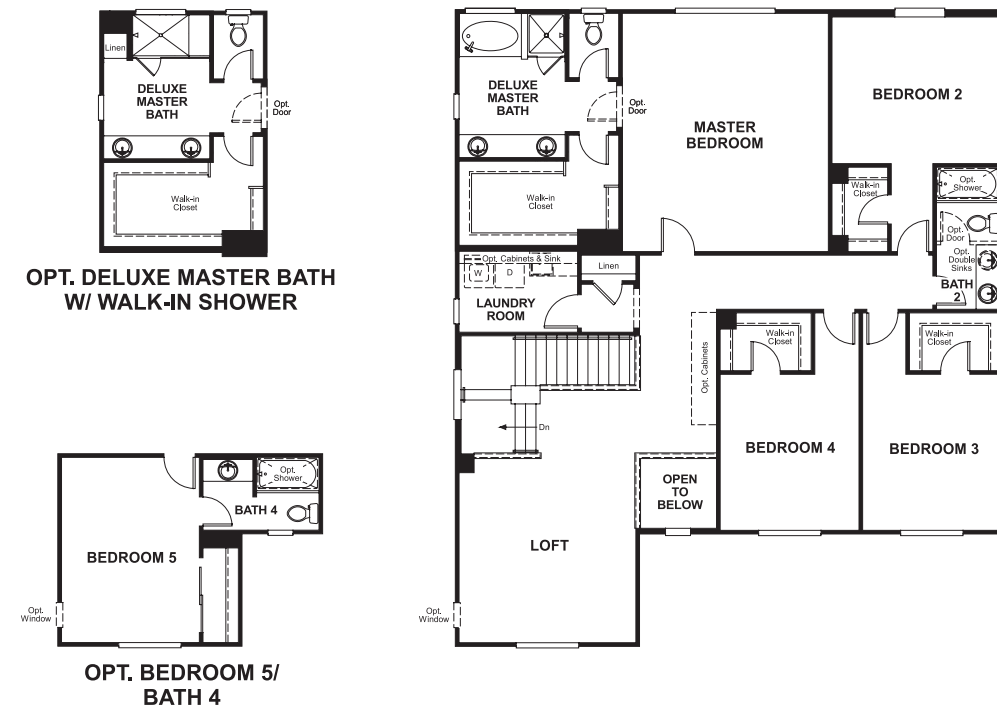
Approx. square feet: 3,100-3,350
Stories: 2
Bedrooms: 4

Garage: 3-car tandem
Plan Number: N31T

Floor Plan
Main Floor



Floor Plan
Second Floor



**THIS PLAN'S PROJECTED
HERS® INDEX = 65***
Projected Rating Based on Plans – Field Confirmation Required

How does this floor plan rate?
Take a look: **100** = Standard new home* **130** = Typical resale home**
The lower the number, the better! Refer to the RESNET® HERS index brochure or go to www.RESNET.us for details.

What's a HERS® Index? HERS stands for Home Energy Rating System, a system created by RESNET® to measure home energy efficiency. A Projected HERS index or rating is a computer simulation performed prior to construction by a third-party HERS rater using RESNET-accredited rating software, rated feature and specification data derived from home plans, features and specifications, and other data selected or assumed by the rater. The projected HERS index is approximate and is subject to change without notice. Actual results will vary.

*This information is presented for education purposes only. The HERS index for a confirmed rating will be determined by a third-party HERS rater based on data gathered from on-site observations and, if required, testing of rated features for a home as featured, optioned, located, oriented and/or built.
+Standard new home is based on the RESNET® Reference Home definition with a HERS® index of 100 (based on the 2006 International Energy Conservation Code).
++Typical resale home is based on the U.S. Department of Energy definition with a HERS® index of 130.

^RESNET® has developed the HERS® index to indicate the comparative efficiencies of homes. It is no guarantee that energy efficiencies will be achieved.