

Littleton Village  
**TRIBECA**

**Approx. square feet:** 1,750  
**Stories:** 3  
**Bedrooms:** 2 - 3

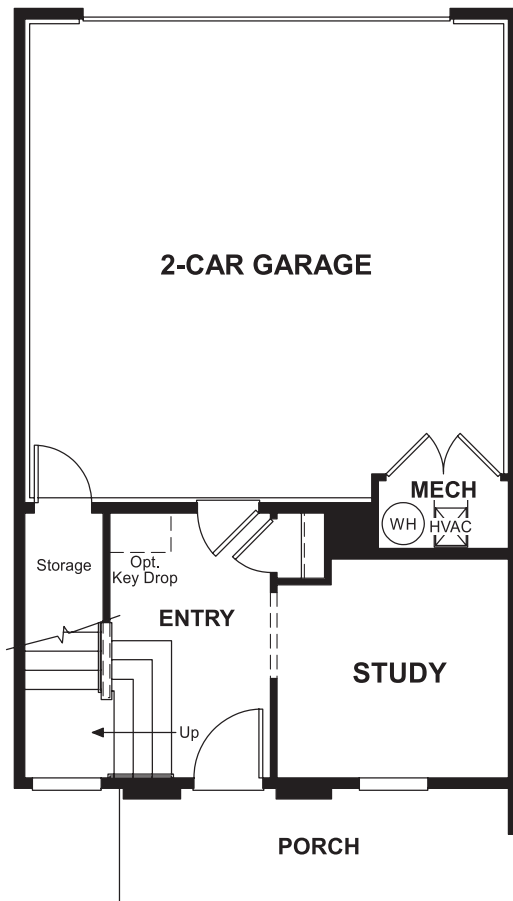
**Garage:** 2-car  
**Plan Number:** D569

Littleton Village  
**TRIBECA**

**Approx. square feet:** 1,750  
**Stories:** 3  
**Bedrooms:** 2 - 3  
**Garage:** 2-car  
**Plan Number:** D569

The main floor of the contemporary, standalone Tribeca floor plan offers a generous living room that flows into a well-appointed kitchen with a spacious center island, adjacent dining room and optional gourmet features. Upstairs, you'll find three inviting bedrooms, including a luxurious master suite with an expansive walk-in closet. Also enjoy a private study on the lower floor, plus options for a second powder room and a loft in lieu of the third bedroom.

**Floor Plan**  
Lower Level



**Elevation A**

**Available elevations:**



**Elevation A**



**Elevation B**

**COMMUNITY LOCATION**  
East Dry Creek and Broadway  
Littleton, CO 80122  
303-850-5750

**HOME GALLERY**  
8000 East Belleview Avenue, Suite C-12  
Greenwood Village, CO 80111  
888-402-4663

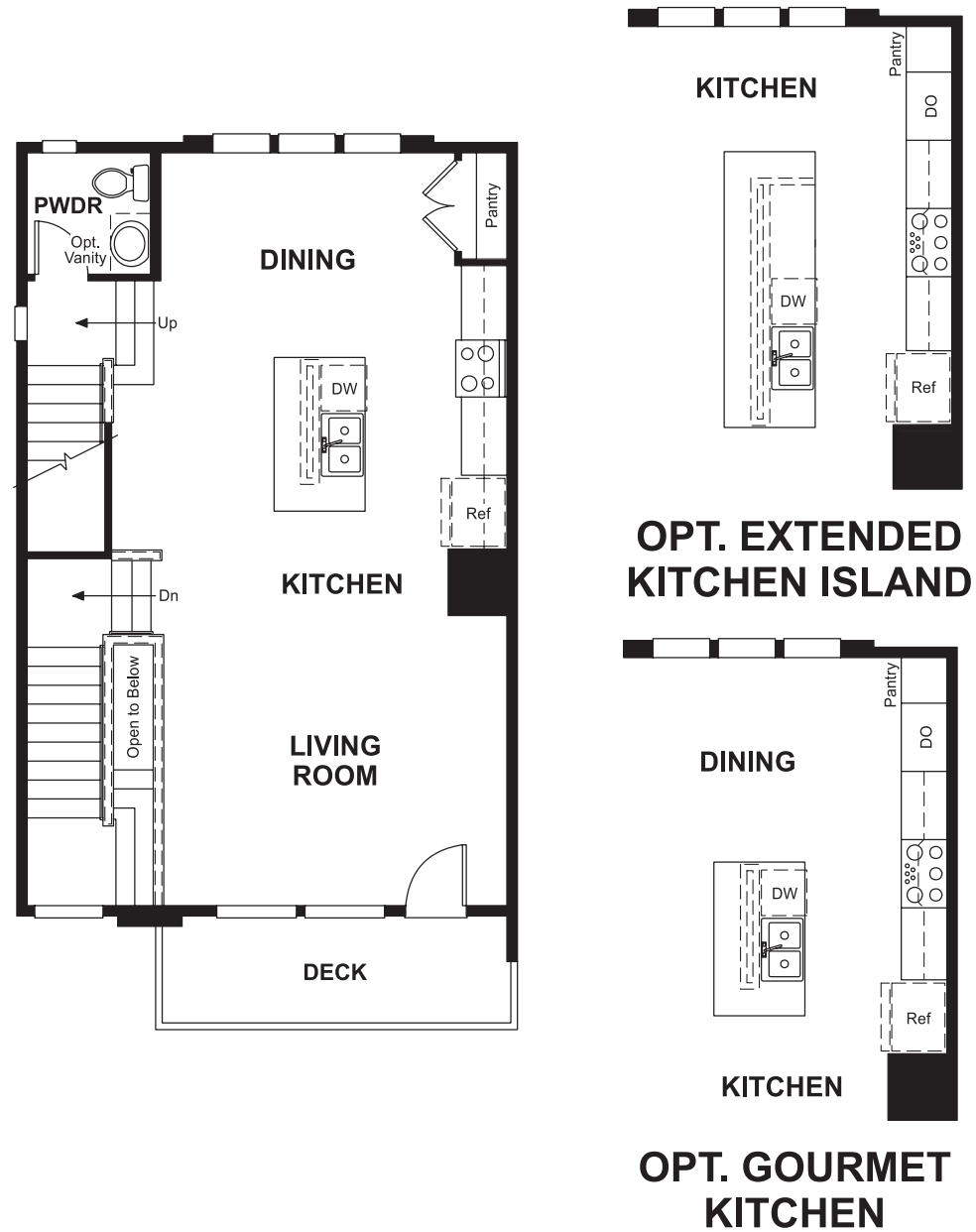


**COMMUNITY LOCATION**  
East Dry Creek and Broadway  
Littleton, CO 80122  
303-850-5750

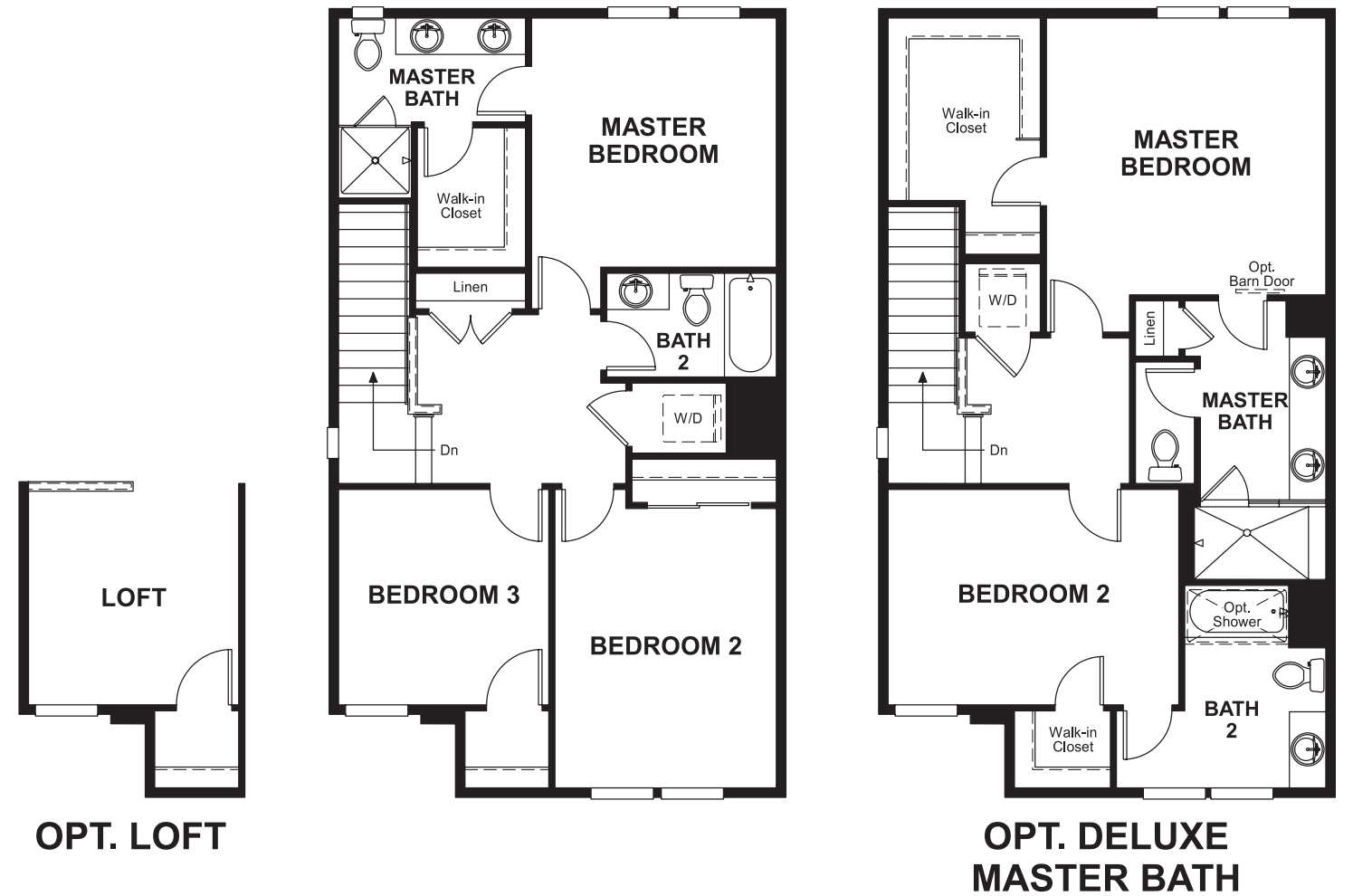
**HOME GALLERY**  
8000 East Belleview Avenue, Suite C-12  
Greenwood Village, CO 80111  
888-402-4663



**Floor Plan**  
Main Floor



**Floor Plan**  
Second Floor



**THIS PLAN'S PROJECTED  
HERS® INDEX = 63\***  
Projected Rating Based on Plans – Field Confirmation Required

**How does this floor plan rate?**  
Take a look: **100** = Standard new home\* **130** = Typical resale home\*\*  
The lower the number, the better! Refer to the RESNET® HERS index brochure or go to [www.RESNET.us](http://www.RESNET.us) for details.

**What's a HERS® Index?** HERS stands for Home Energy Rating System, a system created by RESNET® to measure home energy efficiency.<sup>^</sup>  
A Projected HERS index or rating is a computer simulation performed prior to construction by a third-party HERS rater using RESNET-accredited rating software, rated feature and specification data derived from home plans, features and specifications, and other data selected or assumed by the rater. The projected HERS index is approximate and is subject to change without notice. Actual results will vary.

\*This information is presented for education purposes only. The HERS index for a confirmed rating will be determined by a third-party HERS rater based on data gathered from on-site observations and, if required, testing of rated features for a home as featured, optioned, located, oriented and/or built.  
+Standard new home is based on the RESNET® Reference Home definition with a HERS® index of 100 (based on the 2006 International Energy Conservation Code).  
++Typical resale home is based on the U.S. Department of Energy definition with a HERS® index of 130.

<sup>^</sup>RESNET® has developed the HERS® index to indicate the comparative efficiencies of homes. It is no guarantee that energy efficiencies will be achieved.