

Eagle Crest Ranch  
**TUCSON**



**Elevation A**

**Approx. square feet:** 2,150

**Stories:** 1

**Bedrooms:** 4

**Garage:** 2-car plus tandem

**Plan Number:** T211

The Tucson welcomes you with beautiful living and dining rooms for special occasions, as well as a generous family room for casual entertaining. The master bedroom offers a secluded escape from the other bedrooms. Buyers will also appreciate a tandem garage for additional storage or third car.

**Available elevations:**



**Elevation A**



**Elevation B**



**Elevation C shown with optional stone**



**COMMUNITY LOCATION**

38976 S. Easy Gallup Drive  
Tucson, AZ 85739  
877-346-8102

**HOME GALLERY**

3091 West Ina Road  
Tucson, AZ 85741  
877-346-8102



**COMMUNITY LOCATION**

38976 S. Easy Gallup Drive  
Tucson, AZ 85739  
877-346-8102

**HOME GALLERY**

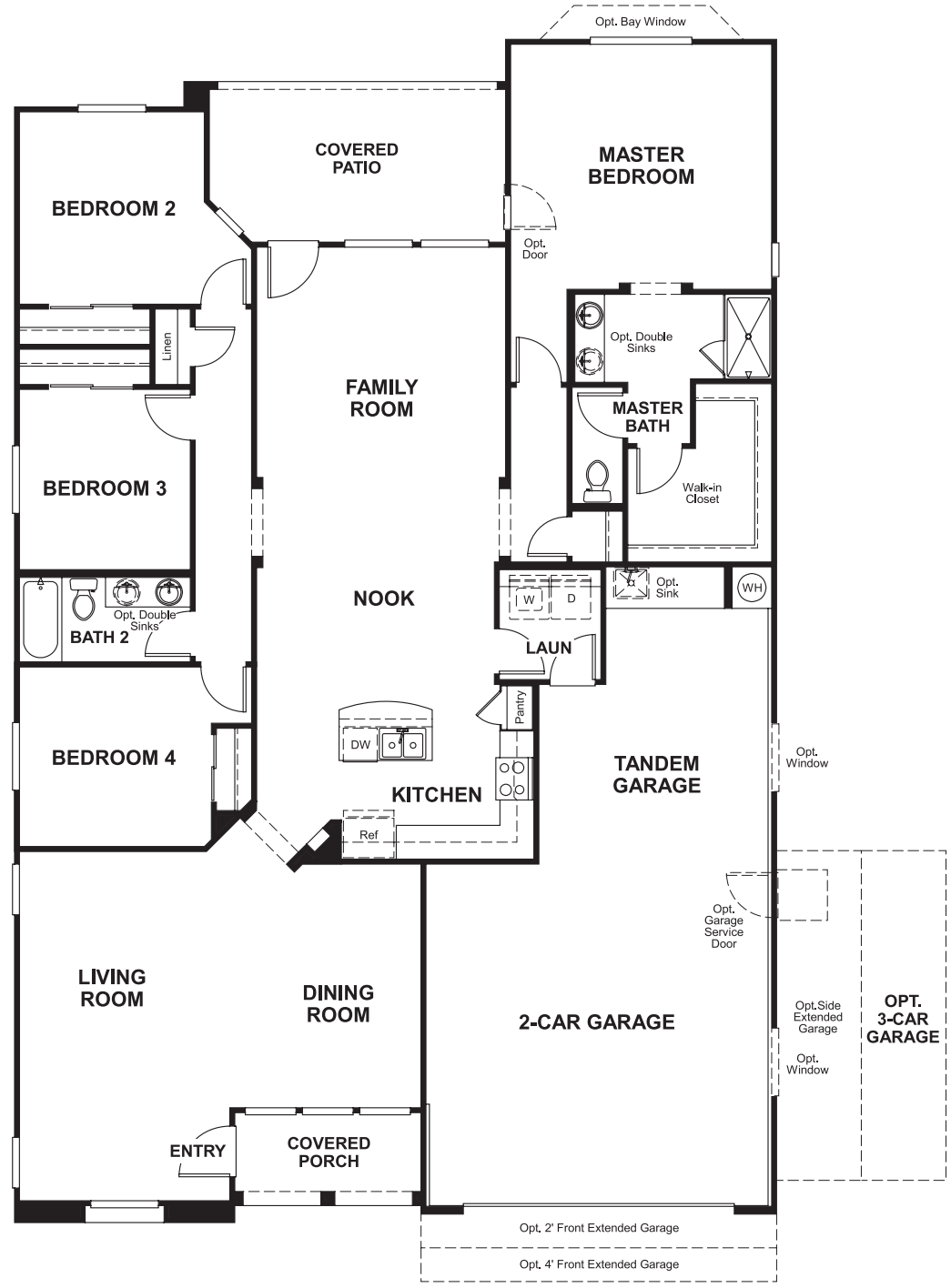
3091 West Ina Road  
Tucson, AZ 85741  
877-346-8102

Eagle Crest Ranch  
**TUCSON**

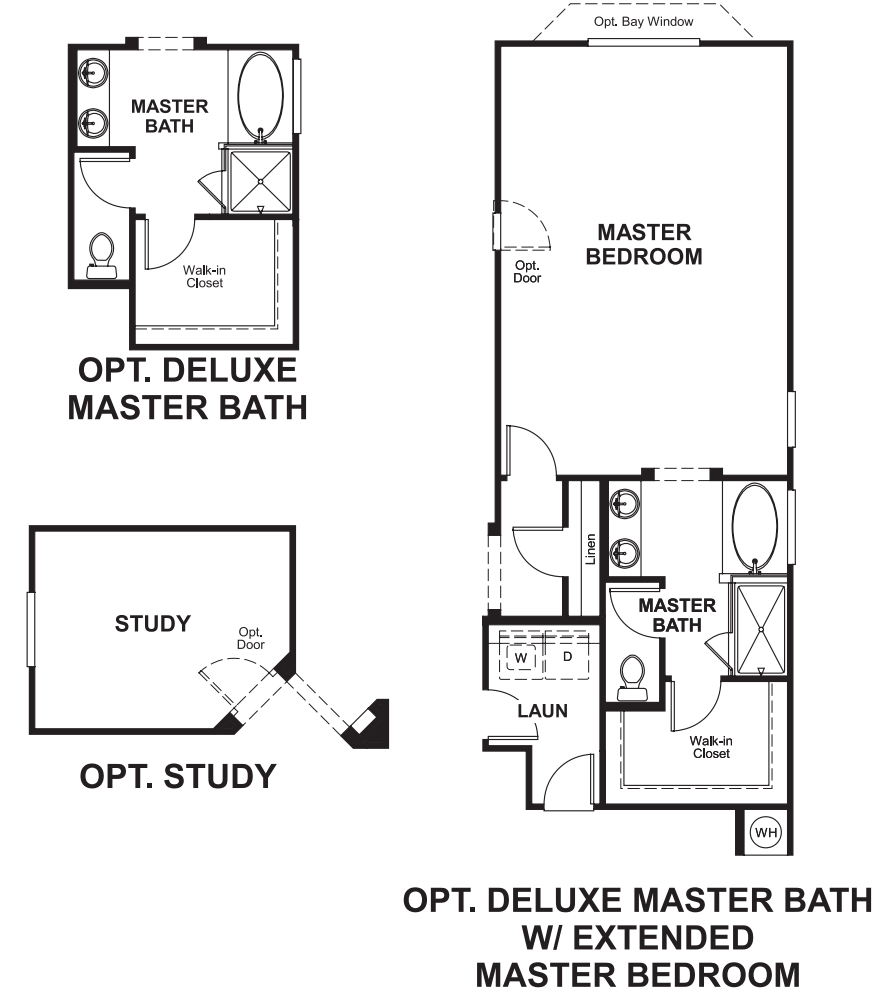
**Approx. square feet:** 2,150  
**Stories:** 1  
**Bedrooms:** 4

**Garage:** 2-car plus tandem  
**Plan Number:** T211

**Floor Plan**  
Main Floor



**Floor Plan**  
Main Floor Options



**THIS PLAN'S PROJECTED HERS® INDEX = 67\***  
Projected Rating Based on Plans – Field Confirmation Required

**How does this floor plan rate?**  
Take a look: **100** = Standard new home\* **130** = Typical resale home\*\*  
The lower the number, the better! Refer to the RESNET® HERS index brochure or go to [www.RESNET.us](http://www.RESNET.us) for details.

**What's a HERS® Index?** HERS stands for Home Energy Rating System, a system created by RESNET® to measure home energy efficiency.<sup>^</sup>  
A Projected HERS index or rating is a computer simulation performed prior to construction by a third-party HERS rater using RESNET-accredited rating software, rated feature and specification data derived from home plans, features and specifications, and other data selected or assumed by the rater. The projected HERS index is approximate and is subject to change without notice. Actual results will vary.

\*This information is presented for education purposes only. The HERS index for a confirmed rating will be determined by a third-party HERS rater based on data gathered from on-site observations and, if required, testing of rated features for a home as featured, optioned, located, oriented and/or built.  
+Standard new home is based on the RESNET® Reference Home deTUCSONition with a HERS® index of 100 (based on the 2006 International Energy Conservation Code).  
++Typical resale home is based on the U.S. Department of Energy deTUCSONition with a HERS® index of 130.

<sup>^</sup>RESNET® has developed the HERS® index to indicate the comparative efficiencies of homes. It is no guarantee that energy efficiencies will be achieved.