

Bishops Meadow
WALTER

Approx. square feet: 2,700
Stories: 2
Bedrooms: 4 - 5

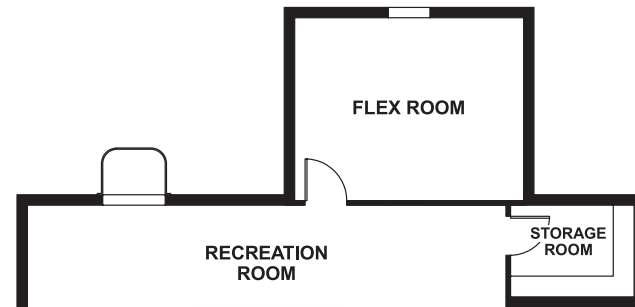
Garage: 2-car
Plan Number: M266

Bishops Meadow
WALTER

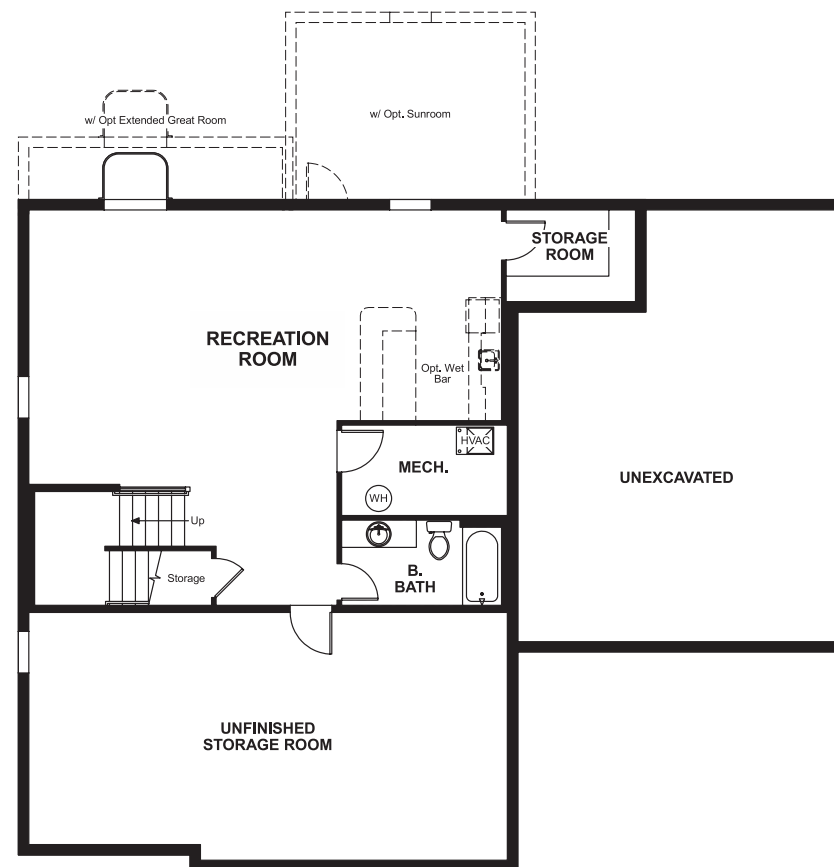
Approx. square feet: 2,700
Stories: 2
Bedrooms: 4 - 5
Garage: 2-car
Plan Number: M266

The Walter offers an open floorplan with plenty of room for entertaining, options include finished basement with rec room, fifth bedroom, study, deluxe master bath and gourmet kitchen. Large master bedroom with 2 walk-in closets. 3 additional bedrooms all have walk-in closets. There is a formal living room and formal dining space right off the kitchen.

Floor Plan
Basement



**OPT. FLEX ROOM AT OPT. SUNROOM
W/ OPT. FINISHED BASEMENT**



OPT. BEDROOM 5

OPT. FINISHED BASEMENT



Elevation A

Available elevations:



Elevation A



Elevation B



Elevation C



Elevation D

COMMUNITY LOCATION

9600 Wickstead Court
Perry Hall, MD 21128
410-312-2829



COMMUNITY LOCATION

9600 Wickstead Court
Perry Hall, MD 21128
410-312-2829

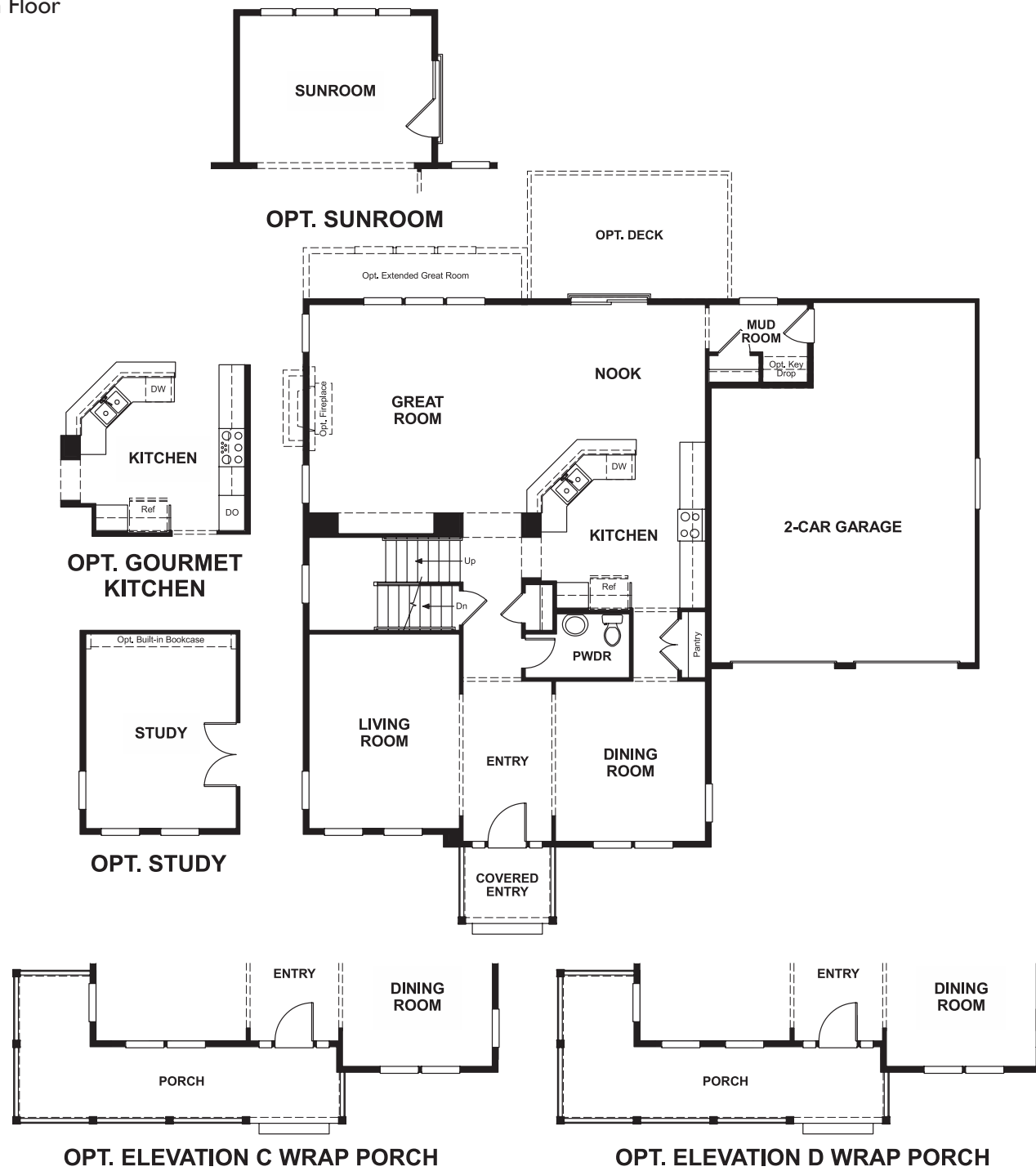


Bishops Meadow
WALTER

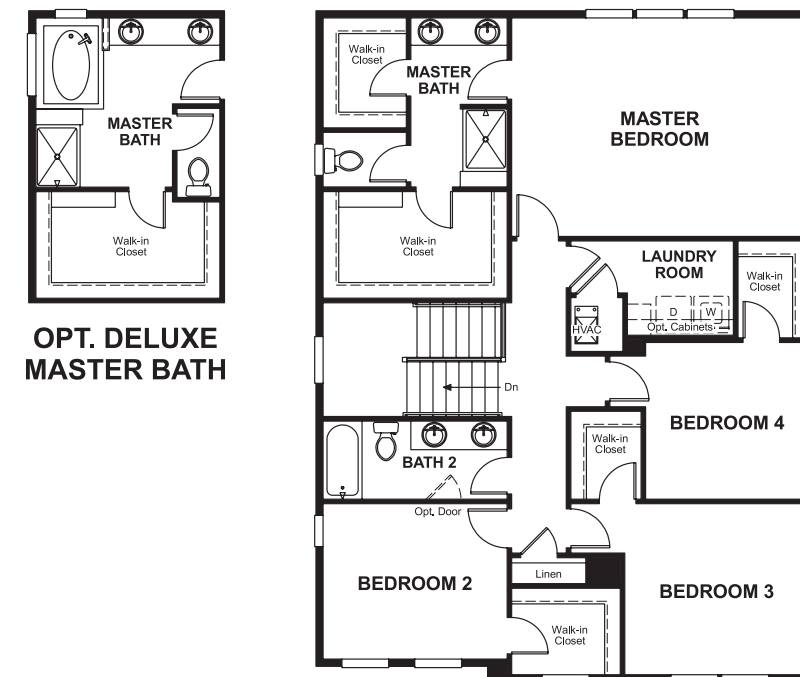
Approx. square feet: 2,700
Stories: 2
Bedrooms: 4 - 5

Garage: 2-car
Plan Number: M266

Floor Plan
Main Floor



Floor Plan
Second Floor



THIS PLAN'S PROJECTED
HERS® INDEX = 57*
Projected Rating Based on Plans – Field Confirmation Required

How does this floor plan rate?
Take a look: **100** = Standard new home* **130** = Typical resale home**
The lower the number, the better! Refer to the RESNET® HERS index brochure or go to www.RESNET.us for details.

What's a HERS® Index? HERS stands for Home Energy Rating System, a system created by RESNET® to measure home energy efficiency.[^]
A Projected HERS index or rating is a computer simulation performed prior to construction by a third-party HERS rater using RESNET-accredited rating software, rated feature and specification data derived from home plans, features and specifications, and other data selected or assumed by the rater. The projected HERS index is approximate and is subject to change without notice. Actual results will vary.

*This information is presented for education purposes only. The HERS index for a confirmed rating will be determined by a third-party HERS rater based on data gathered from on-site observations and, if required, testing of rated features for a home as featured, optioned, located, oriented and/or built.
+Standard new home is based on the RESNET® Reference Home definition with a HERS® index of 100 (based on the 2006 International Energy Conservation Code).
++Typical resale home is based on the U.S. Department of Energy definition with a HERS® index of 130.

[^]RESNET® has developed the HERS® index to indicate the comparative efficiencies of homes. It is no guarantee that energy efficiencies will be achieved.