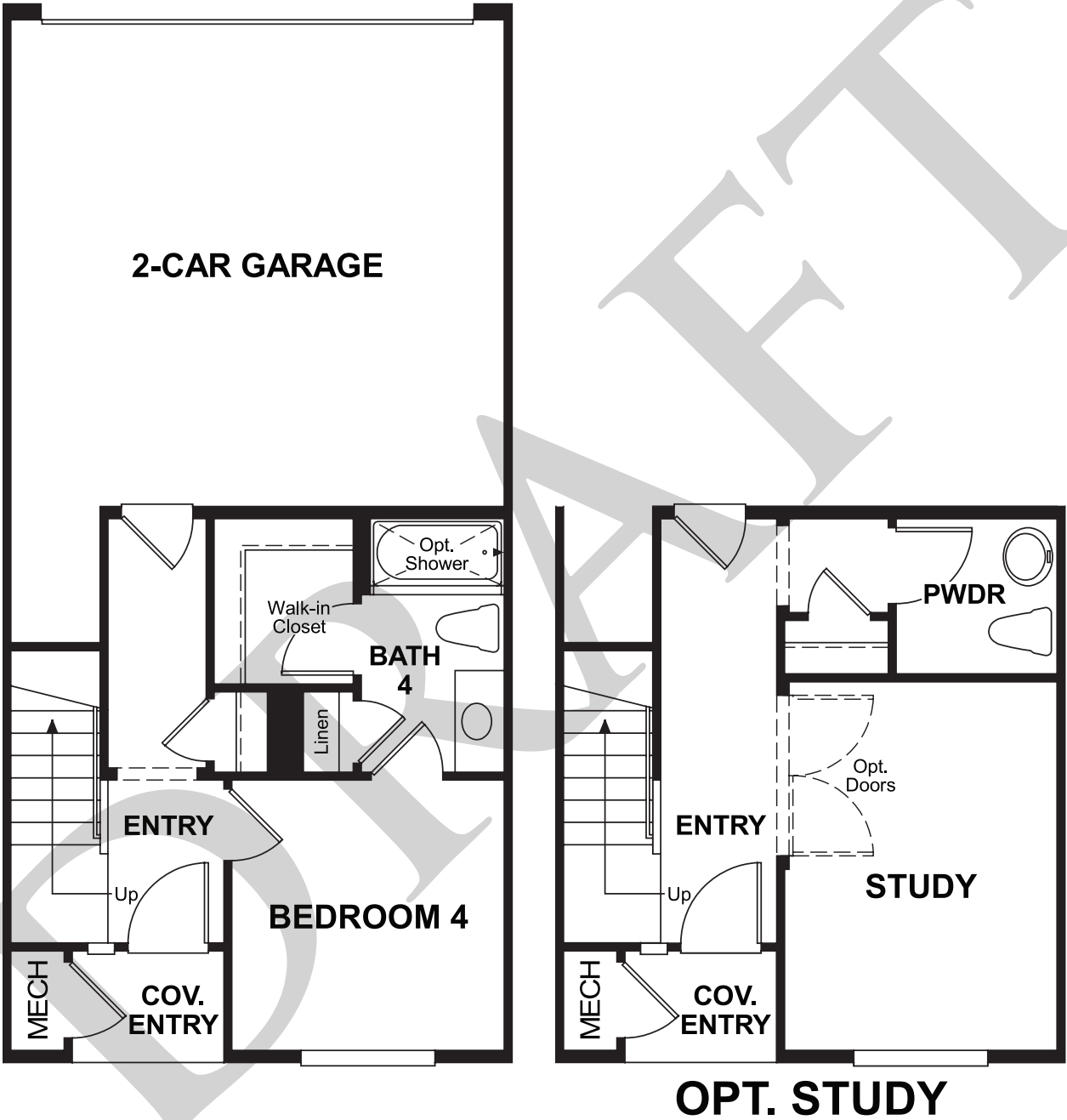


Walnut Village
WENDY

Approx. square feet: 1,800
Stories: 2
Bedrooms: 4
Garage: 2-car
Plan Number: S689

Walnut Village
WENDY

Floor Plan
Lower Floor



Elevation Building I

Available elevations:



Elevation Building I

Approx. square feet: 1,800
Stories: 2
Bedrooms: 4
Garage: 2-car
Plan Number: S689

The Wendy plan includes a convenient bedroom on the lower floor with a full bath and walk-in closet. Head up to the main floor to check out the relaxing balcony, lounge in the great room or entertain guests in the kitchen and adjacent dining room. The upstairs features two master suites with full bathrooms and walk-in closets. This floor plan also offers exciting personalization options, including a study and an optional great room.

COMMUNITY LOCATION
14834 West Nordhoff Street
Panorama City, CA 91402
818-895-4507

HOME GALLERY
5171 California Avenue
Irvine, CA 92617
800-852-9714



COMMUNITY LOCATION
14834 West Nordhoff Street
Panorama City, CA 91402
818-895-4507

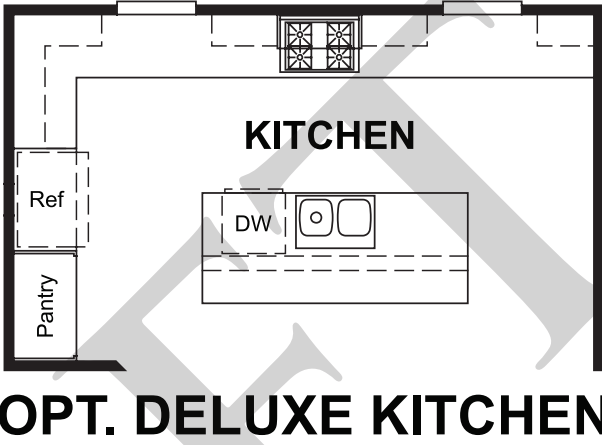
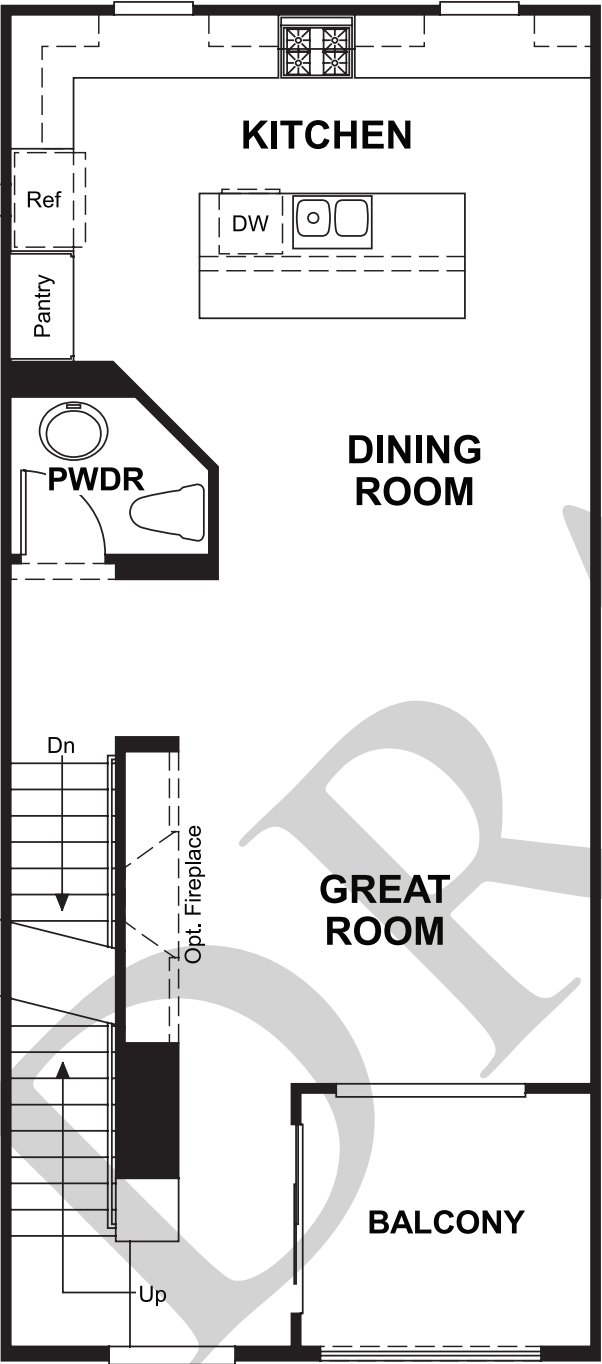
HOME GALLERY
5171 California Avenue
Irvine, CA 92617
800-852-9714



Walnut Village
WENDY

Approx. square feet: 1,800
Stories: 2
Bedrooms: 4
Garage: 2-car
Plan Number: S689

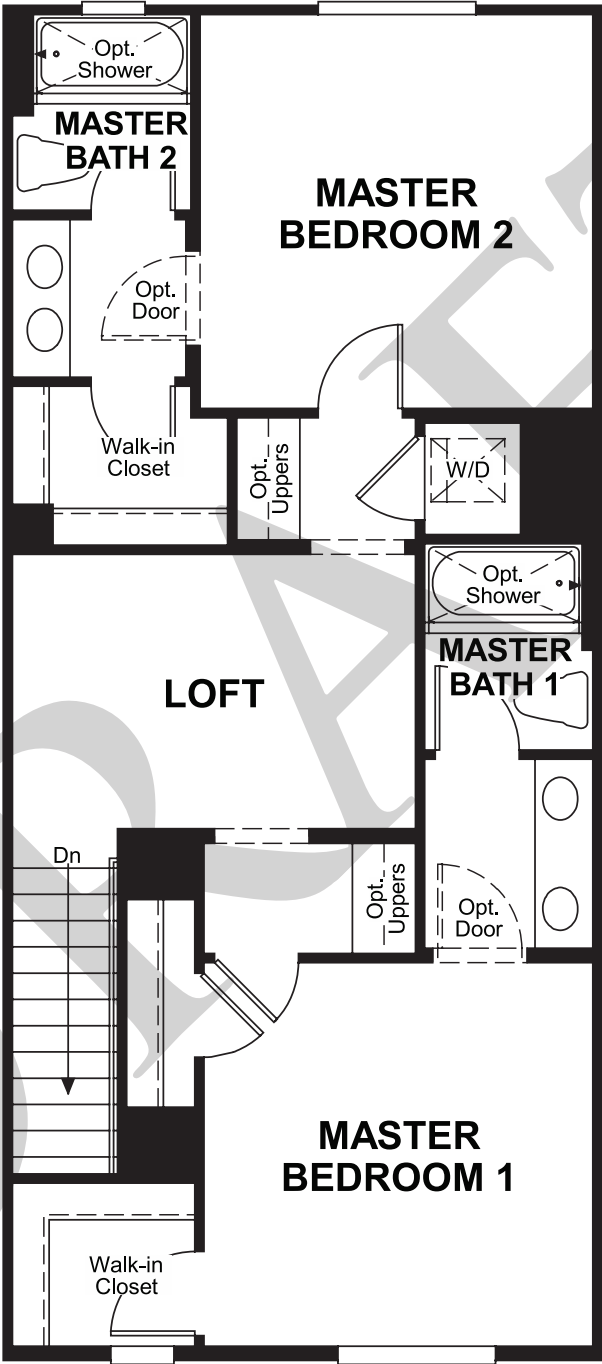
Floor Plan
Main Floor



**THIS PLAN'S PROJECTED
HERS® INDEX = 71 ***
Projected Rating Based on Plans – Field Confirmation Required

How does this floor plan rate?
Take a look: **100** = Standard new home* **130** = Typical resale home**
The lower the number, the better! Refer to the RESNET® HERS index brochure or go to www.RESNET.us for details.

Floor Plan
Second Floor



What's a HERS® Index? HERS stands for Home Energy Rating System, a system created by RESNET® to measure home energy efficiency.^
A Projected HERS index or rating is a computer simulation performed prior to construction by a third-party HERS rater using RESNET-accredited rating software, rated feature and specification data derived from home plans, features and specifications, and other data selected or assumed by the rater. The projected HERS index is approximate and is subject to change without notice. Actual results will vary.

*This information is presented for education purposes only. The HERS index for a confirmed rating will be determined by a third-party HERS rater based on data gathered from on-site observations and, if required, testing of rated features for a home as featured, optioned, located, oriented and/or built.
+Standard new home is based on the RESNET® Reference Home definition with a HERS® index of 100 (based on the 2006 International Energy Conservation Code).
++Typical resale home is based on the U.S. Department of Energy definition with a HERS® index of 130.

^RESNET® has developed the HERS® index to indicate the comparative efficiencies of homes. It is no guarantee that energy efficiencies will be achieved.