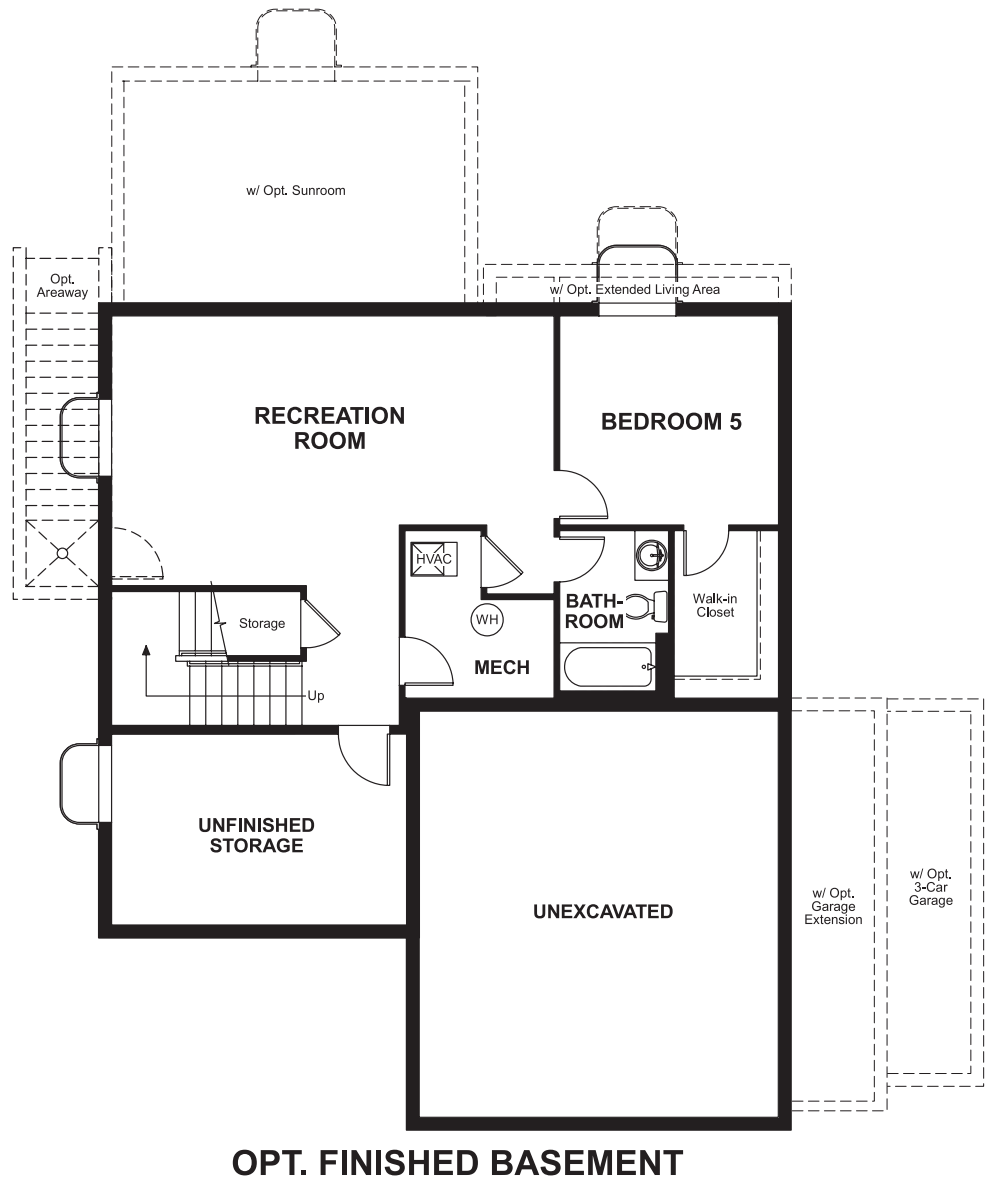


Acadia Park at Anthem
WHITMAN

Approx. square feet: 2,050
Stories: 2
Bedrooms: 3 - 5

Garage: 2- to 3-car
Plan Number: U200

Floor Plan
Basement



Acadia Park at Anthem
WHITMAN

Approx. square feet: 2,050
Stories: 2
Bedrooms: 3 - 5
Garage: 2- to 3-car
Plan Number: U200

The Whitman home creates a great first impression with a covered front porch. On the main level, you'll find flex spaces and an open kitchen with optional island and a walk-in pantry. Upstairs, there's a convenient laundry room and an expansive master suite. A 3-car garage and finished basement are optional.



Elevation G

Available elevations:



Elevation G



Elevation H



Elevation J



Elevation K



Elevation L

COMMUNITY LOCATION
5637 West Yukon Park Lane
Herriman, UT 84096
801-545-3429

HOME GALLERY
849 West Levoy Drive, Suite 108
Salt Lake City, UT 84123
801-545-3435

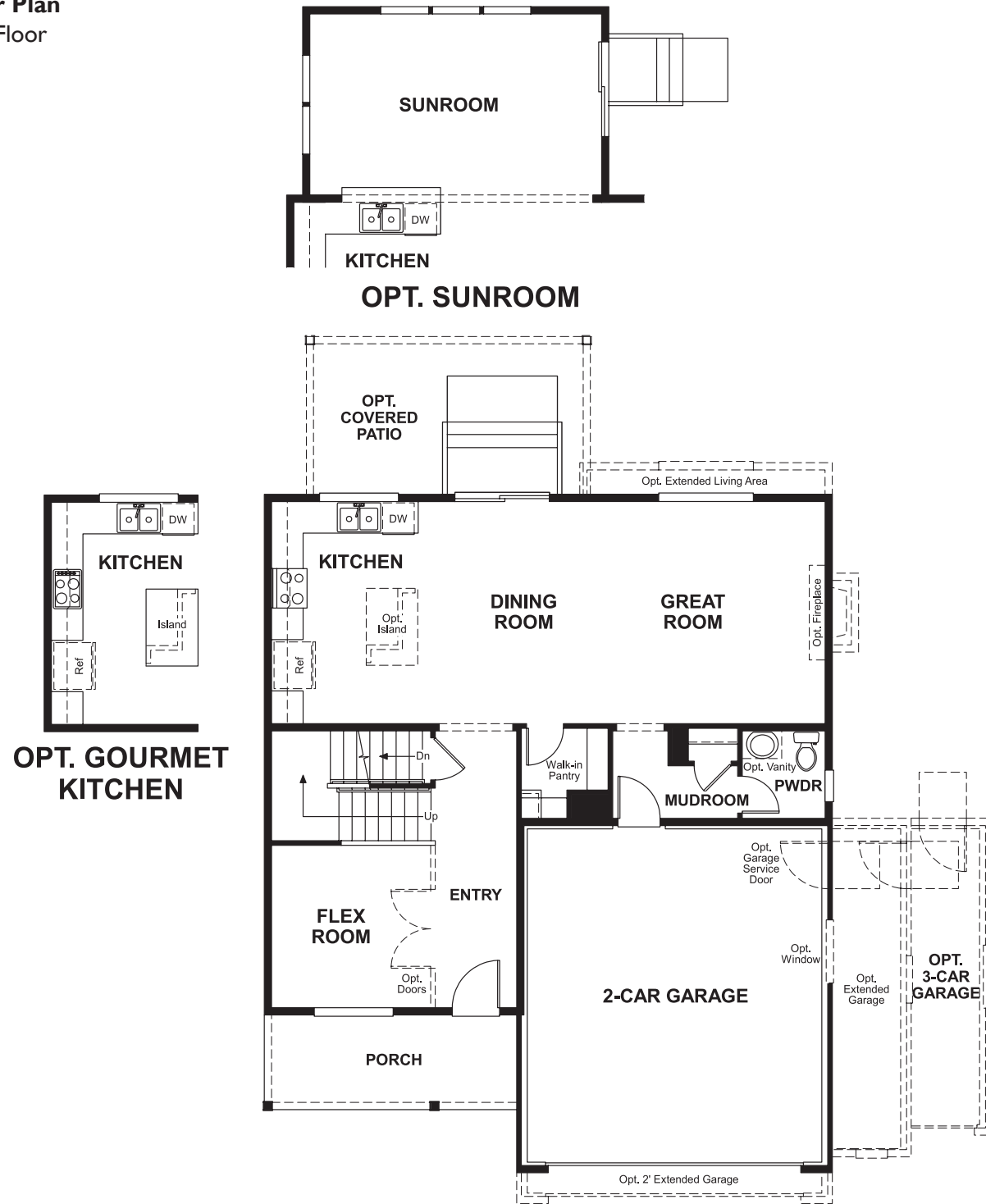


COMMUNITY LOCATION
5637 West Yukon Park Lane
Herriman, UT 84096
801-545-3429

HOME GALLERY
849 West Levoy Drive, Suite 108
Salt Lake City, UT 84123
801-545-3435



Floor Plan
First Floor



Floor Plan
Second Floor



**THIS PLAN'S PROJECTED
HERS® INDEX = 59***
Projected Rating Based on Plans – Field Confirmation Required

How does this floor plan rate?
Take a look: **100** = Standard new home* **130** = Typical resale home**
The lower the number, the better! Refer to the RESNET® HERS index brochure or go to www.RESNET.us for details.

What's a HERS® Index? HERS stands for Home Energy Rating System, a system created by RESNET® to measure home energy efficiency.[^]
A Projected HERS index or rating is a computer simulation performed prior to construction by a third-party HERS rater using RESNET-accredited rating software, rated feature and specification data derived from home plans, features and specifications, and other data selected or assumed by the rater. The projected HERS index is approximate and is subject to change without notice. Actual results will vary.

*This information is presented for education purposes only. The HERS index for a confirmed rating will be determined by a third-party HERS rater based on data gathered from on-site observations and, if required, testing of rated features for a home as featured, optioned, located, oriented and/or built.
+Standard new home is based on the RESNET® Reference Home definition with a HERS® index of 100 (based on the 2006 International Energy Conservation Code).
++Typical resale home is based on the U.S. Department of Energy definition with a HERS® index of 130.

[^]RESNET® has developed the HERS® index to indicate the comparative efficiencies of homes. It is no guarantee that energy efficiencies will be achieved.