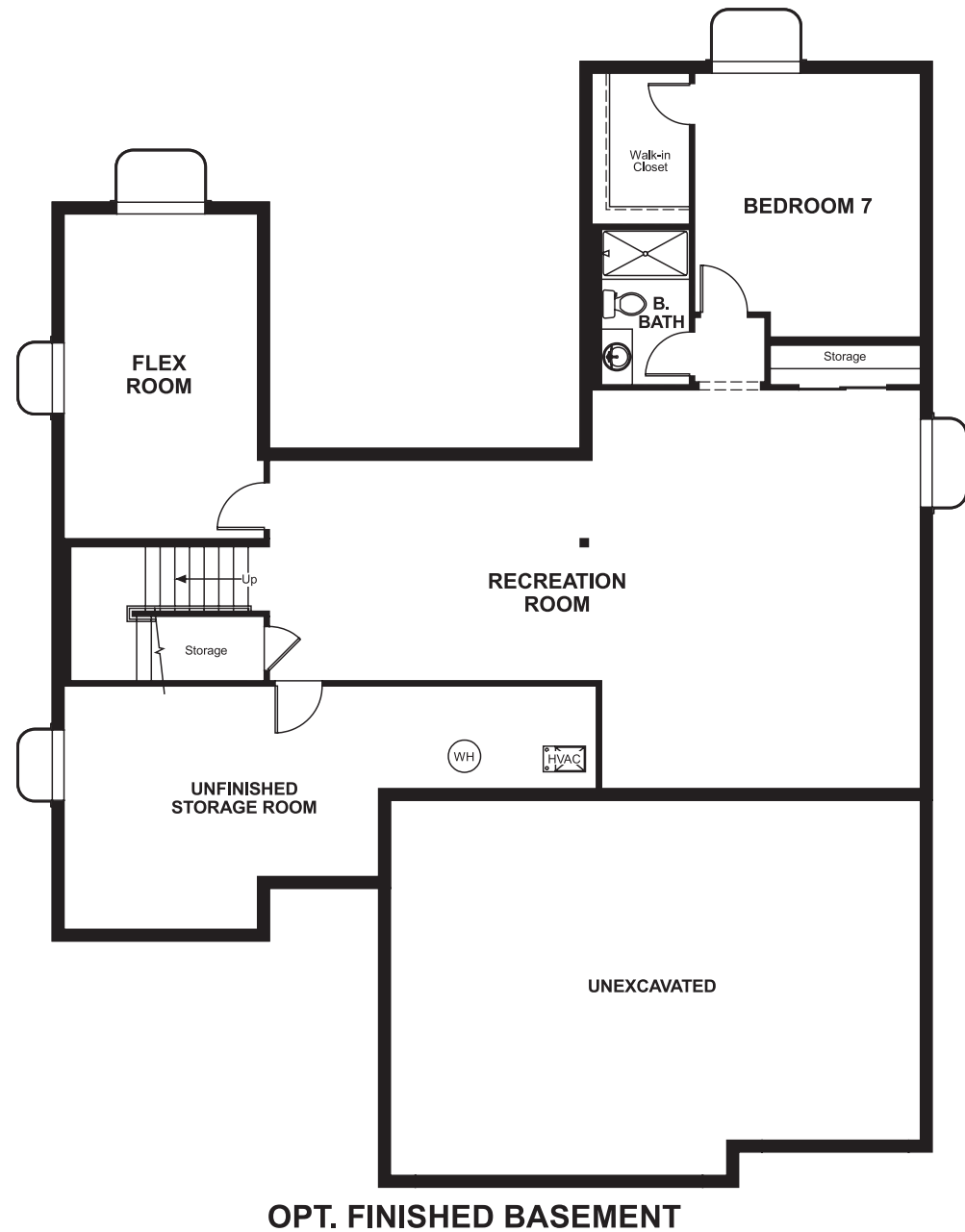


Gambel Oak  
**ZEPHYR**

**Approx. square feet:** 3,900  
**Stories:** 2  
**Bedrooms:** 5 - 7

**Garage:** 3-car  
**Plan Number:** D382

**Floor Plan**  
Basement



**OPT. FINISHED BASEMENT**

**COMMUNITY LOCATION**  
Low Meadow Boulevard & Treetop Drive  
Castle Rock, CO 80109  
303-660-0950

**HOME GALLERY**  
8000 East Bellview Avenue, Suite B-90  
Greenwood Village, CO 80111  
888-402-4663



Gambel Oak  
**ZEPHYR**

**Approx. square feet:** 3,900  
**Stories:** 2  
**Bedrooms:** 5 - 7  
**Garage:** 3-car  
**Plan Number:** D382

Spacious and inviting, with options for up to seven bedrooms, the Zephyr plan features a private study, a formal dining room, an open great room with optional fireplace and a charming kitchen with walk-in pantry and optional gourmet features. Upstairs, a convenient laundry, a relaxing loft and a lavish master suite with optional deluxe bath add to the plan's livability.



**Elevation A**

**Available elevations:**



**Elevation A**



**Elevation B**



**Elevation C**

**COMMUNITY LOCATION**  
Low Meadow Boulevard & Treetop Drive  
Castle Rock, CO 80109  
303-660-0950

**HOME GALLERY**  
8000 East Bellview Avenue, Suite B-90  
Greenwood Village, CO 80111  
888-402-4663

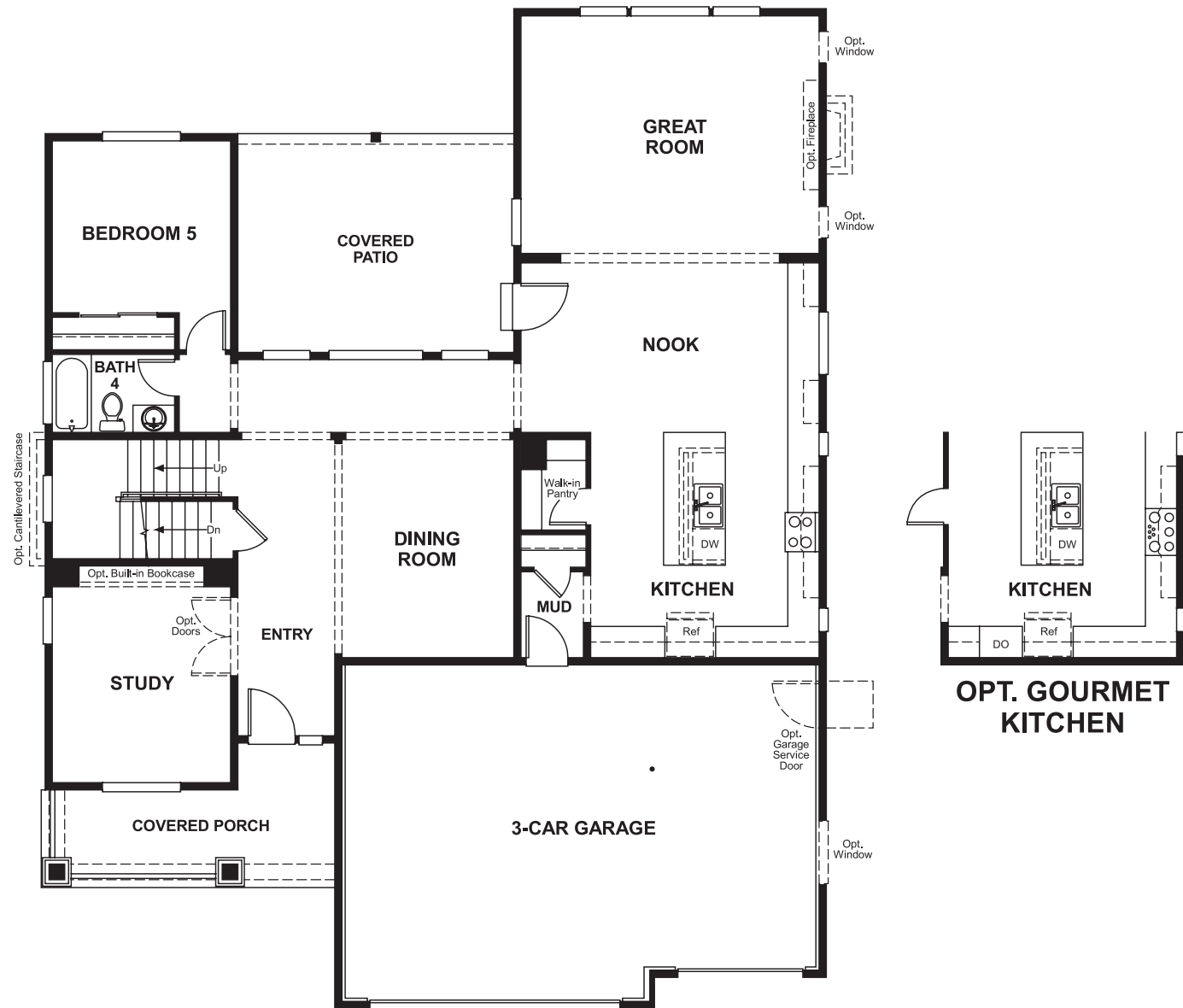


Gambel Oak  
**ZEPHYR**

Approx. square feet: 3,900  
Stories: 2  
Bedrooms: 5 - 7

Garage: 3-car  
Plan Number: D382

**Floor Plan**  
First Floor



**Floor Plan**  
Second Floor

