

Anthem Park
YORKTOWN

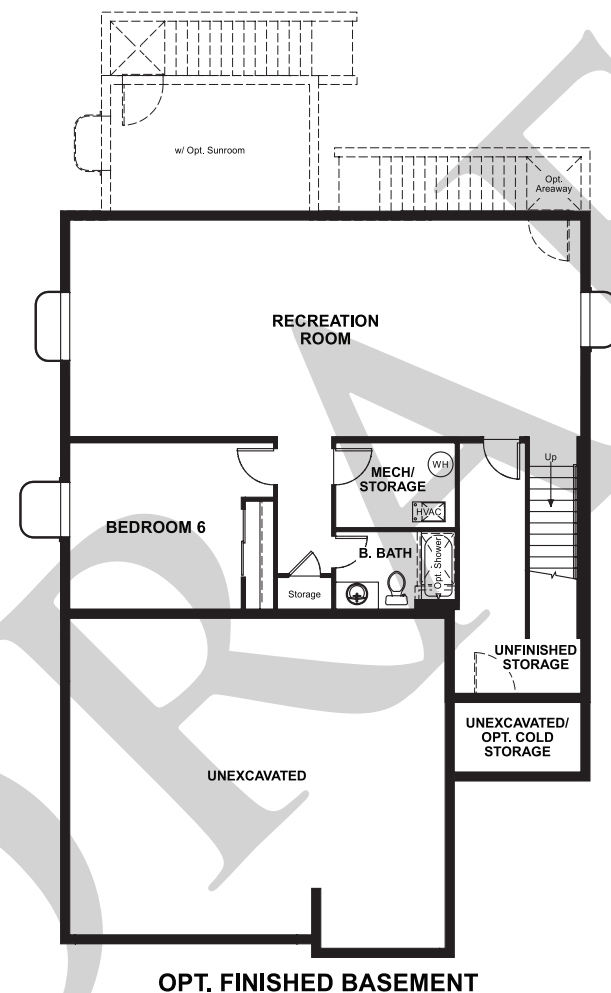
Approx. square feet: 2,900
Stories: 2
Bedrooms: 4 - 6
Garage: 3-car

Anthem Park
YORKTOWN

Approx. square feet: 2,900
Stories: 2
Bedrooms: 4 - 6
Garage: 3-car
Plan Number: U725

The Yorktown's main floor offers an expansive entertaining space at the back of the home: the great room with optional fireplace, dining room overlooking the backyard, and the kitchen with a large center island. The 3-car garage leads to a convenient mudroom with walk-in closet and optional key drop, a powder room and a private study. On the second floor, there's an immense loft surrounded by three bedrooms, a shared bath, a laundry room and a master suite with its own bath and spacious walk-in closet. Options include a sunroom, covered patio, fifth bedroom, deluxe bath.

Floor plan
Basement



Elevation A

Available elevation:



Elevation A



Elevation B



Elevation C



Elevation D



Elevation E



Elevation F

COMMUNITY LOCATION
5637 West Yukon Park Lane
Herriman, UT 84096
801-545-3429

HOME GALLERY
849 West Levoy Drive, Suite 108
Salt Lake City, UT 84123
801-545-3435



COMMUNITY LOCATION
5637 West Yukon Park Lane
Herriman, UT 84096
801-545-3429

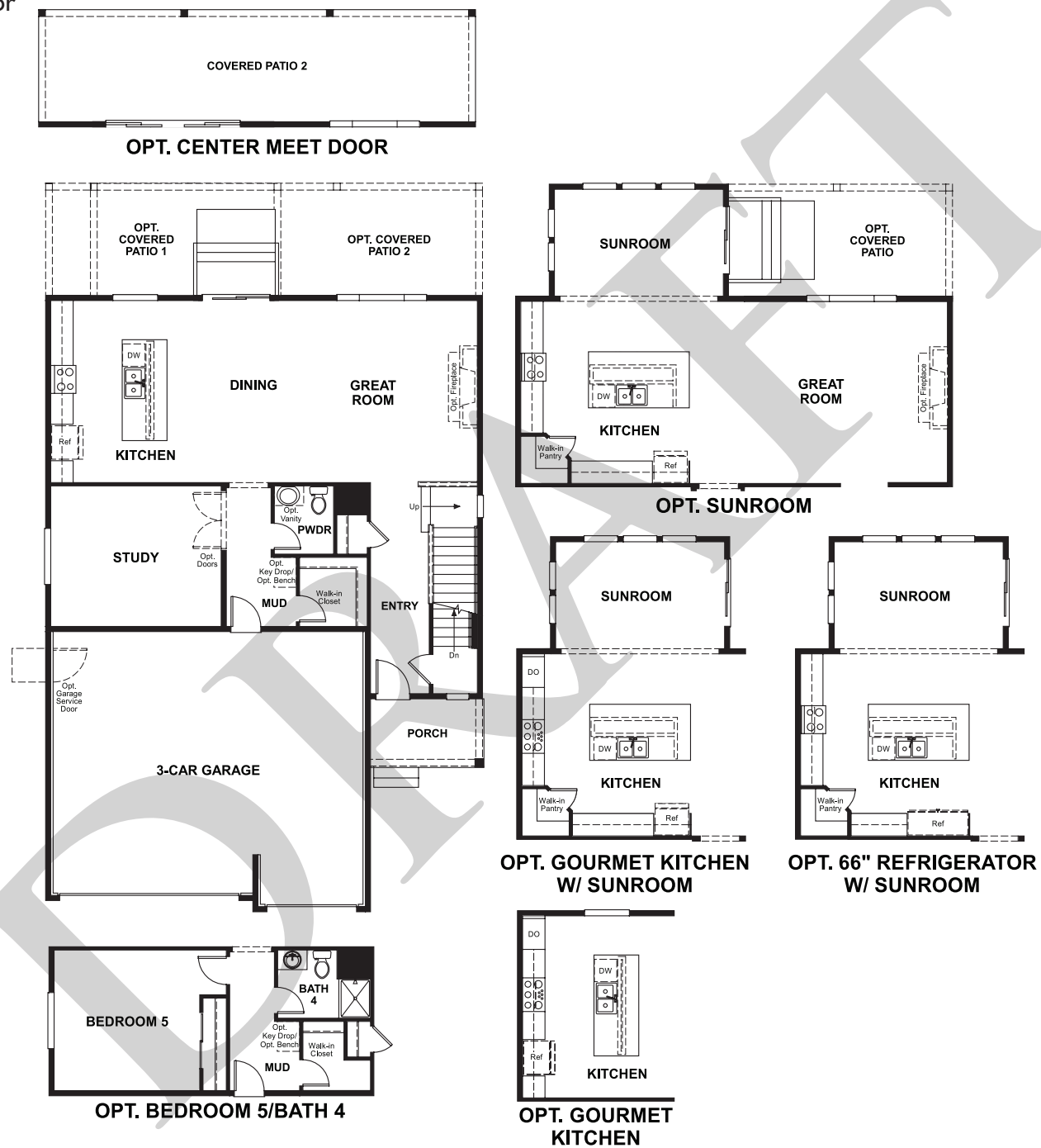
HOME GALLERY
849 West Levoy Drive, Suite 108
Salt Lake City, UT 84123
801-545-3435



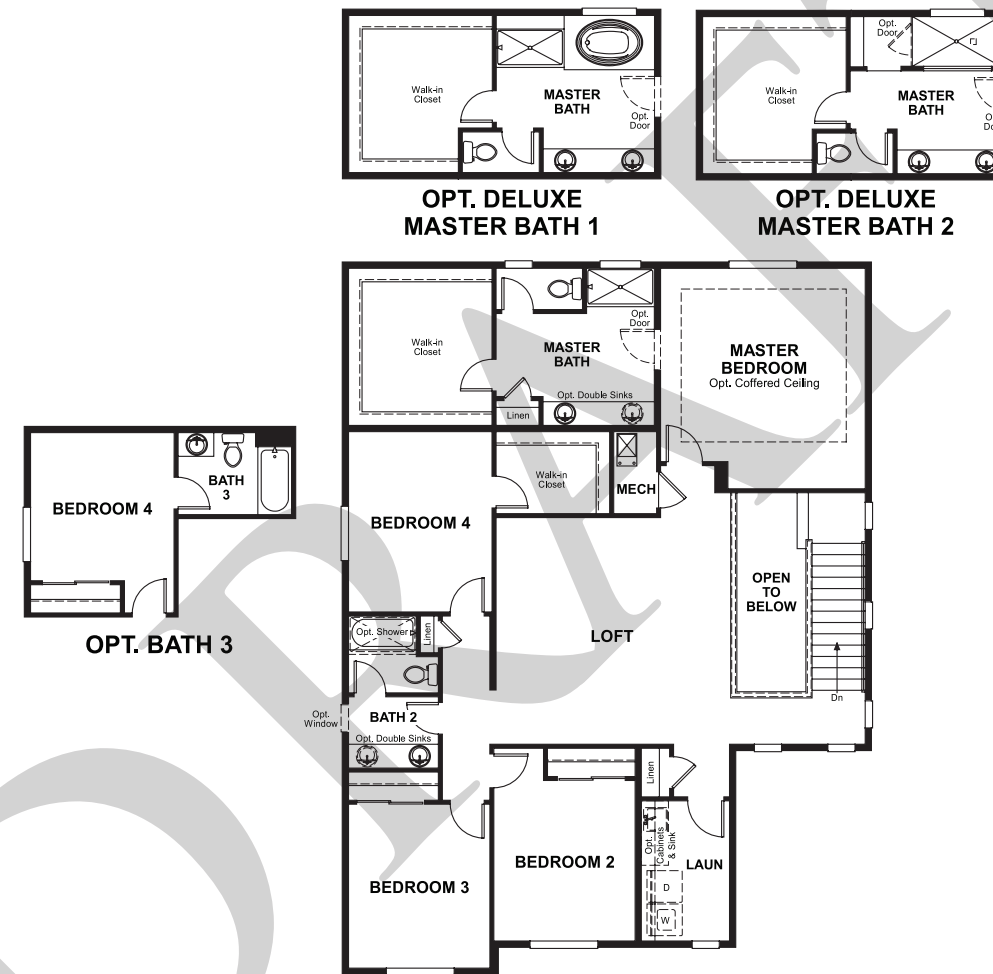
Anthem Park
YORKTOWN

Approx. square feet: 2,900 Bedrooms: 4 - 6
Stories: 2 Garage: 3-car

Floor plan
Main floor



Floor plan
Second floor



THIS PLAN'S PROJECTED HERS® INDEX = 58*
Projected Rating Based on Plans – Field Confirmation Required

How does this floor plan rate?
Take a look: 100 = Standard new home+ 130 = Typical resale home++
The lower the number, the better! Refer to the RESNET® HERS index brochure or go to www.RESNET.us for details.

What's a HERS® Index? HERS stands for Home Energy Rating System, a system created by RESNET® to measure home energy efficiency. A Projected HERS index or rating is a computer simulation performed prior to construction by a third-party HERS rater using RESNET-accredited rating software, rated feature and specification data derived from home plans, features and specifications, and other data selected or assumed by the rater. The projected HERS index is approximate and is subject to change without notice. Actual results will vary.

*This information is presented for education purposes only. The HERS index for a confirmed rating will be determined by a third-party HERS rater based on data gathered from on-site observations and, if required, testing of rated features for a home as featured, optioned, located, oriented and/or built.
+Standard new home is based on the RESNET® Reference Home definition with a HERS® index of 100 (based on the 2006 International Energy Conservation Code).
++Typical resale home is based on the U.S. Department of Energy definition with a HERS® index of 130.

^RESNET® has developed the HERS® index to indicate the comparative efficiencies of homes. It is no guarantee that energy efficiencies will be achieved.