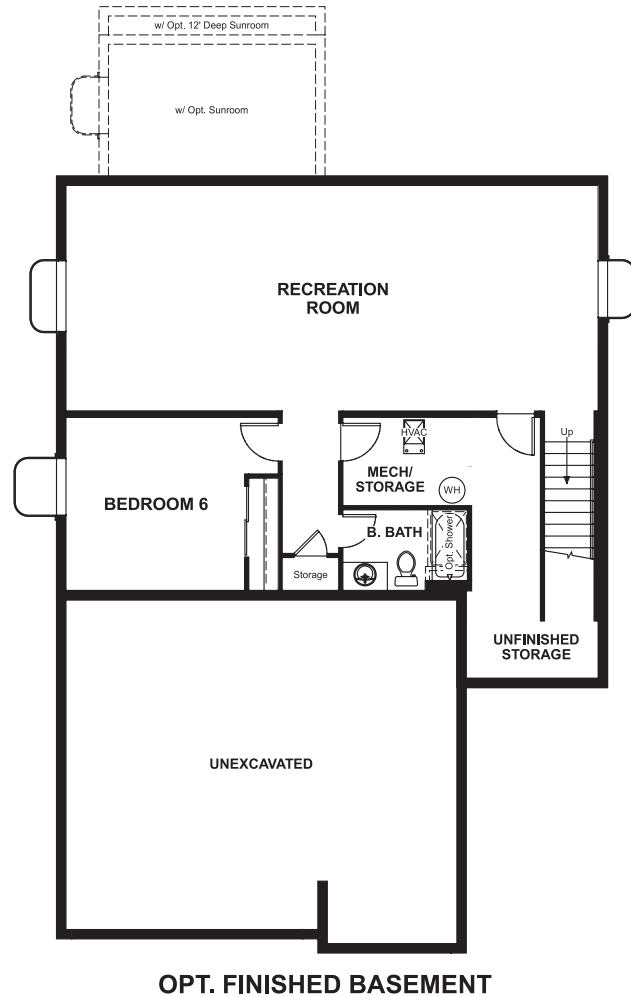


Copperleaf  
**YORKTOWN**

**Approx. square feet:** 2,900  
**Stories:** 2  
**Bedrooms:** 4 - 6

**Garage:** 2- to 3-car  
**Plan Number:** D725

**Floor Plan**  
Basement



**OPT. FINISHED BASEMENT**

Copperleaf  
**YORKTOWN**

**Approx. square feet:** 2,900  
**Stories:** 2  
**Bedrooms:** 4 - 6  
**Garage:** 2- to 3-car  
**Plan Number:** D725



**Elevation A**

The Yorktown's main floor offers an expansive entertaining space at the back of the home: the great room with optional fireplace, dining room overlooking the backyard, and the kitchen with a large center island. The 3-car garage leads to a convenient mudroom with walk-in closet, a powder room and a private study. On the second floor, there's an immense loft surrounded by three bedrooms, a shared bath, a laundry room and a master suite with its own bath and spacious walk-in closet. Options include a sunroom, covered patio, finished basement, bonus bedrooms and deluxe bath.

**Available elevations:**



**Elevation A**



**Elevation B**



**Elevation C**



**Elevation D**



**Elevation E**

**COMMUNITY LOCATION**  
22320 East Chenango Drive  
Aurora, CO 80015  
720-850-5750

**HOME GALLERY**  
8000 East Belleview Avenue, Suite C-12  
Greenwood Village, CO 80111  
888-402-4663



**COMMUNITY LOCATION**  
22320 East Chenango Drive  
Aurora, CO 80015  
720-850-5750

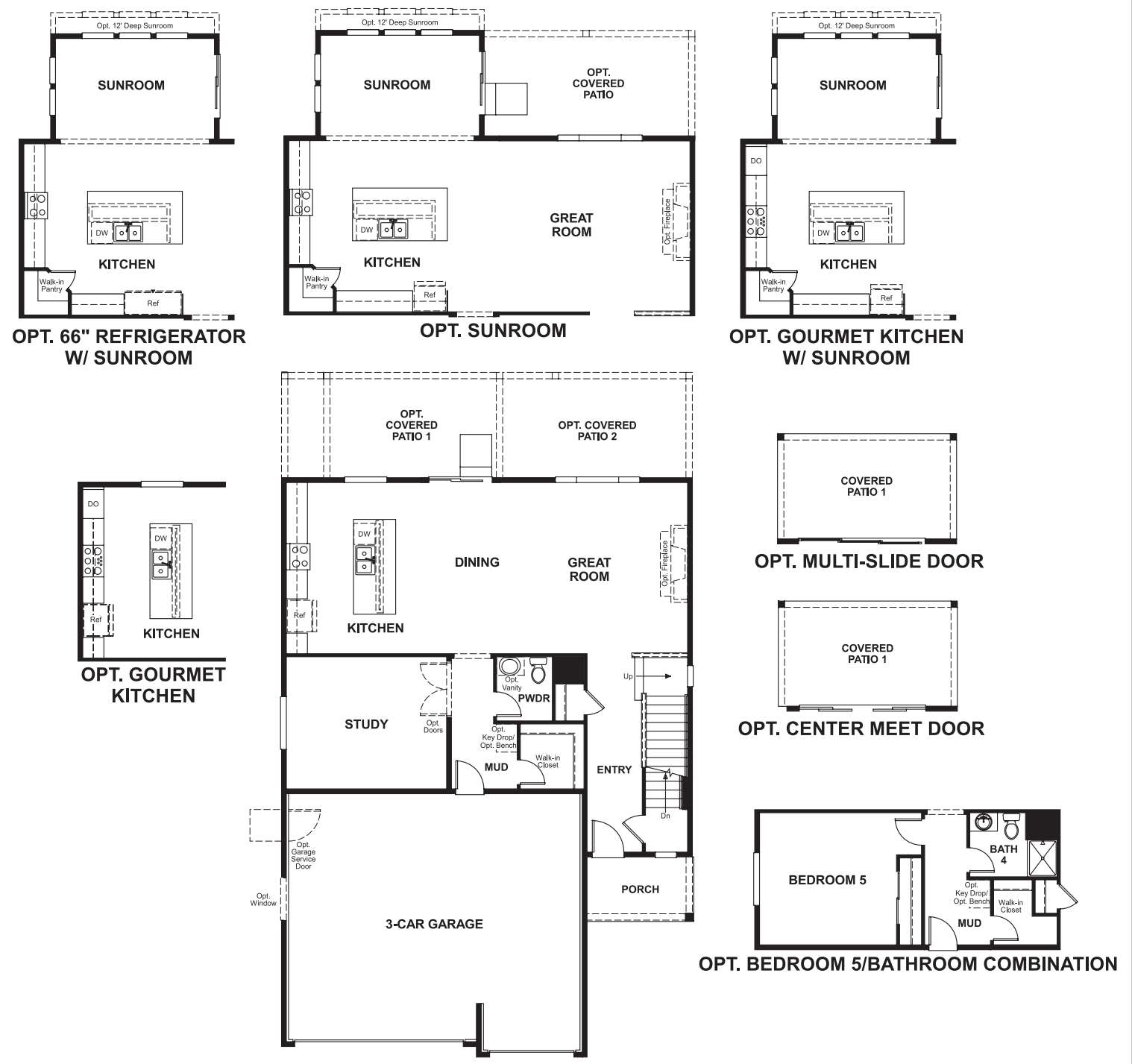
**HOME GALLERY**  
8000 East Belleview Avenue, Suite C-12  
Greenwood Village, CO 80111  
888-402-4663



Copperleaf  
**YORKTOWN**

**Approx. square feet:** 2,900  
**Stories:** 2  
**Bedrooms:** 4 - 6  
**Garage:** 2- to 3-car  
**Plan Number:** D725

**Floor Plan**  
Main Floor



**Floor Plan**  
Second Floor

