

Verona Estates
ZEPHYR



Elevation A

Approx. square feet: 3,800
Stories: 2
Bedrooms: 5-7
Garage: 3-car
Plan Number: L382

This exquisite plan offers a private study and a centralized dining room leading to the kitchen through a butler's pantry. A walk-in pantry, center island and nook complete the kitchen. A great room with optional fireplace and a fifth bedroom complete the main floor. Upstairs is a large master suite and a bonus room, which can be optioned into a bedroom with a loft or two bedrooms.

Available elevations:



Elevation A



Elevation B



Elevation C

COMMUNITY LOCATION

7360 Zonal Ave
 Las Vegas, NV 89131
 702-638-4440

HOME GALLERY

7770 South Dean Martin Drive, Suite 308
 Las Vegas, NV 89139
 702-617-8400



COMMUNITY LOCATION

7360 Zonal Ave
 Las Vegas, NV 89131
 702-638-4440

HOME GALLERY

7770 South Dean Martin Drive, Suite 308
 Las Vegas, NV 89139
 702-617-8400

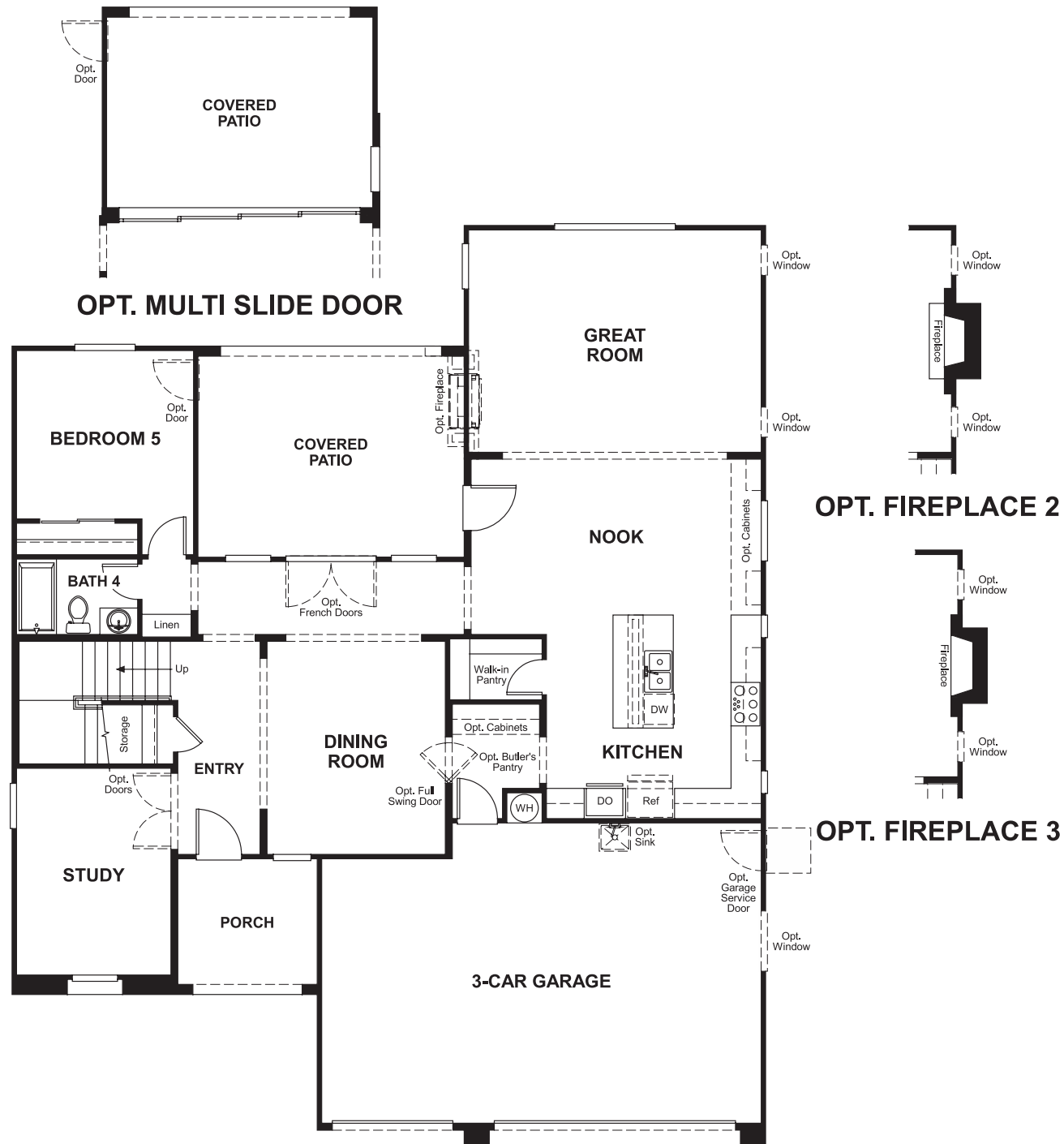


Verona Estates
ZEPHYR

Approx. square feet: 3,800
Stories: 2
Bedrooms: 5-7

Garage: 3-car
Plan Number: L382

Floor Plan
Main Floor



Floor Plan
Second Floor

