

Gold Ridge (Oliver Canyon)

ZEPHYR



Elevation A

Available elevations:



Elevation A



Elevation B



Elevation C

**Approx. square feet:** 3,850

**Stories:** 2

**Bedrooms:** 5 - 6

**Garage:** 3-car

**Plan Number:** N383

Top design features of the Zephyr plan include a quiet study, a formal dining room and a gourmet kitchen with a walk-in pantry, center island and adjacent great room with optional fireplace. Upstairs, you'll find a convenient laundry, a versatile loft and four spacious bedrooms, including the well-appointed master suite with deluxe bath.

COMMUNITY LOCATION

5290 Klingsell Place  
Fairfield, CA 94533  
707-416-0212

HOME GALLERY

5274 Klingsell Place  
Fairfield, CA 94533  
By Appointment Only



COMMUNITY LOCATION

5290 Klingsell Place  
Fairfield, CA 94533  
707-416-0212

HOME GALLERY

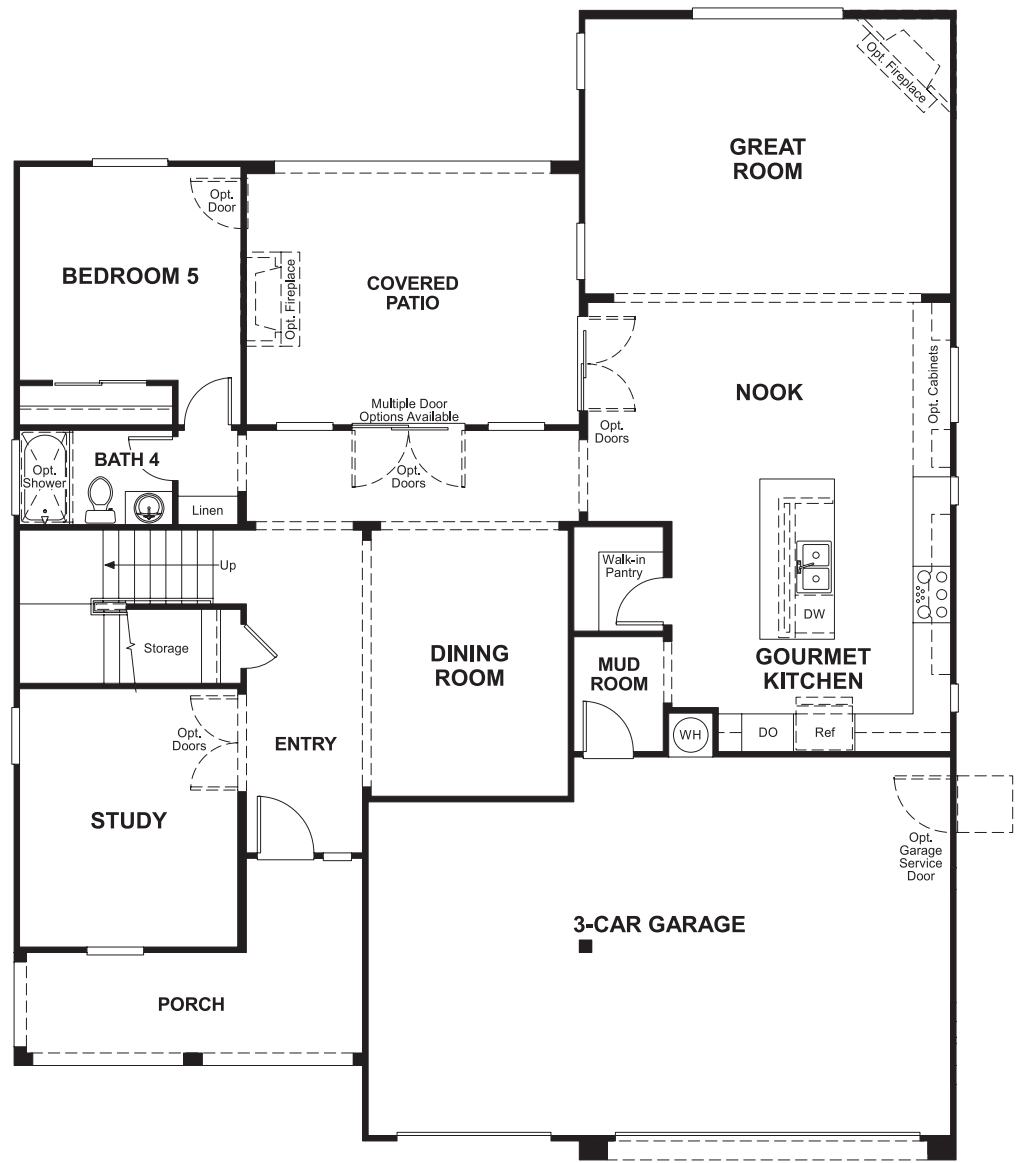
5274 Klingsell Place  
Fairfield, CA 94533  
By Appointment Only



Gold Ridge (Oliver Canyon)  
**ZEPHYR**

**Approx. square feet:** 3,850  
**Stories:** 2  
**Bedrooms:** 5 - 6  
**Garage:** 3-car  
**Plan Number:** N383

**Floor Plan**  
First Floor



**THIS PLAN'S PROJECTED  
HERS® INDEX = 74 \***  
Projected Rating Based on Plans – Field Confirmation Required

**How does this floor plan rate?**  
Take a look: **100** = Standard new home\* **130** = Typical resale home\*\*  
The lower the number, the better! Refer to the RESNET® HERS index brochure or go to **www.RESNET.us** for details.

**Floor Plan**  
Second Floor



**What's a HERS® Index?** HERS stands for Home Energy Rating System, a system created by RESNET® to measure home energy efficiency.^  
A Projected HERS index or rating is a computer simulation performed prior to construction by a third-party HERS rater using RESNET-accredited rating software, rated feature and specification data derived from home plans, features and specifications, and other data selected or assumed by the rater. The projected HERS index is approximate and is subject to change without notice. Actual results will vary.

\*This information is presented for education purposes only. The HERS index for a confirmed rating will be determined by a third-party HERS rater based on data gathered from on-site observations and, if required, testing of rated features for a home as featured, optioned, located, oriented and/or built.  
+Standard new home is based on the RESNET® Reference Home definition with a HERS® index of 100 (based on the 2006 International Energy Conservation Code).  
++Typical resale home is based on the U.S. Department of Energy definition with a HERS® index of 130.

^RESNET® has developed the HERS® index to indicate the comparative efficiencies of homes. It is no guarantee that energy efficiencies will be achieved.