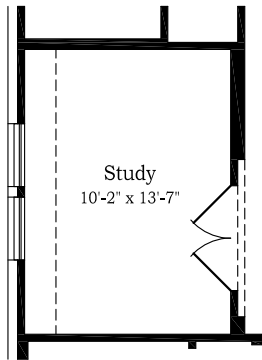




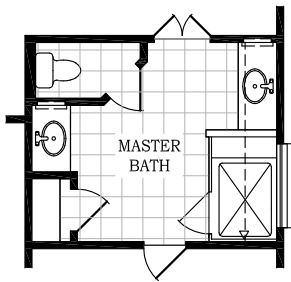
**CHESMAR
HOMES**

Setting a Higher Standard

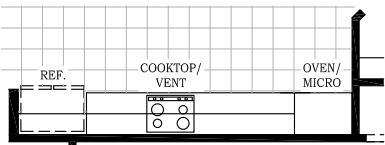
Plan 2090 • *Caldwell* • 2,090 sq. ft. - Indoor Living
146 sq. ft. - Outdoor Living



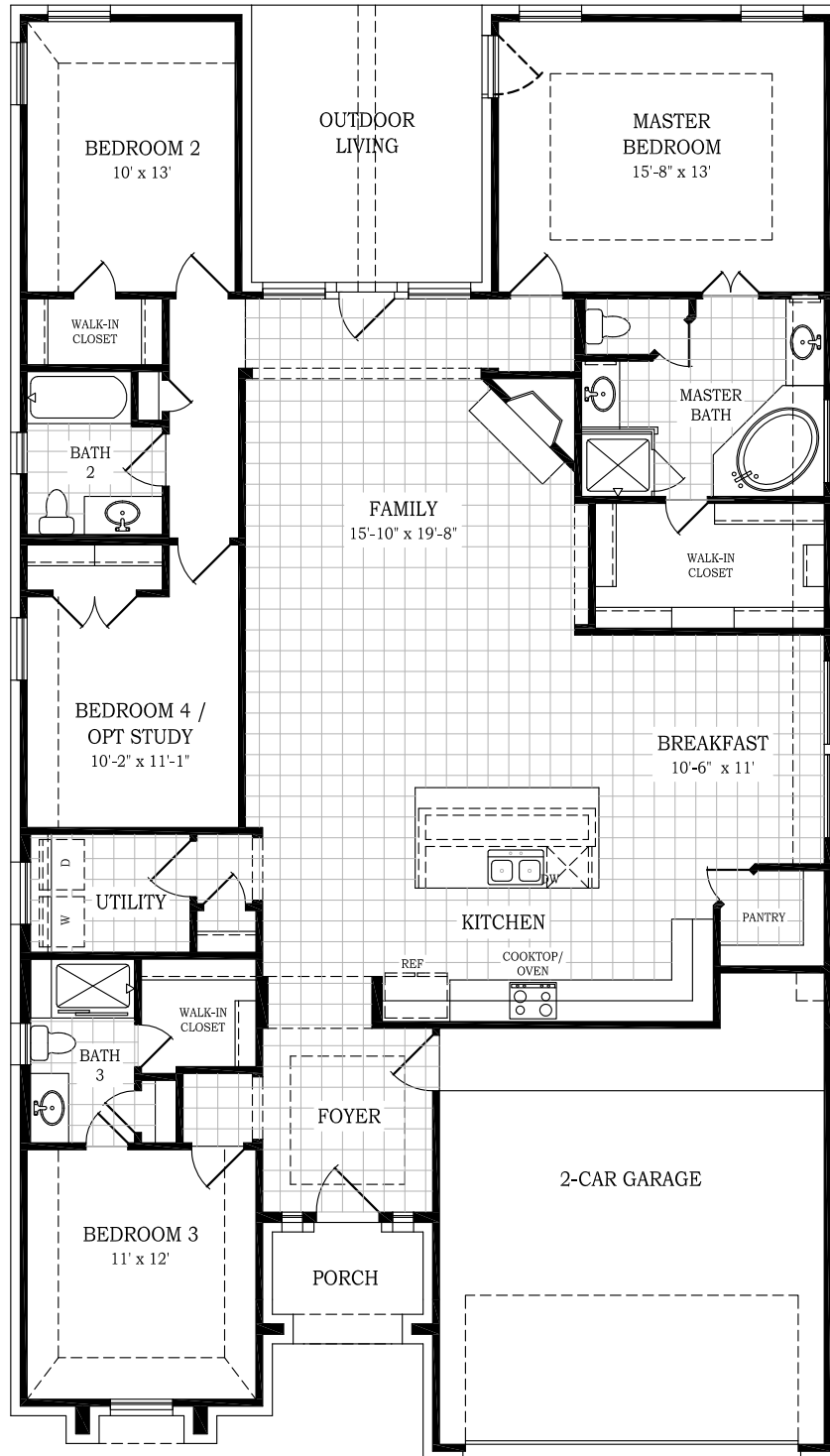
Opt. Study



Opt. Oversized Shower



Opt. Built-In Appliances



Square footage and room dimensions are approximate and may vary per elevation. Window placement, roof line and porches may also vary by elevation. Plans, features, prices and availability are subject to change without notice.

Print Date:12/18/20