



**CHESMAR
HOMES**

Setting a Higher Standard

chesmar.com

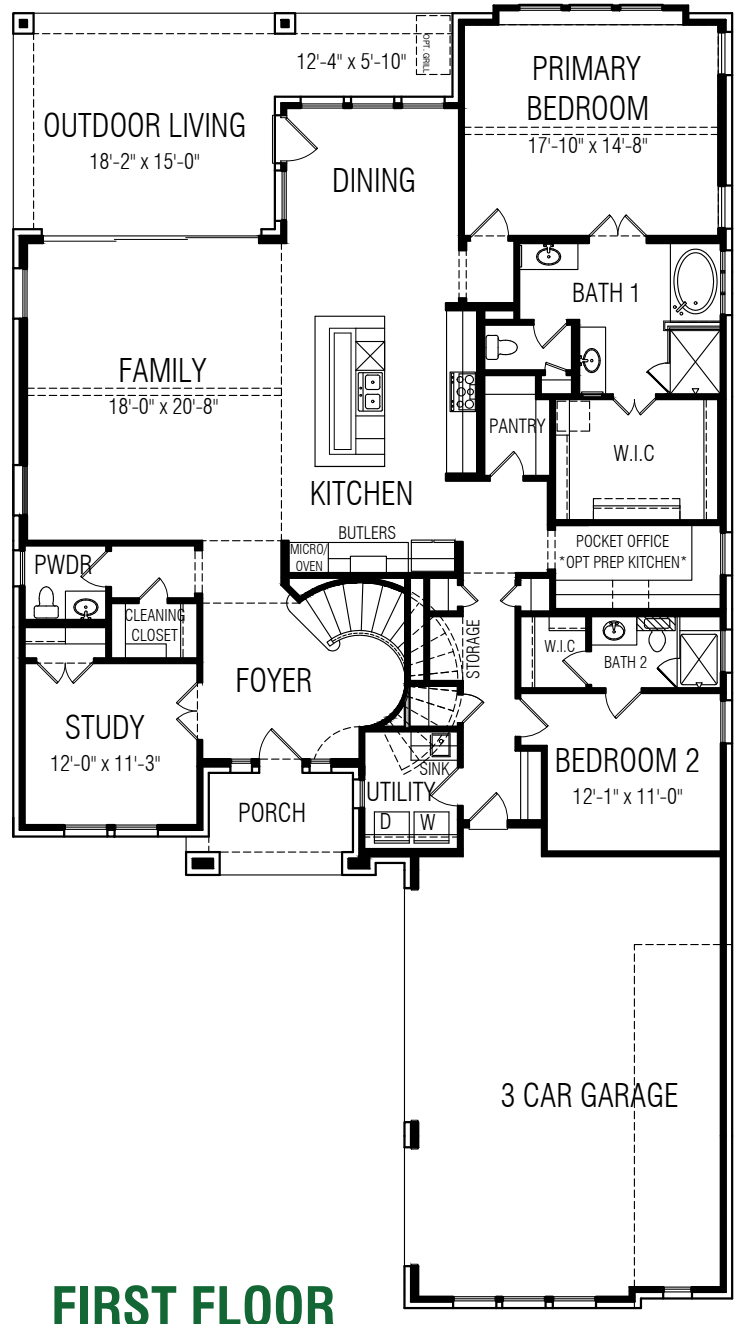
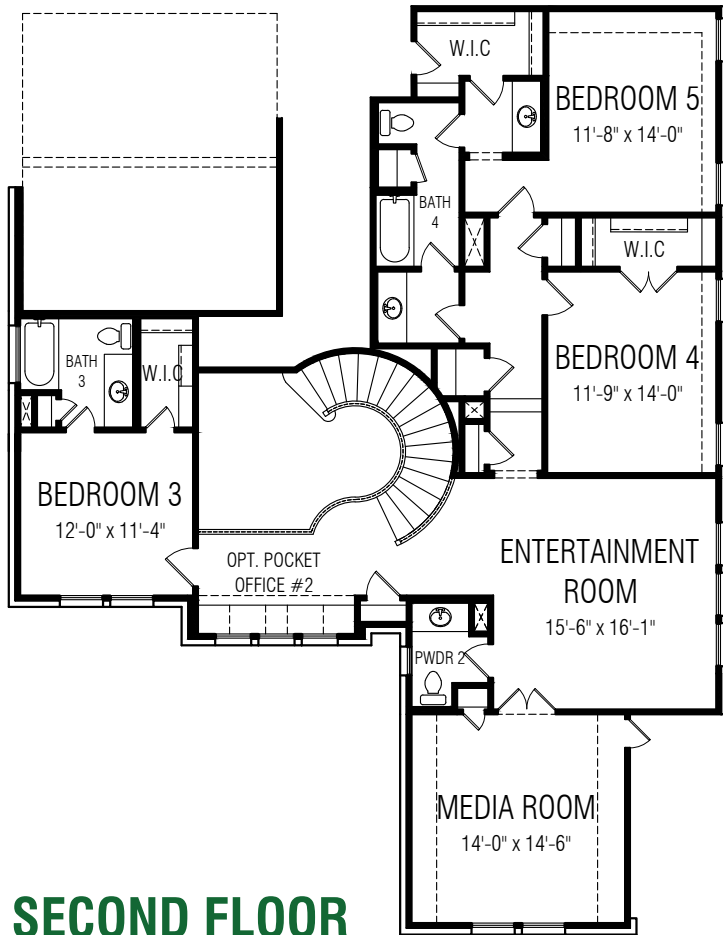
THE GROVE 65s

SARATOGA

plan 4241 approx. 4,241 sqft

THIS HOME FEATURES | OPTIONS

- | | |
|------------------------|---------------------------|
| 5 Bedroom | 6 Bedroom |
| 4.1 Baths | Outdoor Gas Fireplace |
| 344 sf. Outdoor Living | Indoor Gas Fireplace |
| Sliding Glass Door #1 | Sliding Glass Door #2, #3 |
| Study | Prep Kitchen |
| Entertainment room | Wine room |
| Media Room | Pocket Office #2 |
| Pocket Office | |



REVISED - 03-2025. Square footage and room dimensions are approximate and may vary per elevation. Window placement, roof line and porches may also vary by elevation. Plans, features, prices and availability are subject to change without notice.



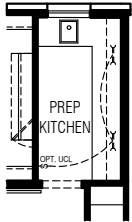
Setting a Higher Standard

chesmar.com

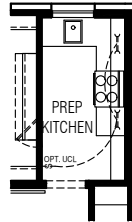
THE GROVE 65s

SARATOGA

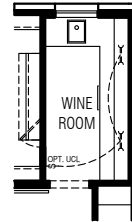
plan 4241 approx. 4,241 sqft



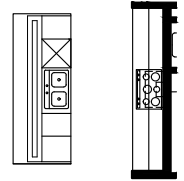
OPT. PREP KITCHEN
ILO POCKET OFFICE



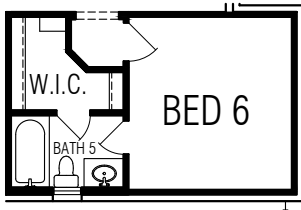
OPT. FULL PREP
ILO POCKET OFFICE



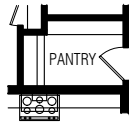
OPT. WINE ROOM
ILO POCKET OFFICE



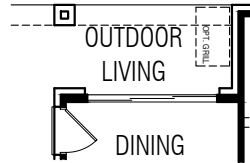
OPT. WATERFALL COUNTERTOP
@ ISLAND



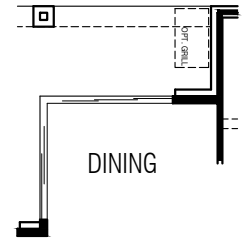
OPT. BEDROOM 6
ILO STUDY



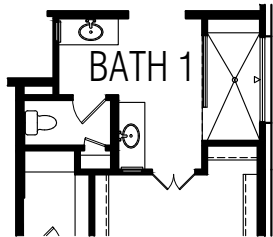
OPT. 18" CABINET
@ PANTRY



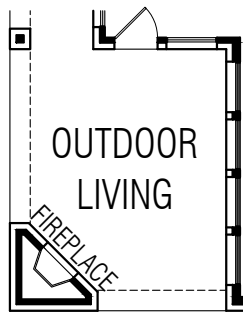
OPT. SLIDING GLASS DOOR #2
@ DINING



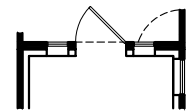
OPT. SLIDING GLASS DOOR #3
@ DINING



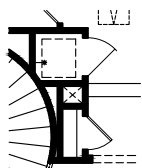
OPT. OVERSIZED SHOWER
@ BATH 1



OPT. GAS FIREPLACE
@ OUTDOOR LIVING



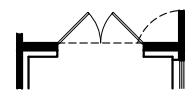
OPT. 42" FRONT DOOR
@ FOYER



OPT. 2-N-1 WASHER
@ HALL UPSTAIRS



OPT. GAS FIREPLACE
@ FAMILY ROOM



OPT. DOUBLE DOOR
@ FOYER

REVISED - 03-2025. Square footage and room dimensions are approximate and may vary per elevation. Window placement, roof line and porches may also vary by elevation. Plans, features, prices and availability are subject to change without notice.